

## Excellent Integrated System Limited

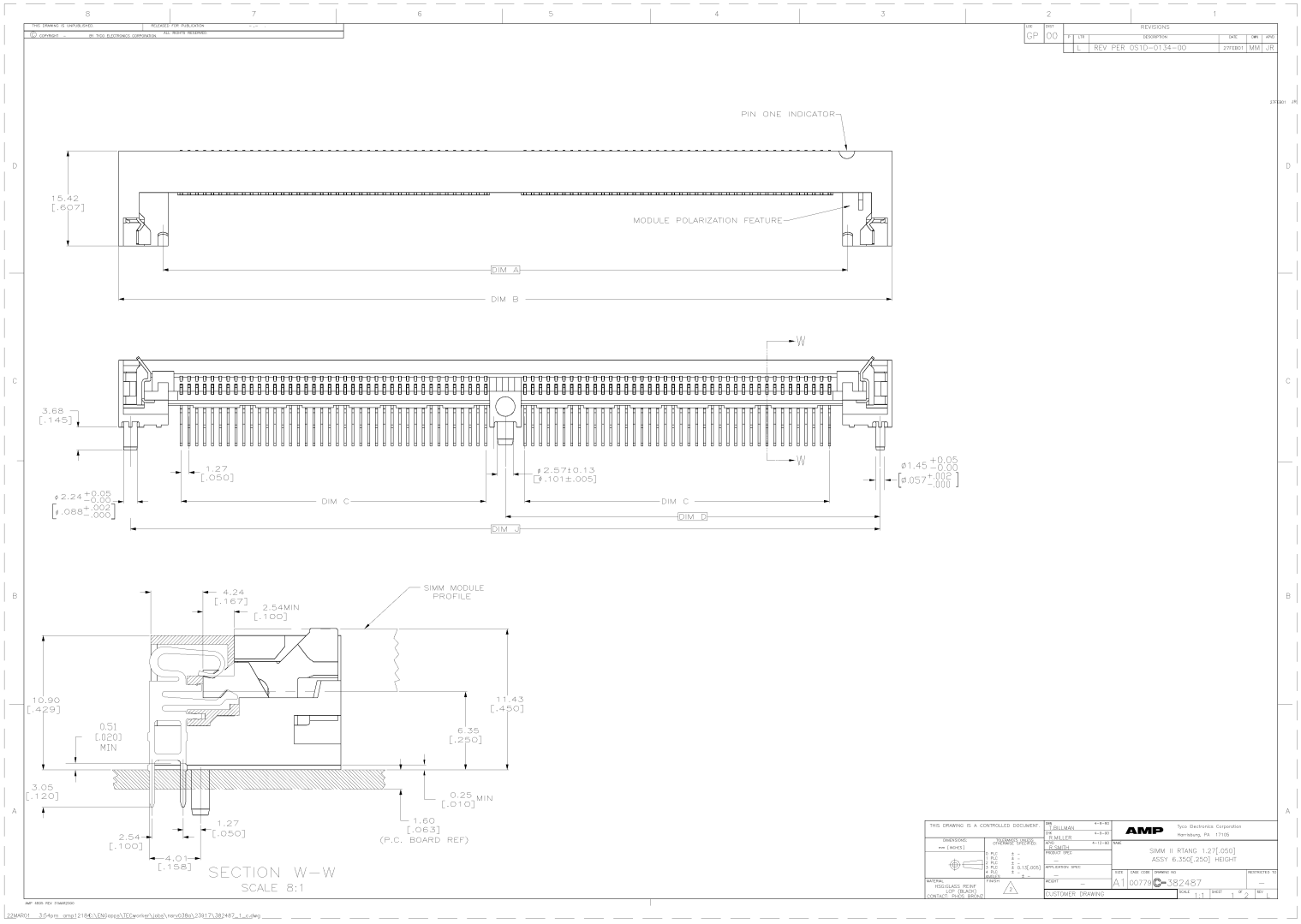
Stocking Distributor

Click to view price, real time Inventory, Delivery & Lifecycle Information:

[TE Connectivity AMP Connectors](#)  
[7-382487-2](#)

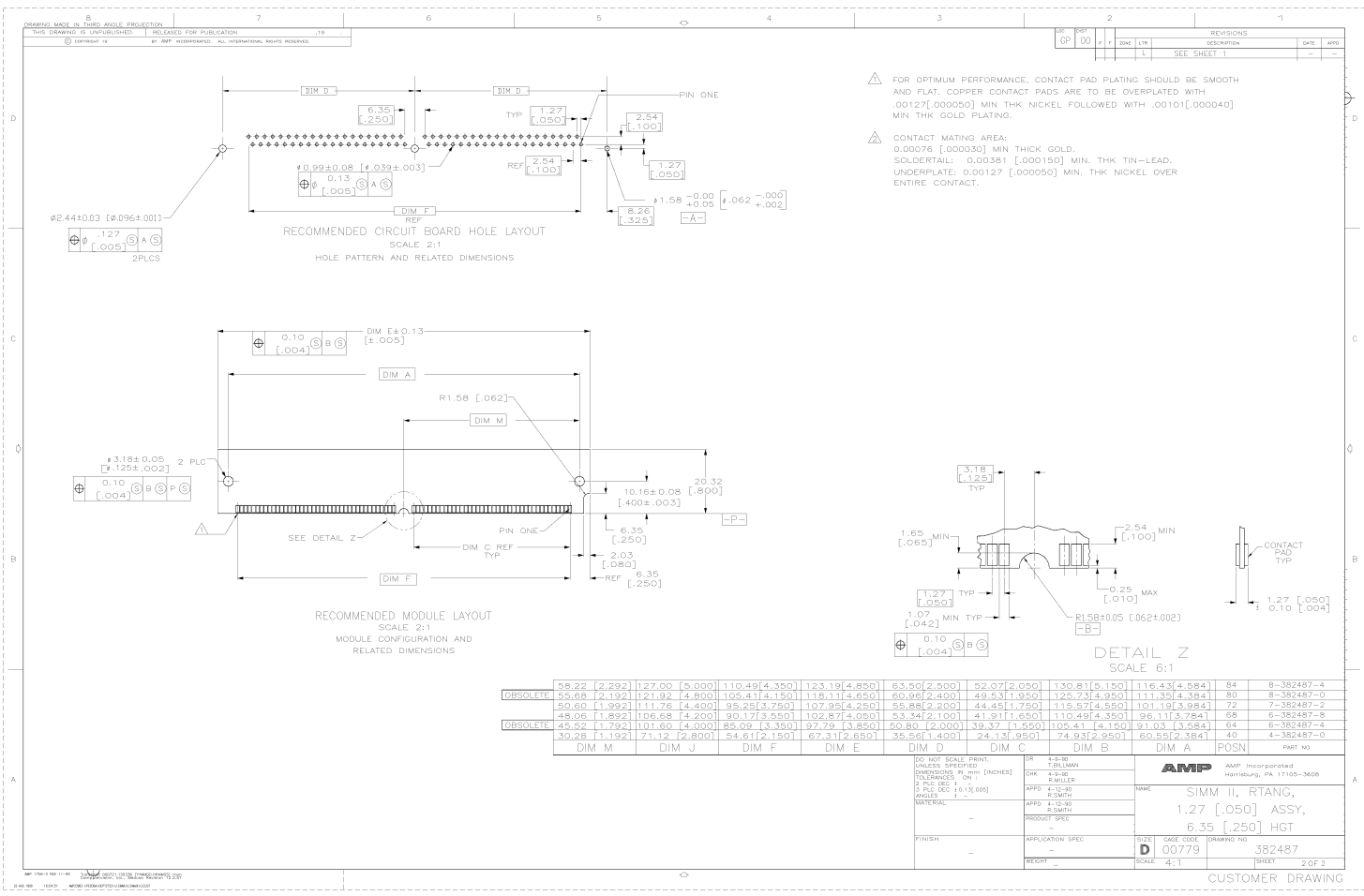
For any questions, you can email us directly:

[sales@integrated-circuit.com](mailto:sales@integrated-circuit.com)



THIS DRAWING IS A CONTROLLED DOCUMENT		REV	DATE	BY	CHKD
REV 00		1	01/11/00	MM	MM
REV 01		2	01/11/00	MM	MM
REV 02		3	01/11/00	MM	MM
REV 03		4	01/11/00	MM	MM
REV 04		5	01/11/00	MM	MM
REV 05		6	01/11/00	MM	MM
REV 06		7	01/11/00	MM	MM
REV 07		8	01/11/00	MM	MM
REV 08		9	01/11/00	MM	MM
REV 09		10	01/11/00	MM	MM
REV 10		11	01/11/00	MM	MM
REV 11		12	01/11/00	MM	MM
REV 12		13	01/11/00	MM	MM
REV 13		14	01/11/00	MM	MM
REV 14		15	01/11/00	MM	MM
REV 15		16	01/11/00	MM	MM
REV 16		17	01/11/00	MM	MM
REV 17		18	01/11/00	MM	MM
REV 18		19	01/11/00	MM	MM
REV 19		20	01/11/00	MM	MM
REV 20		21	01/11/00	MM	MM
REV 21		22	01/11/00	MM	MM
REV 22		23	01/11/00	MM	MM
REV 23		24	01/11/00	MM	MM
REV 24		25	01/11/00	MM	MM
REV 25		26	01/11/00	MM	MM
REV 26		27	01/11/00	MM	MM
REV 27		28	01/11/00	MM	MM
REV 28		29	01/11/00	MM	MM
REV 29		30	01/11/00	MM	MM
REV 30		31	01/11/00	MM	MM
REV 31		32	01/11/00	MM	MM
REV 32		33	01/11/00	MM	MM
REV 33		34	01/11/00	MM	MM
REV 34		35	01/11/00	MM	MM
REV 35		36	01/11/00	MM	MM
REV 36		37	01/11/00	MM	MM
REV 37		38	01/11/00	MM	MM
REV 38		39	01/11/00	MM	MM
REV 39		40	01/11/00	MM	MM
REV 40		41	01/11/00	MM	MM
REV 41		42	01/11/00	MM	MM
REV 42		43	01/11/00	MM	MM
REV 43		44	01/11/00	MM	MM
REV 44		45	01/11/00	MM	MM
REV 45		46	01/11/00	MM	MM
REV 46		47	01/11/00	MM	MM
REV 47		48	01/11/00	MM	MM
REV 48		49	01/11/00	MM	MM
REV 49		50	01/11/00	MM	MM
REV 50		51	01/11/00	MM	MM
REV 51		52	01/11/00	MM	MM
REV 52		53	01/11/00	MM	MM
REV 53		54	01/11/00	MM	MM
REV 54		55	01/11/00	MM	MM
REV 55		56	01/11/00	MM	MM
REV 56		57	01/11/00	MM	MM
REV 57		58	01/11/00	MM	MM
REV 58		59	01/11/00	MM	MM
REV 59		60	01/11/00	MM	MM
REV 60		61	01/11/00	MM	MM
REV 61		62	01/11/00	MM	MM
REV 62		63	01/11/00	MM	MM
REV 63		64	01/11/00	MM	MM
REV 64		65	01/11/00	MM	MM
REV 65		66	01/11/00	MM	MM
REV 66		67	01/11/00	MM	MM
REV 67		68	01/11/00	MM	MM
REV 68		69	01/11/00	MM	MM
REV 69		70	01/11/00	MM	MM
REV 70		71	01/11/00	MM	MM
REV 71		72	01/11/00	MM	MM
REV 72		73	01/11/00	MM	MM
REV 73		74	01/11/00	MM	MM
REV 74		75	01/11/00	MM	MM
REV 75		76	01/11/00	MM	MM
REV 76		77	01/11/00	MM	MM
REV 77		78	01/11/00	MM	MM
REV 78		79	01/11/00	MM	MM
REV 79		80	01/11/00	MM	MM
REV 80		81	01/11/00	MM	MM
REV 81		82	01/11/00	MM	MM
REV 82		83	01/11/00	MM	MM
REV 83		84	01/11/00	MM	MM
REV 84		85	01/11/00	MM	MM
REV 85		86	01/11/00	MM	MM
REV 86		87	01/11/00	MM	MM
REV 87		88	01/11/00	MM	MM
REV 88		89	01/11/00	MM	MM
REV 89		90	01/11/00	MM	MM
REV 90		91	01/11/00	MM	MM
REV 91		92	01/11/00	MM	MM
REV 92		93	01/11/00	MM	MM
REV 93		94	01/11/00	MM	MM
REV 94		95	01/11/00	MM	MM
REV 95		96	01/11/00	MM	MM
REV 96		97	01/11/00	MM	MM
REV 97		98	01/11/00	MM	MM
REV 98		99	01/11/00	MM	MM
REV 99		100	01/11/00	MM	MM

AMP and the AMP logo are trademarks of AMP Technology Corporation. © AMP Technology Corporation 1999.



FOR OPTIMUM PERFORMANCE, CONTACT PAD PLATING SHOULD BE SMOOTH AND FLAT. COPPER CONTACT PADS ARE TO BE OVERPLATED WITH .0012 [.00005] MIN THK NICKEL FOLLOWED WITH .0010 [.00004] MIN THK GOLD PLATING.

CONTACT MATING AREA:  
0.0076 [.00030] MIN THICK GOLD.  
SOLDERTAIL: 0.00381 [.000150] MIN. THK TIN-LEAD.  
UNDERPLATE: 0.00127 [.000050] MIN. THK NICKEL OVER ENTIRE CONTACT.

REV	DATE	BY	CHK	APP	DESCRIPTION
00					SEE SHEET 1

DR	4-8-80	NAME	SIMM II, RTANG,
CHK	4-8-80	SIZE	1.27 [.050] ASSY,
	RILLER	SCALE	6.35 [.250] HGT
APPD	4-15-80	DATE CODE	00779
	ROSMITH	DRAWING NO	382487
PRODUCT SPEC		SHEET	2 OF 2
APPLICATION SPEC			
REGRHT			

CUSTOMER DRAWING