

## Excellent Integrated System Limited

Stocking Distributor

Click to view price, real time Inventory, Delivery & Lifecycle Information:

[TE Connectivity AMP Connectors](#)  
[553257-1](#)

For any questions, you can email us directly:

[sales@integrated-circuit.com](mailto:sales@integrated-circuit.com)



DRAWING MADE IN THIRD ANGLE PROJECTION  
© Copyright 1980 BY AMP INCORPORATED, HARRISBURG, PA.  
ALL INTERNATIONAL RIGHTS RESERVED. AMP INCORPORATED PRODUCTS  
COVERED BY U. S. AND FOREIGN PATENTS AND/OR PATENTS PENDING.

3

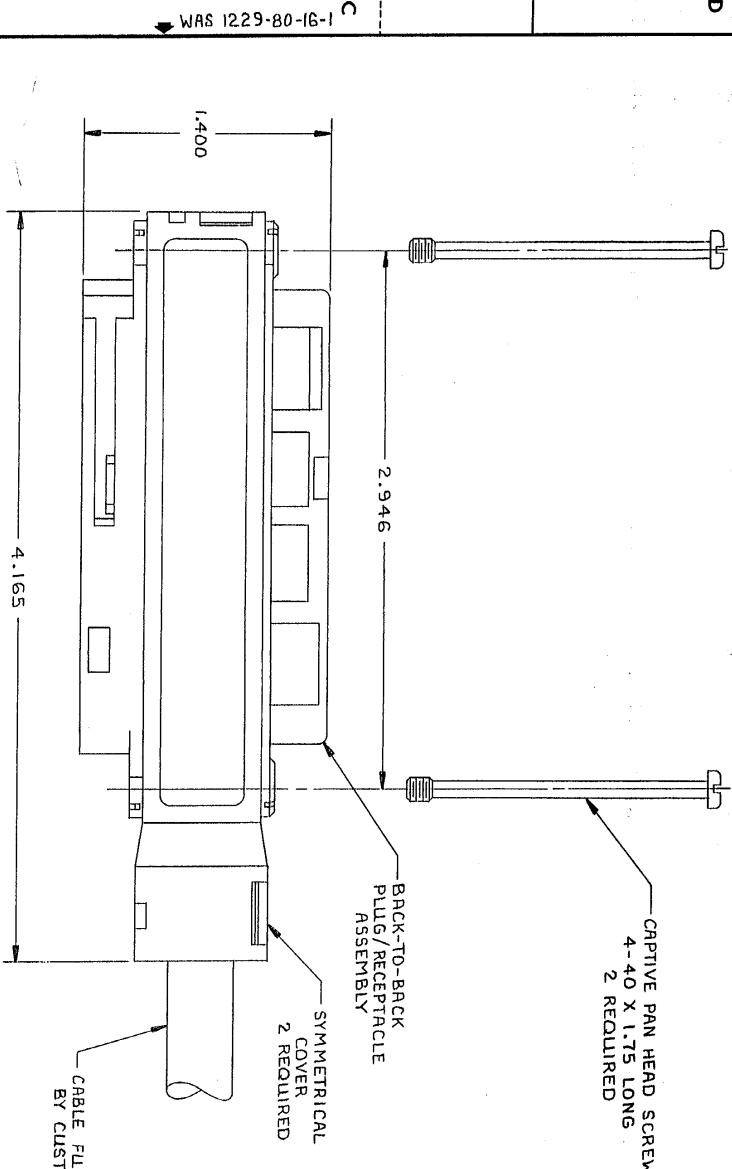
2

1

LOC

RA 80

P	F	ZONE	LTR	REVISIONS		DATE	APPROVED
				DESCRIPTION			
6				B	REVISED: EUN AA-7810	1-92	11/15/87



- △ MATERIAL: HOUSINGS & COVERS-THERMOPLASTIC(BLACK)  
TERMINALS-GOLD OVER NICKEL PLATED  
HIGH STRENGTH COPPER ALLOY.  
HARDWARE-ZINC PLATED STEEL
1. KIT SHOWN ASSEMBLED, HOWEVER, HARDWARE AND COVERS ARE INSTALLED AFTER CABLE IS APPLIED TO CONNECTORS.
  2. COVERS AND HARDWARE SHIPPED UNASSEMBLED.
  3. WIRE SIZE: 26 AWG SOLID OR 24 AWG 7 STRANDS OF COPPER CONDUCTORS. MAX INSULATION DIA OF .045 IS ACCEPTABLE FOR MOST APPLICATIONS.
  4. CABLE RANGE: .380-.400 DIA.
  5. PLUG AND RECEPTACLE ARE BONDED TOGETHER.
  6. THE CONTACT SURFACES OF THE TERMINALS ARE COATED WITH LUBRICANT.
  7. ALL DIMENSIONS SHOWN ARE FOR REFERENCE ONLY UNLESS OTHERWISE SPECIFIED.
  8. CENTER-TO-CENTER SPACING OF TERMINALS IS .085.
  9. KIT SHIPPED IN POLY BAG FORM.

553257-1 AS SHOWN

UNLESS OTHERWISE SPECIFIED DIMENSIONS ARE IN INCHES. TOLERANCES ON: DIMENSIONS ANGLES				CONTRACT NO		PART NO	
± .010				DR 0.101 11-11-80		AMP INCORPORATED Harrisburg, Pa.	
MATERIAL				CHK MDP/uid 11-12-80		NAME	
APPD 5/10/80 11-12-80				APPD 8/10/80 11/12/80		KIT, BACK-TO-BACK, 50 POSITION, B SLOT (CHAMP-LOK, PLUG/RECEPTACLE, THIN FLANGE)	
FINISH				OTHER APPD Kitch 11/18/80		SIZE CODE IDENT NO DRAWING NO	
△				SCALE 2/1		C 00779 553257	

CUSTOMER DRAWING

AMP 1471-6 REV 12-78