



Distributor of TE Connectivity AMP Connectors: Excellent Integrated System Limited
Datasheet of 103292-2 - Connector Receptacle 48 Position 0.100" (2.54mm) Gold Through
Hole

Contact us: sales@integrated-circuit.com Website: www.integrated-circuit.com

Excellent Integrated System Limited

Stocking Distributor

Click to view price, real time Inventory, Delivery & Lifecycle Information:

[TE Connectivity AMP Connectors
103292-2](#)

For any questions, you can email us directly:

sales@integrated-circuit.com

DRAWING MADE IN THIRD ANGLE PROJECTION

3

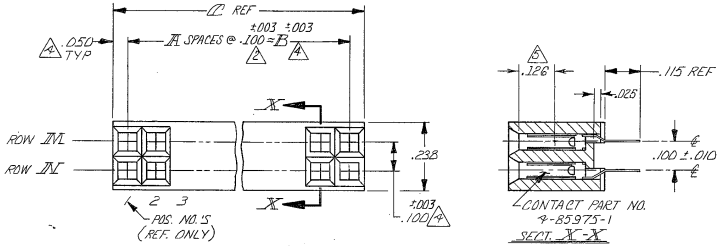
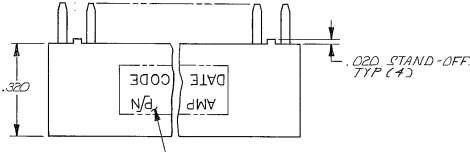
2

1

DIST 39 LOC AD

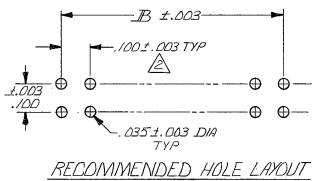
THIS DRAWING IS UNPUBLISHED. RELEASED FOR PUBLICATION JUNE 8, 1983.
 © COPYRIGHT 1983 BY AMP INCORPORATED, HARRISBURG, PA. ALL INTERNATIONAL RIGHTS RESERVED. AMP PRODUCTS MAY BE COVERED BY U.S. AND FOREIGN PATENTS AND/OR PATENTS PENDING.

		REVISIONS			
P	F	ZONE	DESCRIPTION	DATE	APPROVED
		B	REL. WAS 5200-28-6 DUST		
		A	ECN AD-2687	7/1/83	[Signature]
		B	REV PER 0010-0720-93	9-93	[Signature]
		C	REV PER 0010-1604-94	RS 5/8/94	[Signature]
		D	EC 0010-0710-96	1/7/96	[Signature]
		E	REV PER 0621-0129-98	11/11/98	[Signature]



- △ HOT EMBOSS AMP TRADEMARK AND DATE CODE WITH .062±.015 CHARACTERS AS PART SIZE PERMITS. THE ORDER AND LOCATION IS OPTIONAL.
- △ TOLERANCE NON-CUMULATIVE.
- △ DUPLEX PLATED-.000030 GOLD IN CONTACT AREA, .000010-.000200 BRIGHT TIN-LEAD ON SOLDER TINES, ALL OVER .000050 NICKEL.
- △ THESE DIMENSIONS PERTAIN TO CAVITY CENTERLINES ONLY - NOT CONTACT LOCATIONS.
- △ POINT OF MEASUREMENT FOR PLATING THICKNESS (MEASURED INSIDE CONTACT BEAMS).

△ OBSOLETE PART NUMBER



OBSOLETE	30	1, 2, 18, 19	1, 2, 18, 19	1, 900	1, 800	18	38	103292-3
	40	1, 2, 23, 24	1, 2, 23, 24	2, 400	2, 300	23	48	103292-2
	52	1, 2, 29, 30	1, 2, 29, 30	3, 000	2, 900	29	60	103292-1
		NO. OF ROW III	ROW III					
		ACTIVE POS.	POS. OMITTED					

UNLESS OTHERWISE SPECIFIED DIMENSIONS ARE IN INCHES. TOLERANCES ON: DECIMALS ± .005 ANGLES ± .005	CONTRACT NO	AMP AMP INCORPORATED Harrisburg, Pa. 17105
	DR M.G. Paul 6/2/83 CHK D. White 7-15-83	
MATERIAL HOUSING: FLAME RETARDANT THERMOPLASTIC, COLOR: BROWN CONTACTS: PHOS. BRONZE	APRD A. Nunnally 7-15-83 APRD W. Barry 7-18-83 DSGN APPD	NAME ASSY, MOD II, DOUBLE ROW, .100X.100 VERTICAL MOUNTED, SELECTIVELY LOADED
FINISH CONTACTS: △	OTHER APPD	SIZE C
		FSCM NO 00779
		DRAWING NO 103292
		SCALE
		SHEET 1 OF 1