



## Excellent Integrated System Limited

Stocking Distributor

Click to view price, real time Inventory, Delivery & Lifecycle Information:

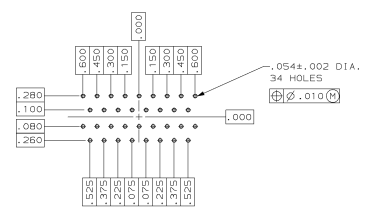
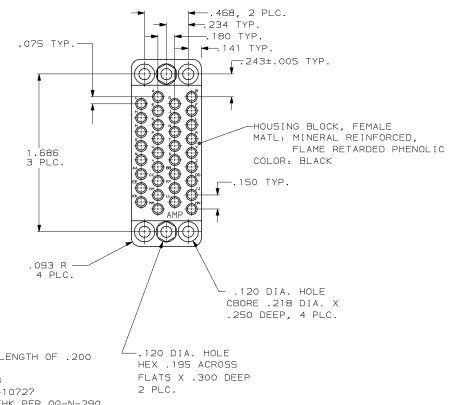
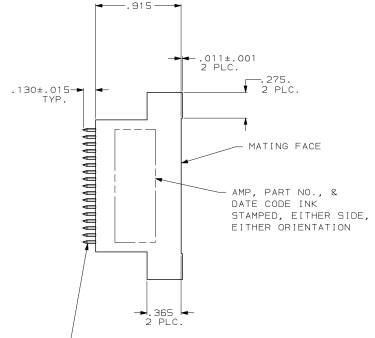
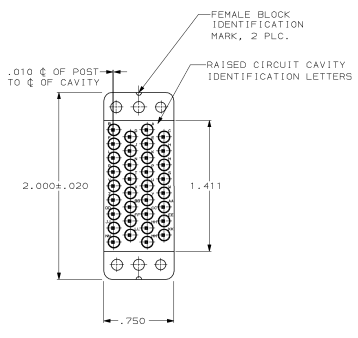
[TE Connectivity AMP Connectors  
213473-1](#)

For any questions, you can email us directly:

[sales@integrated-circuit.com](mailto:sales@integrated-circuit.com)

DRAWING MADE IN THIS W/ O PROJECTION  
 THIS DRAWING IS UNCONTROLLED  
 RELEASED FOR PUBLICATION  
 © COPYRIGHT 19 87 AMP INCORPORATED. ALL INTERNATIONAL RIGHTS RESERVED.

REV		DATE	DESCRIPTION	BY	APP'D
D	REV PER EC	0020-735-34			TC
E	REV PER EC	0020-1131-34			AC
F	REV PER EC	0020-1460-34			TC



RECOMMENDED P.C. BOARD LAYOUT

SOCKET CONTACT ASSY., SIZE 16 W/.023 x .023 POST, 34 REGD.  
 BODY-MATL: BRASS PER MIL-C-50  
 FINISH: PLATED GOLD .000030 THK PER MIL-G-45204 FOR A LENGTH OF .200 MIN. FROM MATING END OF CONTACT WITH POINT OF MEASUREMENT (SIDE 90° TO SEAM) .100 FROM MATING END OF CONTACT). .000100 MIN TIN-LEAD PER MIL-T-10727 IN WIRE BARREL AREA, BOTH OVER NICKEL .000050 THK PER QQ-N-290  
 SPRING-MATL: STAINLESS STEEL PER QQ-S-766  
 POST-MATL: BRASS PER ASTM-B-134  
 FINISH: PLATED MATTE TIN-LEAD PER MIL-T-10727 OVER NICKEL .000050 THK PER QQ-N-290

DO NOT SCALE PRINT. UNLESS SPECIFIED DIMENSIONS IN INCHES TOLERANCES ON 3 PLC DEC ± .010 3 PLC DEC ± .010		DR 7-8-87 R. HOFFERER	AMP Incorporated Harrisburg, PA 17105-3608
SEE CALLOUTS	MATERIAL	CHK 7-8-87 C. LAVER	
FINISH	APPLICATION SPEC	APP'D 7-10-87 R. WALTER	NAME SOCKET CONNECTOR ASSY, M SERIES V.35, 34 POSN, LOADED
SEE CALLOUTS	WEIGHT	SCALE 2:1	DRAWING NO 00779 ©=213473