

Excellent Integrated System Limited

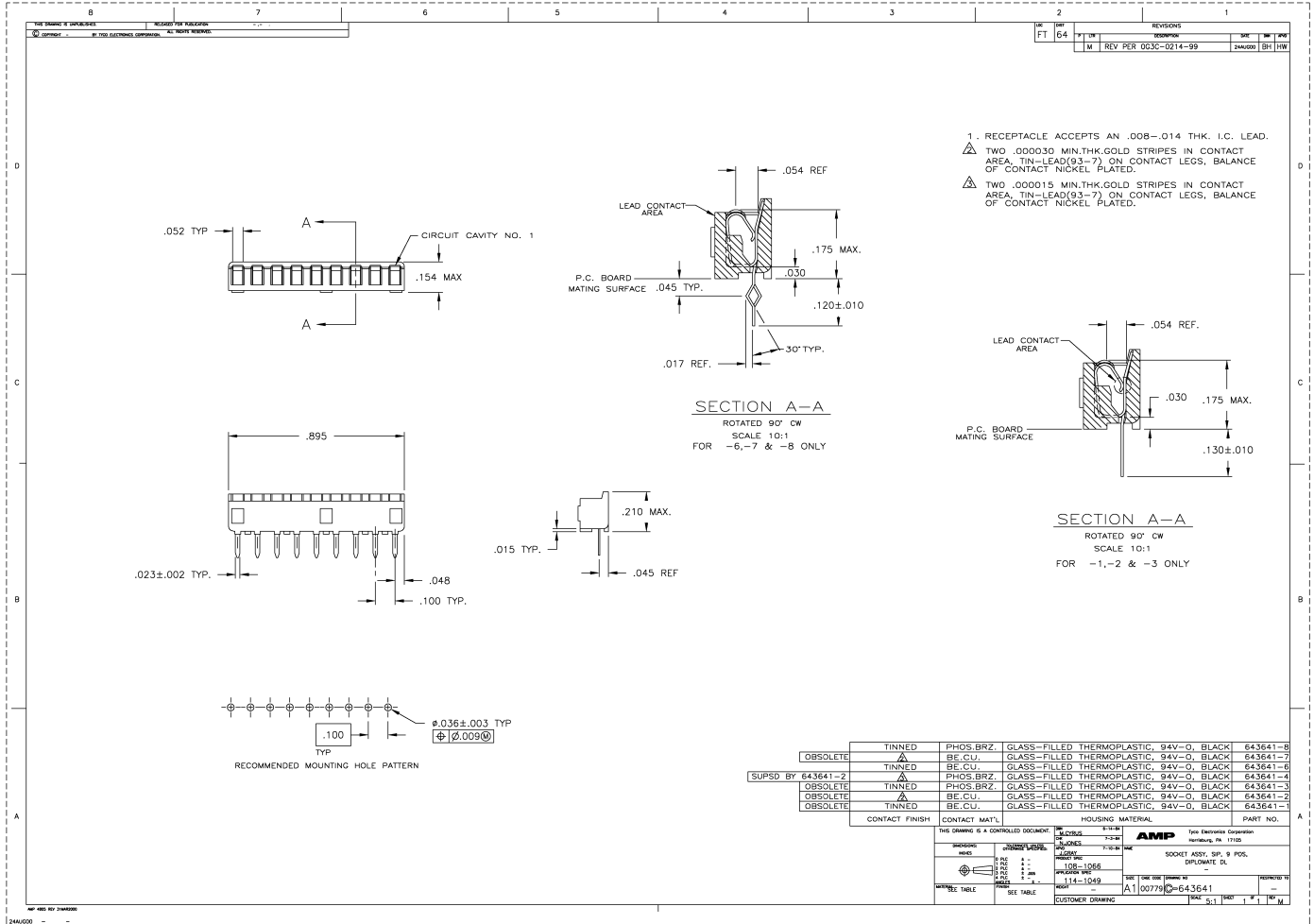
Stocking Distributor

Click to view price, real time Inventory, Delivery & Lifecycle Information:

[TE Connectivity AMP Connectors](#)
[643641-6](#)

For any questions, you can email us directly:

sales@integrated-circuit.com



| CONTACT FINISH | CONTACT MTL. | HOUSING MATERIAL | PART NO. | |
|----------------|--------------|------------------------------------------|------------------------------------------|----------|
| TINNED | PHOS. BRZ. | GLASS-FILLED THERMOPLASTIC, 94V-0, BLACK | 643641-8 | |
| OBsolete | A | BE. CU. | GLASS-FILLED THERMOPLASTIC, 94V-0, BLACK | 643641-7 |
| TINNED | A | PHOS. BRZ. | GLASS-FILLED THERMOPLASTIC, 94V-0, BLACK | 643641-4 |
| OBsolete | A | BE. CU. | GLASS-FILLED THERMOPLASTIC, 94V-0, BLACK | 643641-3 |
| OBsolete | A | PHOS. BRZ. | GLASS-FILLED THERMOPLASTIC, 94V-0, BLACK | 643641-2 |
| OBsolete | A | BE. CU. | GLASS-FILLED THERMOPLASTIC, 94V-0, BLACK | 643641-1 |

| SHIPPING METHOD | QUANTITY RANGE | PRICE | DATE |
|-----------------|----------------|-------|------|
| 1 | 1-100 | | |
| 2 | 101-1000 | | |
| 3 | 1001-10000 | | |
| 4 | 10000+ | | |

| REV | DATE | BY | CHKD | DESCRIPTION |
|-----|--------|----|------|----------------------|
| 1 | 14-049 | | | REV PER 003C-0214-99 |

AMP
 Total Electronic Corporation
 Harrisburg, PA 17105

SOCKET ASSY, SIP, 9 POS.
 SIP-044E DL

REV: 14-049
 A1 00779 643641

CUSTOMER DRAWING