

Excellent Integrated System Limited

Stocking Distributor

Click to view price, real time Inventory, Delivery & Lifecycle Information:

[TE Connectivity AMP Connectors](#)
[650835-1](#)

For any questions, you can email us directly:

sales@integrated-circuit.com

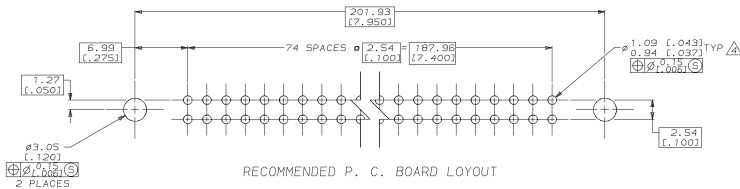
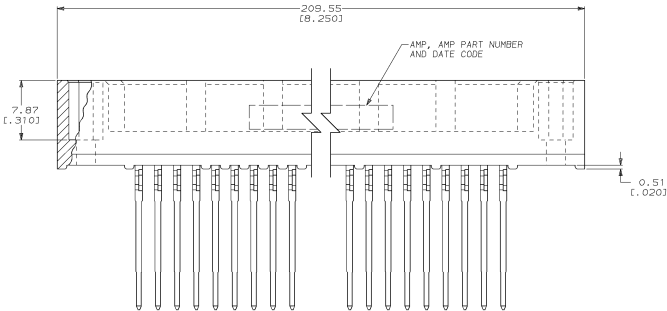
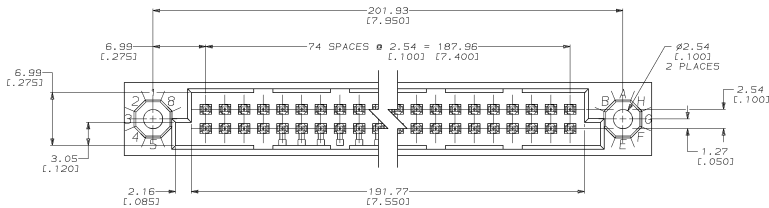


Distributor of TE Connectivity AMP Connectors: Excellent Integrated System Limited

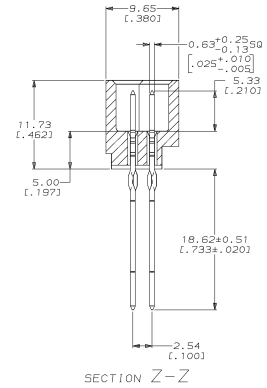
Datasheet of 650835-1 - HDI PIN ASSY 2 ROW 150 POS

THIS DRAWING IS UNCONTROLLED:	RECORD FOR IDENTIFICATION:
BY: [signature]	BY: [signature]

REV	DATE	DESCRIPTION	BY	CHK	APP
AD	25				
0		DRAWN			



- △ HOUSING MATERIAL: THERMOPLASTIC, COLOR-NATURAL.
- △ CONTACT MATERIAL: PHOSPHOR BRONZE.
- △ CONTACT FINISH: .00127-.00254 (.000050-.000100) NICKEL UNDERPLATE ALL OVER; 0.00127 (.000050) DURAGOLD PLATE IN CONTACT AREA, TIN-LEAD PLATED POSTS.
- △ ACTION PIN POSTS REQUIRE 2.35 (.093) MIN THICK P.C. BOARD. RECOMMENDED P.C. BOARD HOLES ARE #1.151 (.0453) PLATED THRU WITH 0.025-0.076 (.001-.003) COPPER, WITH 0.0076 (.0003) MIN TIN-LEAD PLATING; FINISHED HOLE AFTER PLATING #0.94-1.02 (.037-.043).



THIS DRAWING IS A CONTROLLED DOCUMENT FOR AMP PROPRIETARY INFORMATION.		DATE	7-26-95	REV	1
IT IS SUBJECT TO CHANGE AND TO OBTAIN THE LATEST REVISIONS, CONSULT THE AMP WEBSITE FOR THE LATEST INFORMATION.		DATE	7-26-95	REV	1
DRAWN BY: [signature]		DATE	7-26-95	REV	1
CHECKED BY: [signature]		DATE	7-26-95	REV	1
APPROVED BY: [signature]		DATE	7-26-95	REV	1
PART NUMBER		AMP Incorporated Harrisburg, PA 17105-3608			
MATERIAL		PIN ASSEMBLY, HDI, 2 ROW WITH 18.62 (.733) LONG ACTION PINS AND 0.00127 (.000050) DURAGOLD			
CUSTOMER DRAWING		DATE CODE	A11 00779	QUANTITY	650835
		REV	4.1	REV	0