

Excellent Integrated System Limited

Stocking Distributor

Click to view price, real time Inventory, Delivery & Lifecycle Information:

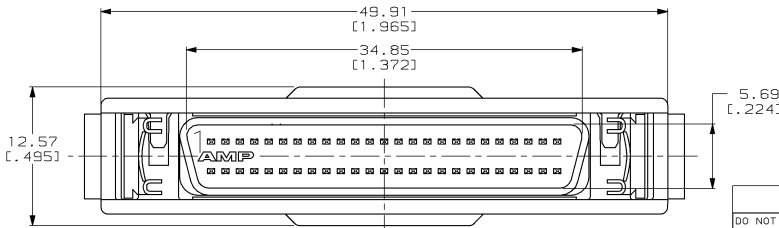
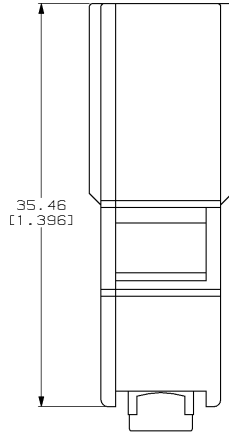
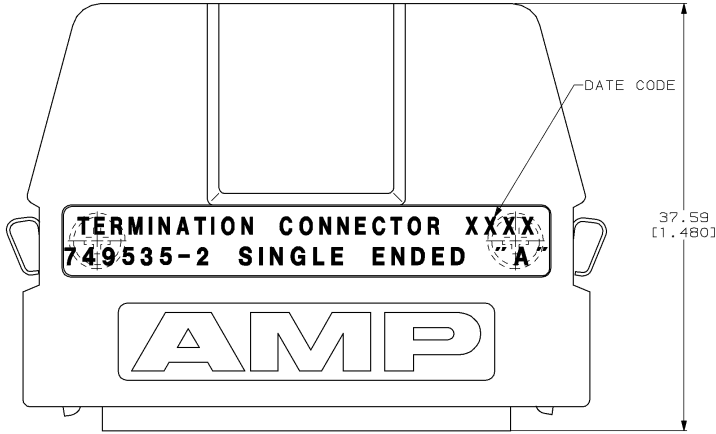
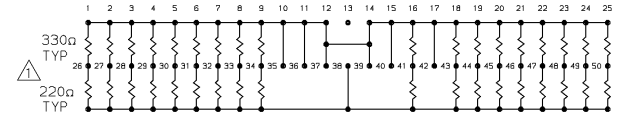
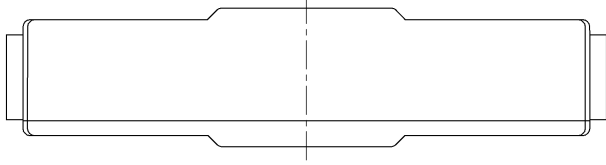
[TE Connectivity AMP Connectors](#)
[749535-2](#)

For any questions, you can email us directly:

sales@integrated-circuit.com

DRAWING MADE IN THIRD ANGLE PROJECTION
 THIS DRAWING IS UNPUBLISHED. RELEASED FOR PUBLICATION .19
 © COPYRIGHT 19 BY AMP INCORPORATED. ALL INTERNATIONAL RIGHTS RESERVED.

MOD		LOC	Q1ST	REVISIONS				DATE	APPD	
P	F	ZONE	LTR	DESCRIPTION						
1	1	BD	62	E	REV	PER	EC	0020-601-93	10/27/93	PR
				F	REV	PER	EC	0020-1283-94	01/04/95	PR



TOLERANCE: ±5%

AS SHOWN		749535-2	
REMARKS		PART NO	
DO NOT SCALE PRINT. UNLESS SPECIFIED DIMENSIONS IN mm [INCHES] TOLERANCES ON + 2 PLC DEC ±.25 (.010) 3 PLC DEC ± - ANGLES ± - MATERIAL HOUSING: ZINC DIE CASTING CONTACT: PHOS BRONZE INSERT: THERMOPLASTIC RESISTOR: THICK FILM NETWORK ON ALUMINA SUBSTRATE LATCHES: STAINLESS STEEL FINISH HOUSING: NICKEL OVER COPPER CONTACT: 30g GOLD OVER NICKEL LATCHES: NONE		AMP AMP INCORPORATED Harrisburg, Pa. 17105 NAME TERMINATION CONNECTOR AMPLIMITE .050 Series 50 POSN, PLUG	
DR 09/25/89 S.G. SMITH	CHK 09/25/89 K. ULERY	APPD 09/25/89 B. MOSSER	APPD 09/25/89 E. MYERS
APPLICATION SPEC		SIZE C	CAGE CODE 00779
WEIGHT -		SCALE 4:1	DRAWING NO 749535-2
			SHEET 1 OF 1