

Excellent Integrated System Limited

Stocking Distributor

Click to view price, real time Inventory, Delivery & Lifecycle Information:

[TE Connectivity AMP Connectors
227433-1](#)

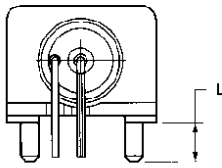
For any questions, you can email us directly:

sales@integrated-circuit.com

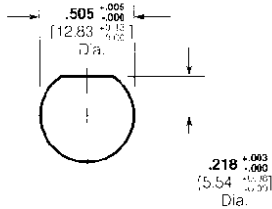
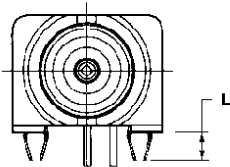
**Right-Angle
 PC Board/Panel Mount
 Jacks**

Plating
 Body — Nickel
 Center Contact — See chart
 Dielectric — Polymethyl Pentene
 Lockwasher and Jam Nut see
 page 35.

Mounting Post Style



Compliant Post

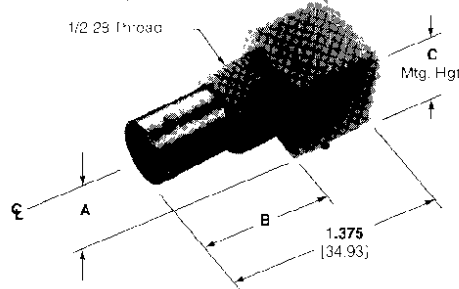


Maximum Panel Thickness **.240** [6.1]

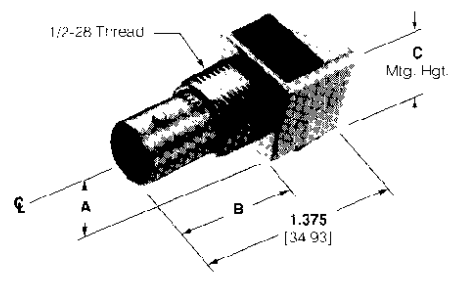
Recommended Panel Cutout

BNC Connectors, 50 Ohm (Continued)

VALOX Body



Metal Body



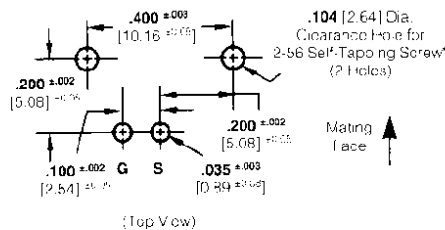
Body Material	Center Contact Plating	Dimensions			Part Numbers				
		A	B	C	Without Mounting Posts	With Mounting Posts	L	With Compliant Posts	E
VALOX, White	Tin-Lead	.338 8.59	.835 21.21	.625 15.88	226990-1	227161-1	.137 3.48	—	—
	Gold1	.338 8.59	.835 21.21	.625 15.88	226990-3	227161-3	.137 3.48	—	—
	Gold1	.272 6.91	.835 21.21	.519 13.18	—	227161-7	.137 3.48	414684-1	.185 4.70
	Gold2	.272 6.91	.835 21.21	.519 13.18	—	1-227161-4	—	—	—
	Gold3	.272 6.91	.835 21.21	.519 13.18	—	415082-1	—	—	—
	Tin-Lead	.272 6.91	.835 21.21	.519 13.18	226990-7	—	—	—	—
VALOX, Black	Tin-Lead	.338 8.59	.835 21.21	.625 15.88	226990-2	227161-2	.137 3.48	—	—
	Gold1	.338 8.59	.835 21.21	.625 15.88	226990-6	227161-6	.137 3.48	—	—
	Gold1	.272 6.91	.835 21.21	.519 13.18	—	227161-9	.137 3.48	415218-1	.110 2.79
Metal	Gold1	.243 6.17	.835 21.21	.460 11.68	—	415046-1	—	415046-2	—
	Tin-Lead	.325 8.26	.820 20.83	.625 15.88	227433-1	227561-1	.137 3.48	—	—
	Gold1	.325 8.26	.820 20.83	.625 15.88	227676-1	227577-1	.137 3.48	222785-1	.153 3.89
	Gold1	.272 6.91	.820 20.83	.500 12.70	—	413879-1	.137 3.48	—	—
High Temp. Housing	Gold1	.272 6.91	.820 20.83	.500 12.70	—	413879-2	.137 3.48	—	—
	Gold1	.272 6.91	.835 21.21	.519 13.18	—	1-227161-3*	—	—	—

Plating:

Gold 1 — .000030 [0.00076] thick
 Gold 2 — .000050 [0.00127] thick
 Gold 3 — .000003 [0.00008] thick

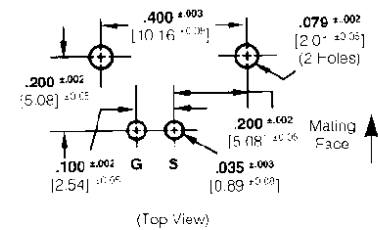
Note: If an Insulating Bushing is required see part number 330620 and Panel Cutout on page 30.
 *IR reflow compatible

Without Mounting Posts



* Screw for panel thickness of 3/32 [2.38] or greater
Part No. 221108-2.
 Screw for panel thickness of less than 3/32 [2.38]
Part No. 221108-4.

With Mounting Posts



Recommended PC Board Layouts