

Excellent Integrated System Limited

Stocking Distributor

Click to view price, real time Inventory, Delivery & Lifecycle Information:

[TE Connectivity AMP Connectors](#)
[745174-5](#)

For any questions, you can email us directly:

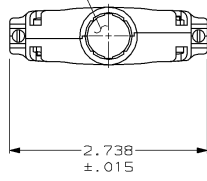
sales@integrated-circuit.com

DRAWING MADE IN THIRD ANGLE PROJECTION

THIS DRAWING IS UNPUBLISHED. RELEASED FOR PUBLICATION .19
 © COPYRIGHT 19 BY AMP INCORPORATED. ALL INTERNATIONAL RIGHTS RESERVED.

| LOC | QTY | P | F | ZONE | LTR | REVISIONS | DATE | APPR |
|-----|-----|---|---|------|-----|------------------------|-----------|------|
| FT | 38 | | | | | | | |
| | | | | | C | REDRAWN | 7-6-90 | - |
| | | | | | D | OBS 1-4 PER ECN BD6177 | 08/19/92 | TS |
| | | | | | E | REV PER EC 0020-191-96 | 14 AUG 96 | JS |

OPENING FOR CABLE
 SEE DASH NO. FOR DIA



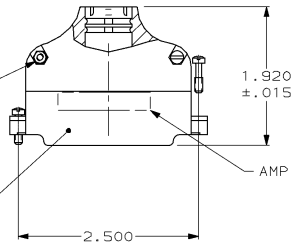
CABLE CLAMP (QTY:2)
 MATERIAL: ZINC ALLOY, NICKEL
 OVER COPPER.

#4-40 FILLISTER HEAD
 SCREW MATERIAL: STEEL
 ZINC PLATED, (QTY:2)

#4-40 FILLISTER HEAD
 STEEL SCREW & HEX NUT
 ZINC PLATED, 2 EACH,
 REQUIRED

TEXTURED FINISH

AMP LOGO



.800
±.015

.620
±.015

OBSOLETE

OBSOLETE

OBSOLETE

| P | AS SHOWN | .530 | 2-745174-7 |
|------------|---|-----------|------------|
| | SUPPLIED W/O MTG SCREWS W/O AMP LOGO (BULK PACKED) | | |
| F | | .350 | 1-745174-6 |
| T | | .650 | 2-745174-6 |
| R | AS SHOWN | .575 | 2-745174-5 |
| N | BULK | .500 | 2-745174-4 |
| J | PACKED | .425 | 2-745174-3 |
| F | | .350 | 2-745174-2 |
| T | | .650 | 2-745174-1 |
| R | SUPPLIED W/O MTG SCREWS W/ AMP LOGO | .575 | 2-745174-0 |
| N | | .500 | 1-745174-9 |
| J | | .425 | 1-745174-8 |
| F | | .350 | 1-745174-7 |
| F | SUPPLIED W/O MTG SCREWS | .350 | 1-745174-5 |
| J | | .425 | 1-745174-4 |
| N | | .500 | 1-745174-3 |
| R | W/ AMP LOGO | .575 | 1-745174-2 |
| T | | .650 | 1-745174-1 |
| F | AS | .350 | 745174-5 |
| J | SHOWN | .425 | 745174-4 |
| N | | .500 | 745174-3 |
| R | | .575 | 745174-2 |
| T | | .650 | 745174-1 |
| NECK IDENT | REMARKS | CABLE DIA | PART NO. |

1. PARTS PACKAGED UNASSEMBLED.

| | | | |
|--|---|--|------------------|
| DO NOT SCALE PRINT. UNLESS SPECIFIED DIMENSIONS IN INCHES TOLERANCES ON + 2 PLC DEC ± .005 ANGLES ± - | DR 7/6/90 A. STAUB BG CHK 9/10/90 J. MCCLINTON APPD 9/11/90 BOB TAYLOR | AMP AMP INCORPORATED Harrisburg, Pa. 17105 | |
| MATERIAL SEE CALLOUTS | PRODUCT SPEC - | NAME CABLE CLAMP KIT, SIZE 4, 37 POSITION, 180°, AMPLIMITE™ SERIES | |
| FINISH SEE CALLOUTS | APPLICATION SPEC - | SIZE C | FSCM NO 00779 |
| | WEIGHT - | DRAWING NO 745174 | SHEET 1 OF 1 |