

Excellent Integrated System Limited

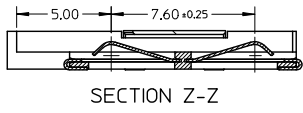
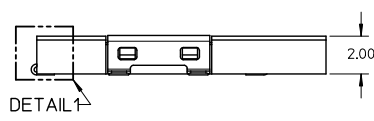
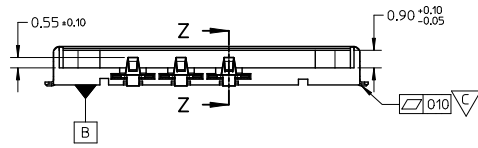
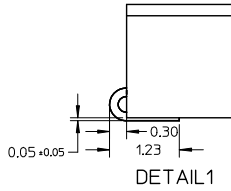
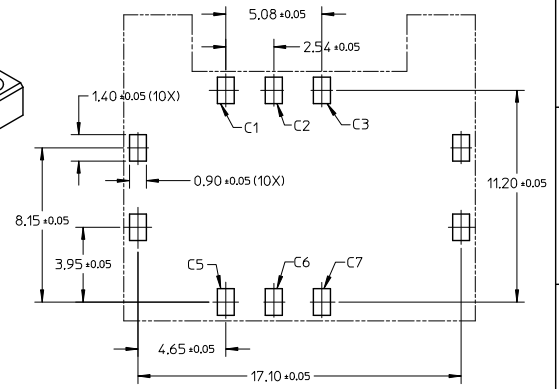
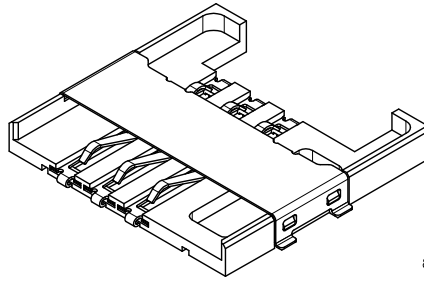
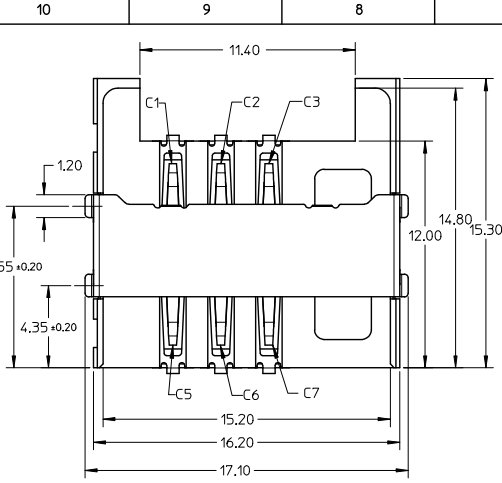
Stocking Distributor

Click to view price, real time Inventory, Delivery & Lifecycle Information:

[Molex Connector Corporation](#)
[0473080001](#)

For any questions, you can email us directly:

sales@integrated-circuit.com



NOTE:

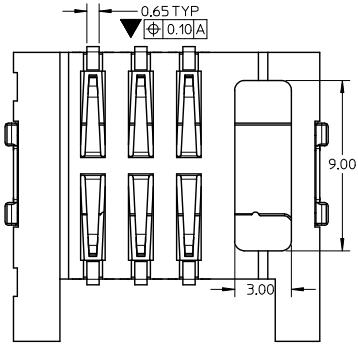
1.MATERIAL:

HOUSING: LCP, GLASS-FILLED, UL 94V-0, COLOR BLACK.
TERMINAL: PHOSPHOR BRONZE, THICKNESS: 0.12MM.
SHELL: STAINLESS STEEL, THICKNESS: 0.2MM.

2.FINISH:

1.0-4.0 MICRON NI OVER ALL.
0.5 MICRON MIN GOLD FOR CONTACT AREA.
0.05 GOLD MICRON MIN FOR SOLDER TAIL.

3.PRODUCT SPECIFICATION: PS-47308-001.



ADD PIN ASSIGNMENT EC NO: SZ015-0807 DRAWN BY: CHYD-SCHONG CHECKED BY: APPR:KHLH 2013/07/02 2015/01/29 2015/01/29	QUALITY SYMBOLS √=0 √=0 √=0 ∇=1 ∇=1	GENERAL TOLERANCES (UNLESS SPECIFIED) mm INCH 4 PLACES ± --- ± --- 3 PLACES ± --- ± --- 2 PLACES ± 0.15 ± --- 1 PLACE ± --- ± --- 0 PLACE ± ± ANGULAR ± 1/2° DRAFT WHERE APPLICABLE MUST REMAIN WITHIN DIMENSIONS	DIMENSION STYLE MM ONLY	DRAWN BY: CYZHU CHECKED BY: YJWU APPROVED BY: GCHEN	DATE: 2005/11/24 DATE: 2005/11/24 DATE: 2005/11/24	SCALE: NTS DESIGN UNITS: METRIC THIRD ANGLE PROJECTION	TITLE: SIM CARD CONNECTOR 2.0MM HEIGHT
			MATERIAL NO. 473080001	DOCUMENT NO. SD-47308-001	SHEET NO. 1 OF 1		
			THIS DRAWING CONTAINS INFORMATION THAT IS PROPRIETARY TO MOLEX INCORPORATED AND SHOULD NOT BE USED WITHOUT WRITTEN PERMISSION				
			SIZE: A3				