

## Excellent Integrated System Limited

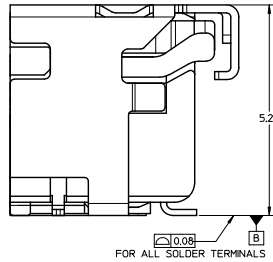
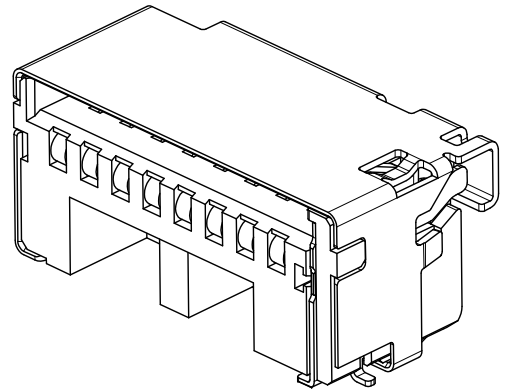
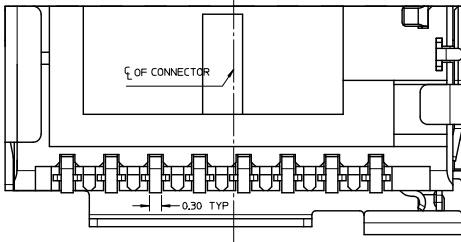
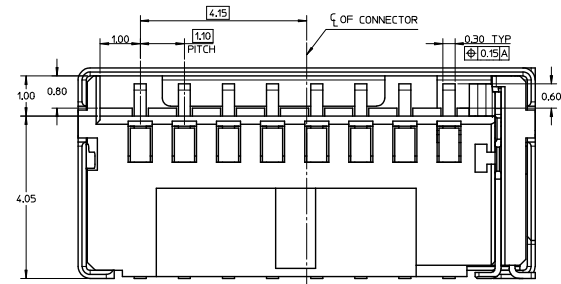
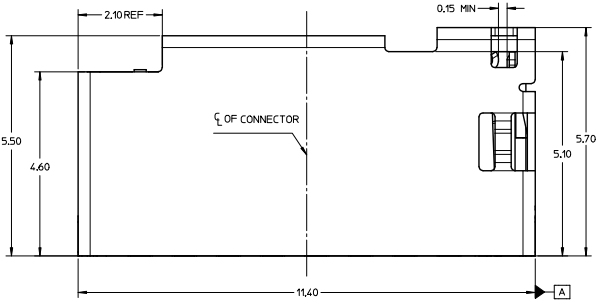
Stocking Distributor

Click to view price, real time Inventory, Delivery & Lifecycle Information:

[Molex Connector Corporation](#)  
[0473095251](#)

For any questions, you can email us directly:

[sales@integrated-circuit.com](mailto:sales@integrated-circuit.com)



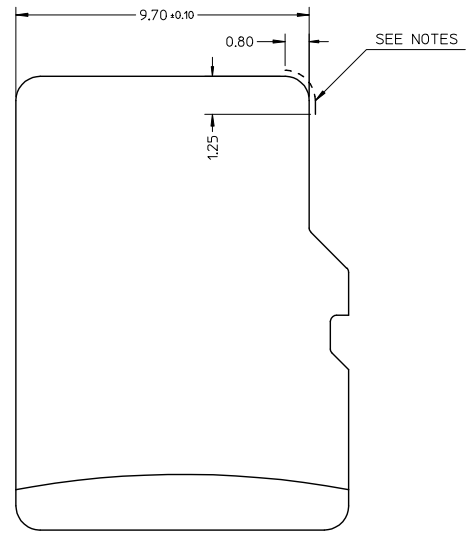
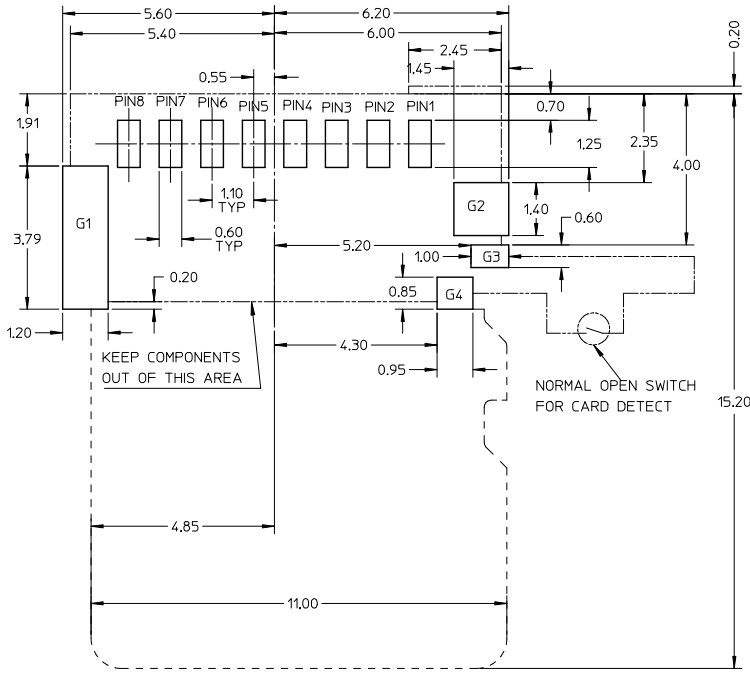
**NOTES:**

- 1. MATERIAL:**  
1-1 HOUSING: LCP, 30% G/F, UL 94V-0, BLACK  
1-2 SIGNAL TERMINAL AND DETECT TERMINAL: PHOSPHOR BRONZE  
1-3 METAL SHELL: STAINLESS STEEL
- 2. FINISH:**  
2-1 SIGNAL TERMINAL: 125 MICRON NICKEL MIN UNDER-PLATED, CONTACT AREA SEE TABLE, GOLD FLASH ON SOLDER AREA.  
2-2 METAL SHELL: GOLD FLASH PLATED OVER NICKEL ON SOLDER AREA.  
2-3 DETECT PIN: 125 MICRON NICKEL MIN UNDER-PLATED, GOLD FLASH ON CONTACT AREA, TIN PLATED ON SOLDER AREA.
- 3. PRODUCT SPECIFICATION:** PS-47309-002.
- 4. PACKAGE SPECIFICATION:** SEE TABLE.
- 5. PRODUCT COMPLIANT TO:** RoHS DIRECTIVE 2002/95/EC AND ELV 2000/53/EC.

47309-2525	0.38 MICRON MIN. GOLD		PK-47309-500
47309-0525	0.38 MICRON MIN. GOLD		
47309-5251	0.76 MICRON MIN. GOLD	INK	PK-47309-525
47309-8251	0.1 MICRON MIN. GOLD		
47309-1525	0.76 MICRON MIN. GOLD	LASER	
PART NUMBER	CONTACT AREA PLATING	DATE CODE PRINTING TYPE	PACKAGING SPECIFICATION

SEE SHEET 2 EC NO: SH2015-0027 DRAWN BY: DRWNAWANG7 CHECKED BY: CHIKXOZHANG APPROVAL IN: 2014/07/15 APPROVAL IN: 2014/07/15	QUALITY SYMBOLS ▽=0 ▽=0 ▽=0	GENERAL TOLERANCES (UNLESS SPECIFIED)		DIMENSION STYLE MM ONLY		SCALE 1:1	DESIGN UNITS METRIC	THIRD ANGLE PROJECTION	
		4 PLACES ±---	±---	DRAWN BY	DATE	TITLE			
		3 PLACES ±---	±---	CHECKED BY	DATE	5.25H MICRO-SD HEADER W/DETECT PIN			
		2 PLACES ±0.15	±---	APPROVED BY	DATE	<b>molex</b> MATERIAL NO. SEE TABLE DOCUMENT NO. SD-47309-525 SHEET NO. 1 OF 2			
1 PLACE ±0.25	±---	APPROVED BY	DATE						
0 PLACE ±---	±---	ANGULAR ± 1°		DRAFT WHERE APPLICABLE MUST REMAIN WITHIN DIMENSIONS					

10 9 8 7 6 5 4 3 2 1



TFR CARD

NOTES:  
NO CONDUCTIVE EXPOSURE TRACE IS ALLOWED ON THE SIDE FACE OF THE CARD AT THIS AREA.

RECOMMENDED PCB LAYOUT  
TOLERANCE FOR PCB LAYOUT: ±0.05

--- CONNECTOR PROFILE  
--- CARD PROFILE

G4	DET
G3	POL
G2	GND
G1	GND
P8	DAT1
P7	DAT0
P6	VSS
P5	CLK
P4	VDD
P3	CMD
P2	CD/DAT3
P1	DAT2
NAME	TYPE
PIN ASSIGNMENT	

UPDATE PCB LAYOUT
EC NO: SH2015-0027
DRAWN: WANG17 2014/07/15
CHKD: XZPHANG 2014/07/15
APPR: ATIN 2014/07/15
REV

QUALITY SYMBOLS
▽=0
▽=0
▽=0

GENERAL TOLERANCES (UNLESS SPECIFIED)
4 PLACES ± --- ± ---
3 PLACES ± --- ± ---
2 PLACES ± 0.15 ± ---
1 PLACE ± 0.25 ± ---
0 PLACE ± --- ± ---
ANGULAR ± 1 °
DRAFT WHERE APPLICABLE MUST REMAIN WITHIN DIMENSIONS

DIMENSION STYLE	MM ONLY
SCALE	1:1
DESIGN UNITS	METRIC
THIRD ANGLE PROJECTION	☉
DRAWN BY	LLIU10
DATE	2008/11/05
CHECKED BY	WFDENG
DATE	2009/07/19
APPROVED BY	HWWANG
DATE	2009/07/19
MATERIAL NO.	SEE SHEET 1

TITLE	5.25H MICRO-SD HEADER W/DETECT PIN
<b>molex</b>	
DOCUMENT NO.	SD-47309-525
SHEET NO.	2 OF 2
THIS DRAWING CONTAINS INFORMATION THAT IS PROPRIETARY TO MOLEX INCORPORATED AND SHOULD NOT BE USED WITHOUT WRITTEN PERMISSION	

9 8 7 6 5 4 3 2 1