

Excellent Integrated System Limited

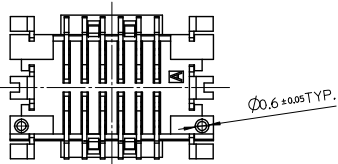
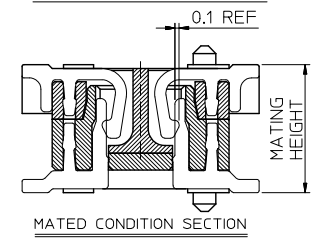
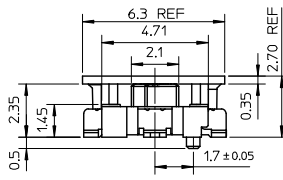
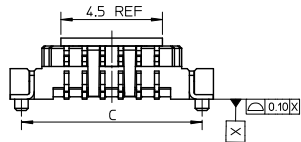
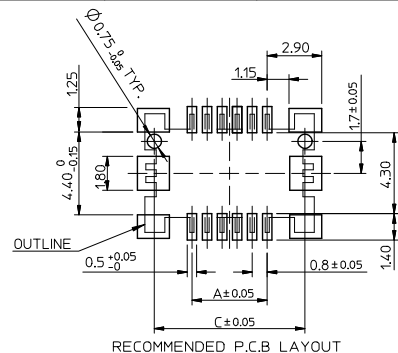
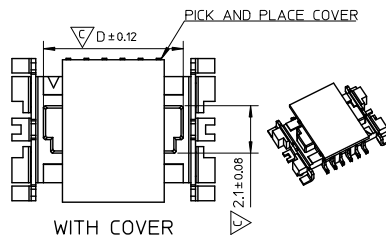
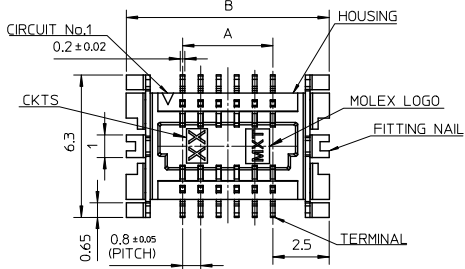
Stocking Distributor

Click to view price, real time Inventory, Delivery & Lifecycle Information:

[Molex Connector Corporation](#)
[0481261201](#)

For any questions, you can email us directly:

sales@integrated-circuit.com



NOTES
 1.COPLANARITY IS 0.1mm MAX.
 2.MATERIAL : HOUSING-HIGH TEMPERATURE THERMOPLASTIC, GLASS FILLED, UL 94V-0, COLOR: NATURE(WHITE)
 TERMINAL- COPPER ALLOY
 FITTING NAIL- COPPER ALLOY
 PICK AND PLACE COVER-HIGH TEMPERATURE THERMOPLASTIC, GLASS FILLED UL 94V-0, COLOR: NATURE(WHITE)
 3.FINISHES : TERMINAL : 48126-XX01:
 TIN MATTE PLATED OVER ALL
 THICKNESS :3.05 MICROMETER MINIMUM,
 NICKEL UNDERPLATED OVER ALL,
 THICKNESS :1.27 MICROMETER MINIMUM,
 48126-XX11:
 GOLD FLASH OVER ALL
 THICKNESS : 0.025 MICROMETER MINIMUM,
 NICKEL UNDERPLATED OVER ALL
 THICKNESS : 1.27 MICROMETER MINIMUM,
 FITTING NAIL :48126-XX01:
 TIN MATTE PLATED OVER ALL
 THICKNESS :3.05 MICROMETER MINIMUM,
 NICKEL UNDERPLATED OVER ALL,
 THICKNESS :1.27 MICROMETER MINIMUM,
 48126-XX11:
 GOLD FLASH OVER ALL
 THICKNESS : 0.025 MICROMETER MINIMUM,
 NICKEL UNDERPLATED OVER ALL
 THICKNESS : 1.27 MICROMETER MINIMUM.

4.PRODUCT SPECIFICATION REFER TO PS-48126-001
 5.DRAWING PACKAGING REFER TO PK-48126-001
 6.TEST SUMMARY REFER TO TS-48210-001
 7.P/N LEGEND 48126-XXX1
 NO OF CKTS PLATING
 0:MATTE TIN
 1:GOLD FLASH OVER ALL
 8.LEAD-FREE AND ROHS COMPLIANT PRODUCT

MOLEX P/N	DIMA	DIMB	DIMC	DIMD	CKT	AVAILABLE
-	3.2	8.2	7.2	4.75	10	-
48126-12X1	4.0	9.0	8.0	5.55	12	YES
-	4.8	9.8	8.8	6.35	14	-
-	5.6	10.6	9.6	7.15	16	-
48126-20X1	7.2	12.2	11.2	8.75	20	YES
48126-22X1	8.0	13.0	12.0	9.55	22	YES
48126-24X1	8.8	13.8	12.8	10.35	24	YES
48126-3001	11.2	16.2	15.2	12.75	30	YES

DEL P/N EC NO: SH2009-0446 DR:WNLWZHU CHK:DMZHANG02 APPR:HMWANG 2008/12/30 2008/12/30 2009/01/08	QUALITY SYMBOLS ▽=0 ▽=2	GENERAL TOLERANCES (UNLESS SPECIFIED)		DIMENSION STYLE MM ONLY		SCALE 6:1	DESIGN UNITS METRIC	THIRD ANGLE PROJECTION	
		4 PLACES ± --- ± --- 3 PLACES ± --- ± --- 2 PLACES ± 0.25 ± --- 1 PLACE ± 0.25 ± --- ANGULAR ± 3 °	DRAWN BY BERNIE DATE 2005/01/27	CHECKED BY ERIC KAO DATE 2005/01/27	TITLE MDC 0.8 MM BTB PLUG CONNECTOR SMT S/T TYPE				
		DRAFT WHERE APPLICABLE MUST REMAIN WITHIN DIMENSIONS	APPROVED BY WILSON DATE 2005/01/27	MATERIAL NO. SEE NOTES		MOLEX INCORPORATED		DOCUMENT NO. SD-48126-001	SHEET NO. 1 OF 1
		THIS DRAWING CONTAINS INFORMATION THAT IS PROPRIETARY TO MOLEX INCORPORATED AND SHOULD NOT BE USED WITHOUT WRITTEN PERMISSION							