

Excellent Integrated System Limited

Stocking Distributor

Click to view price, real time Inventory, Delivery & Lifecycle Information:

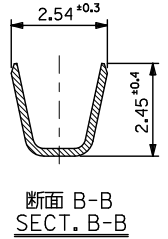
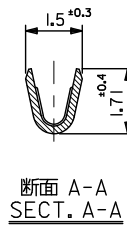
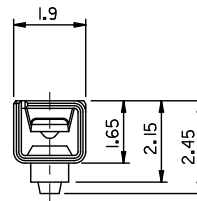
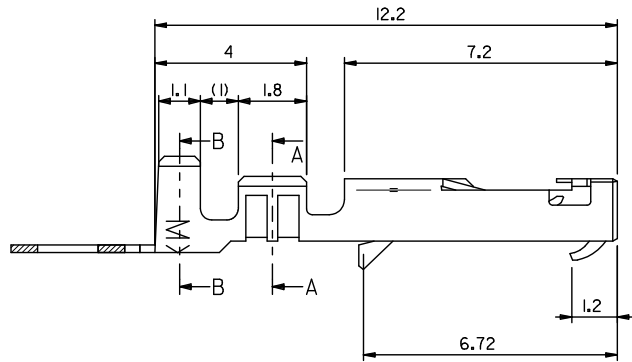
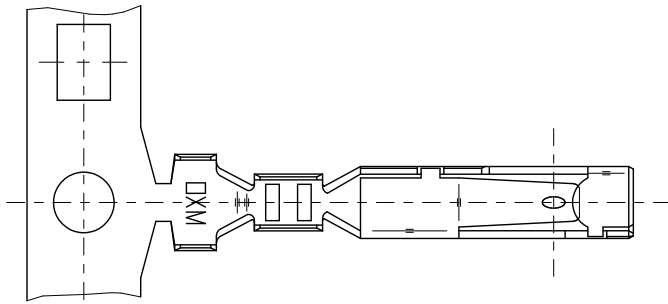
[Molex Connector Corporation](#)
[0503978000](#)

For any questions, you can email us directly:

sales@integrated-circuit.com

注記
NOTES

1. 適合ハウジング : 51111 シリーズ
APPLICABLE HOUSING : 51111 SERIES
2. 材料 MATERIAL
りん青銅 (t = 0.2)
PHOSPHOR BRONZE
錫メッキ 0.9 μm 以上 リフロー処理 (前めっき)
TIN 0.9 μm MIN. REFLOW TREATMENT (PRE-PLATED)
3. 適用電線サイズAWG #22-28
被覆外径 : 1.15~1.8mm
4. ELV及びRoHS適合品
ELV AND RoHS COMPLIANT



PLASTIC BAG	50397-8100	バラ状 LOOSE
REEL	50397-8000	連鎖状 CHAIN
PACKAGING SPEC.	オーダー番号 ORDER NO.	形態 FORM

CONNECTOR SERIES NO. 50397-8x00

RELEASED EC NO. J2010-1818 DRAWN BY NYOSHIKAWA 2010/03/10 CHECKED BY CHIKAKAWA 2010/03/10 APPROVED BY NUKITA 2010/03/11	GENERAL TOLERANCES (UNLESS SPECIFIED)		DIMENSION STYLE MM ONLY		SCALE ---	DESIGN UNITS METRIC	THIRD ANGLE PROJECTION
	10 UNDER	± 0.2	DRAWN BY NYOSHIKAWA	DATE 2010/03/10	TITLE 2.5 WIRE TO WIRE CONN. CRIMP RECEPTACLE		
	10 OVER 30 UNDER	± 0.25	CHECKED BY KASAKAWA	DATE 2010/03/10			
	30 OVER	± 0.3	APPROVED BY NUKITA	DATE 2010/03/10			
ANGULAR	± 3 °	MATERIAL NO.		MOLEX INCORPORATED		SHEET NO.	
DRAFT WHERE APPLICABLE MUST REMAIN WITHIN DIMENSIONS		SEE TABLE		DOCUMENT NO. SD-50397-001		1 OF 1	
THIS DRAWING CONTAINS INFORMATION THAT IS PROPRIETARY TO MOLEX INCORPORATED AND SHOULD NOT BE USED WITHOUT WRITTEN PERMISSION							