

Excellent Integrated System Limited

Stocking Distributor

Click to view price, real time Inventory, Delivery & Lifecycle Information:

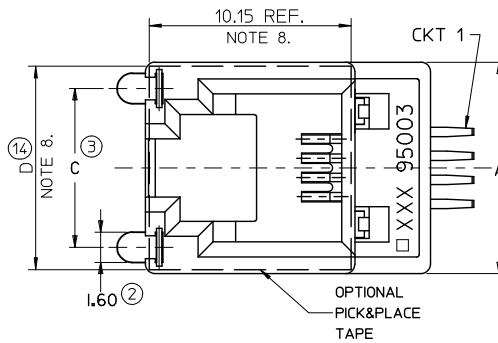
[Molex Connector Corporation](#)
[0855105017](#)

For any questions, you can email us directly:

sales@integrated-circuit.com

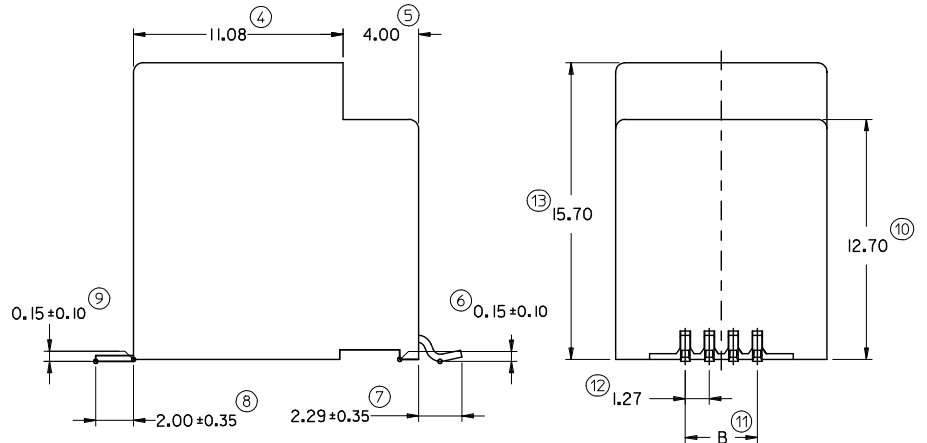
10 9 8 7 6 5 4 3 2 1

PART. NO.	HOUSING SIZE	LOADED CKTS	TOOLED	PACKAGING	PICK & PLACE TAPE	A	B ±0.15	C	D
85510-5020	8	8	YES	BLISTER ON REEL 13"	NO	15.24	8.89	10.77	14.40
85510-5120	8	8	YES	BLISTER ON REEL 13"	YES				+0.2
85510-5028	8	8	YES	BLISTER ON REEL 22"	NO				-0.4
85510-5128	8	8	YES	BLISTER ON REEL 22"	YES				
85510-5019	6	6	YES	BLISTER ON REEL 13"	NO	13.21	6.35	9.95	12.40
85510-5119	6	6	YES	BLISTER ON REEL 13"	YES				+0.2
85510-5027	6	6	YES	BLISTER ON REEL 22"	NO				-0.4
85510-5127	6	6	YES	BLISTER ON REEL 22"	YES				
85510-5018	6	4	NO	BLISTER ON REEL 13"	NO	3.21	3.81	9.95	12.40
85510-5118	6	4	NO	BLISTER ON REEL 13"	YES				+0.2
85510-5026	6	4	YES	BLISTER ON REEL 22"	NO				-0.4
85510-5126	6	4	YES	BLISTER ON REEL 22"	YES				
85510-5017	4	4	YES	BLISTER ON REEL 13"	NO	11.18	3.81	8.40	10.40
85510-5117	4	4	YES	BLISTER ON REEL 13"	YES				+0.4
85510-5025	4	4	YES	BLISTER ON REEL 22"	NO				-0.2
85510-5125	4	4	YES	BLISTER ON REEL 22"	YES				



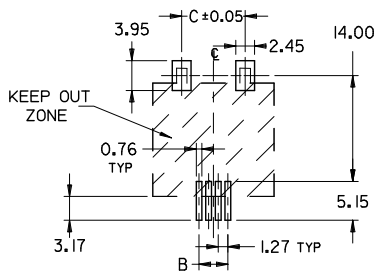
NOTES:

- MATERIAL:
 - HOUSING: LCP FIBER GLASS FILLED UL 94-V0, COLOR BLACK.
 - TERMINAL: COPPER ALLOY PLATED WITH:
 - BASE FINISH: NICKEL
 - CONTACT SURFACE FINISH: GOLD OR GOLD FLASH OVER PALLADIUM NICKEL
- SOLDER NAILS: COPPER ALLOY PLATED WITH TIN
- JACK FOR MATING WITH IEC 60603-7 AND TIA-1096-A PLUGS (MOLEX 95075 SERIES).
- PRODUCT SPECIFICATION PS-95503-001.
- APPLICATION SPECIFICATION: AS-85513-001
- PACKAGING SPECIFICATION: PK-85510
 - SHEET 1 (TAPE ON REEL)
 - SHEET 2 (BLISTER ON REEL 13")
 - SHEET 3 (BLISTER ON REEL 22")
- COPLANARITY OF SIGNAL LEADS: 0.10 MAX
- MANUFACTURING ID CAN BE EITHER MG, MXF OR MXL
- PICK AND PLACE KAPTON AVAILABLE AS OPTION. LAST INSPECTION NUMBER: 14




PCB MOUNTING PATTERNS

(SEE FROM COMPONENT SIDE)
(SCALE 2:1)



(ONLY 4/4 VERSION PADS SHOWN)
ALL DIMENSIONS REF DIMENSIONS

UPDATED DIMENSIONS EC NO: PG2015-0192 TIDRAWN: KEARNS CHKD: STORIEFFIN APPR: STORIEFFIN	DESCRIPTION	QUALITY SYMBOLS ▽=0 ▽=0	GENERAL TOLERANCES (UNLESS SPECIFIED)		DIMENSION STYLE MM ONLY		SCALE 5:1	DESIGN UNITS METRIC	THIRD ANGLE PROJECTION
				mm	INCH	DRAWN BY	DATE	TITLE	
			4 PLACES	± ---	± ---	HB	95/11/21	TOP ENTRY SMT JACKS 4/4 6/6 AND 8/8 POS. WITH SOLDER NAILS	
			3 PLACES	± ---	± ---	CHECKED BY	DATE		
			2 PLACES	± 0.15	± ---	TB	95/11/21		
			1 PLACE	± 0.25	± ---	APPROVED BY	DATE		
			ANGULAR ± 2 °		FB	95/11/21	 MOLEX INCORPORATED		
			DRAFT WHERE APPLICABLE MUST REMAIN WITHIN DIMENSIONS		MATERIAL NO.	DOCUMENT NO.		SHEET NO.	
					SEE CHART		SD-85510-002	1 OF 1	
					THIS DRAWING CONTAINS INFORMATION THAT IS PROPRIETARY TO MOLEX INCORPORATED AND SHOULD NOT BE USED WITHOUT WRITTEN PERMISSION				

TOP ENTRY SMT JACKS
4/4 6/6 AND 8/8 POS.
WITH SOLDER NAILS

MOLEX INCORPORATED

SD-85510-002

1 OF 1