

Excellent Integrated System Limited

Stocking Distributor

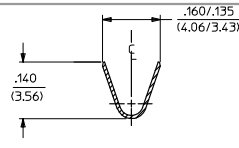
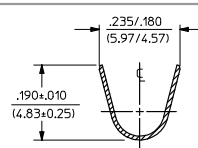
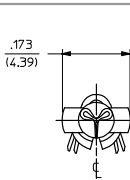
Click to view price, real time Inventory, Delivery & Lifecycle Information:

[Molex Connector Corporation](#)
[0002098103](#)

For any questions, you can email us directly:

sales@integrated-circuit.com

PART NO.	ENG. NO.	DIM. "D" DIA.	INSULATION CRIMP PER
02-09-8103	1973-A(P901)		
02-09-8104	1973-A(P901L)	.091±.003/(2.31±0.08)	SECTION "A-A"-1
02-09-8107	1973-1A(105)	.094±.003/(2.39±0.08)	SECTION "A-A"-1
02-09-8108	1973-2A(P901)		
02-09-8109	1973-2A(P901L)	.091±.003/(2.31±0.08)	SECTION "A-A"-2
-	-	-	-
-	-	-	-



SECTION "A-A"-2
SPECIAL DOUBLE WIRE
CRIMP FOR 1973-2 VERSION

SECTION "A-A"-1
STANDARD VERSION FOR
1973 & 1973-1 VERSIONS

LEGEND

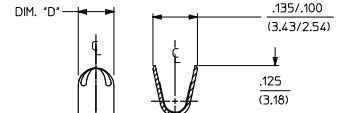
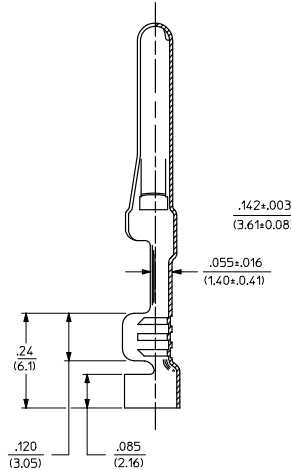
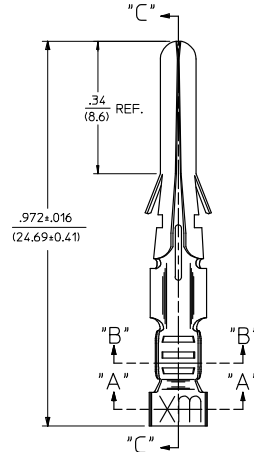
1973-**A**(**XXXX**)*****

VERSION: BLANK=ORIGINAL, 1=MODIFIED PIN DIA., 2=LARGER INSUL. CRIMP

FORM: BLANK=CHAIN, L=LOOSE

P=PREPLATE, BLANK=POSTPLATE

FINISH CODE



SECTION "B-B"

SECTION "C-C"

- NOTES:
- MATERIAL: CARTRIDGR BRASS ALLOY, .010/(0.25) THICK.
 - FINISHES:
 - 105 TIN PLATE .000300/(0.00762) MIN. OVER .000100/(0.00254) MIN. COPPER OVERALL.
 - 901 HOT TIN DIP .000020/(0.00051) MIN.
 - * THE PRIMARY SHIPPING CARTON WILL BE LABELED, "COMPLIANT TO RoHS DIRECTIVE 2002/95/EC AND ANNEX II OF DIRECTIVE 2000/53/EC". AND CARTONS WITHOUT THIS LABEL MAY CONTAIN PRODUCT WITH TIN-LEAD.
 - PACKAGING INFORMATION: NOT AVAILABLE
 - TERMINALS FOR USE WITH .093/(2.36) SERIES HOUSINGS. 1973 & 1973-1 VERSIONS WILL ACCEPT 18 THRU 22 AWG WIRE. 1973-2 VERSION IS FOR USE WITH 14 THRU 18 AWG WIRE AND DOUBLE CRIMPS OF ONE 16 AND ONE 18 AWG OR TWO 18 AWG WIRES.
 - INSERTION FORCE: 3.5 LBS. MAX. WHEN TERMINAL IS INSERTED INTO .124/(3.15) DIA. CORE HOLE.
 - CONTACT RETENTION: 20 LBS. MIN.
 - FLOAT: TERMINAL MAY ROTATE IN HOUSING, BUT SHOULD NOT SPIN FREELY WHEN WIRE IS ROLLED BETWEEN FINGERS.

REVISION	DESCRIPTION	QUALITY SYMBOLS	GENERAL TOLERANCES (UNLESS SPECIFIED)	DIMENSION STYLE IN/MM	SCALE 6:1	DESIGN UNITS INCH	THIRD ANGLE PROJECTION
REVISE NOTE 2		▽=0	4 PLACES ± --- ± ---	mm	DRAWN BY GWC	DATE 1992/06/17	CRIMP TERMINAL, MALE, GROUND PIN, .093 DIA., FOR VARIOUS WIRE SIZES
EC NO: UCP2009-0059	2008/07/08	▽=0	3 PLACES ± --- ± .010	INCH	CHECKED BY	DATE 1992/06/17	
D1	CHKD: BELL 2008/07/10		2 PLACES ± 0.25 ± .014		APPROVED BY GWF	DATE 1992/06/17	MOLEX INCORPORATED
	APPR: SMITH 2008/07/10		1 PLACE ± 0.35 ±		MATERIAL NO. SEE CHART	DOCUMENT NO. SD-1973-*	
			ANGULAR ±1/2°	THIS DRAWING CONTAINS INFORMATION THAT IS PROPRIETARY TO MOLEX INCORPORATED AND SHOULD NOT BE USED WITHOUT WRITTEN PERMISSION			