

Excellent Integrated System Limited

Stocking Distributor

Click to view price, real time Inventory, Delivery & Lifecycle Information:

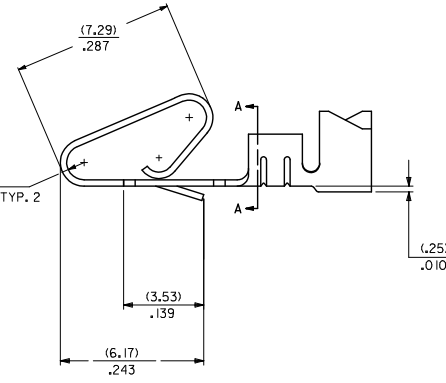
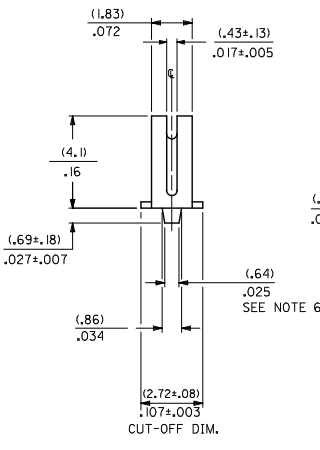
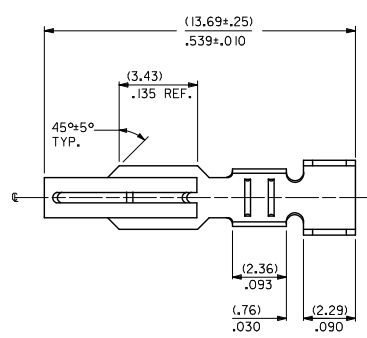
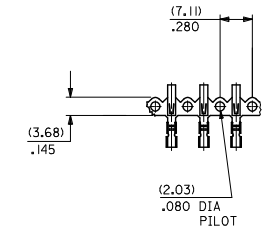
[Molex Connector Corporation](#)
[0008500115](#)

For any questions, you can email us directly:

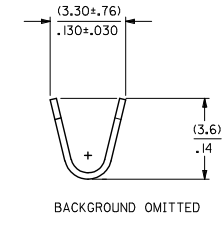
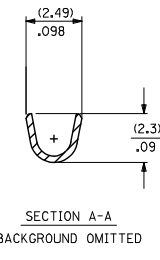
sales@integrated-circuit.com

J
I
H
G
F
E
D
C
B
A

J
I
H
G
F
E
D
C
B
A



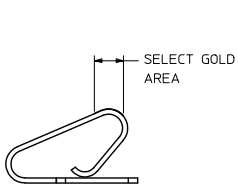
2878- * - * - * - *
 MATERIAL CODE (.27)/.0106 THK
 WINDING SPEC.
 A=BRASS
 B=PHOS BRONZE
 A=PER WINDING DETAIL A
 B=PER WINDING DETAIL B
 L=LOOSE
 PLATING CODE
 (P909) OVERALL HOT TIN DIP: (0.00254)/.000100 MIN.
 (550) SELECT GOLD: (0.00038)/.000015 MIN.
 OVERALL GOLD FLASH: (0.00005)/.000002 MIN.
 OVERALL NICKEL UNDERPLATE: (0.00076)/.000030 MIN.
 (555) SELECT GOLD: (0.00038)/.000015 MIN.
 OVERALL NICKEL UNDERPLATE: (0.00076)/.000030 MIN.
 OPTION CODE
 A= OVERALL PLTGS, AND STD GOLD LOC
 B= LARGER SELECT GOLD LOCATION



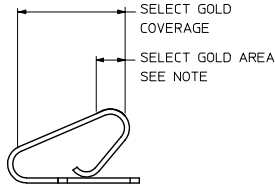
1. MATERIAL: SEE LEGEND
2. FINISH: SEE LEGEND
3. THIS PART CONFORMS TO PRODUCT SPECIFICATIONS PS-08-50, PS-172160-0001
4. PACKAGING SPECIFICATION: LOOSE FORM: PK-2759-001
CHAIN FORM: PK-2878-001
5. CRIMP ACCEPTS 18 TO 20 AWG WIRE WITH (2.79)/.110 MAX. INSULATION DIAMETER WHEN USED WITH 172159 SERIES HOUSINGS. (2.54)/.100 MAX INSULATION DIAMETER WHEN USED WITH 2139 OR 3069 SERIES HOUSINGS. CRIMP ACCEPTS (3.00)/.118 MAX. INSULATION DIAMETER WITH SPECIAL TOOLING.
6. (0.86±0.05)/.034±.002 IS AN OPTIONAL DESIGN.
7. PARTS CONFORM TO CLASS B REQUIREMENTS OF COSMETIC SPECIFICATION PS-45499-002.
8. MATING TERMINALS TO ROUND PINS IS NOT RECOMMENDED.

REVISE NOTES REC NO: UCP2015-3216 DRAWN/TIPER: 2015/02/06 CHKD/BELL: 2015/02/06 APPR/SMITH: 2015/02/18 AM1 REV	QUALITY SYMBOLS ∇=0 ∇=0 ∇=0	GENERAL TOLERANCES (UNLESS SPECIFIED)		DIMENSION STYLE MM/IN		SCALE 8:1	DESIGN UNITS INCH	THIRD ANGLE PROJECTION
		4 PLACES ± --- ± ---	DRAWN BY COMSTOCK	DATE 11/29/88	TITLE TERMINAL, DBL. CANTILEVER KK CRIMP TYPE BIFURCATED molex SD-2878 SHEET NO. 1 OF 2			
		3 PLACES ± --- ± .005	CHECKED BY PATEL	DATE 11/29/88				
		2 PLACES ± 0.13 ± .010	APPROVED BY SMITH	DATE 2015/02/18				
1 PLACE ± 0.25 ± --- 0 PLACE ± --- ± ---	MATERIAL NO. SEE CHART		DOCUMENT NO. SD-2878					
DRAFT WHERE APPLICABLE MUST REMAIN WITHIN DIMENSIONS		ANGULAR ± 1/2°		THIS DRAWING CONTAINS INFORMATION THAT IS PROPRIETARY TO MOLEX INCORPORATED AND SHOULD NOT BE USED WITHOUT WRITTEN PERMISSION				

2878-A-A(*)*			2878-B-A(*)*			2878-A-B(*)*		
PART NO.	ENG. NO.		PART NO.	ENG. NO.		PART NO.	ENG. NO.	
08-50-0115	2878-A-A(P909)B					08-55-0138	2878-A-B(555)B	
08-50-0116	2878-A-A(P909)L						2878-A-B(555)L	
			08-52-0126	* 2878-B-A(P909)B				
			08-52-0127	* 2878-B-A(P909)L				
			08-65-0118	* 2878-B-A(555)B				
			08-65-0119	* 2878-B-A(555)L				
			08-58-0127	* 2878-B-A(550)B				
			08-58-0128	* 2878-B-A(550)L				

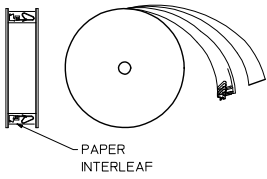


GOLD LOCATION OPTION A

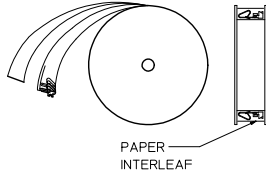


GOLD LOCATION OPTION B

NOTE: GOLD IS SPECIFIED THICKNESS IN SELECT GOLD AREA ONLY.



WINDING DETAIL A



WINDING DETAIL B

SEE SHEET 1 EC NO: UCP2015-3216 DRAWN BY: 2015/02/06 CHKD: BELL APPR: SMITH 2015/02/18	QUALITY SYMBOLS ∇=0 ∇=0 ∇=0	GENERAL TOLERANCES (UNLESS SPECIFIED)		DIMENSION STYLE MM/IN		SCALE 8:1	DESIGN UNITS INCH	THIRD ANGLE PROJECTION	
		4 PLACES ± --- ± ---	mm	INCH	DRAWN BY	DATE	TITLE TERMINAL, DBL. CANTILEVER KK CRIMP TYPE BIFURCATED molex		
		3 PLACES ± --- ± ---	COMSTOCK	11/29/88	CHECKED BY	DATE			
		2 PLACES ± 0.13 ± .010	PATEL	11/29/88	APPROVED BY	DATE			
1 PLACE ± 0.25 ± ---	FSMITH	2015/02/18	MATERIAL NO.	DOCUMENT NO.					
0 PLACE ± --- ± ---	ANGULAR ± 1/2°	DRAFT WHERE APPLICABLE MUST REMAIN WITHIN DIMENSIONS		SEE CHART		SD-2878	SHEET NO. 2 OF 2		