

Excellent Integrated System Limited

Stocking Distributor

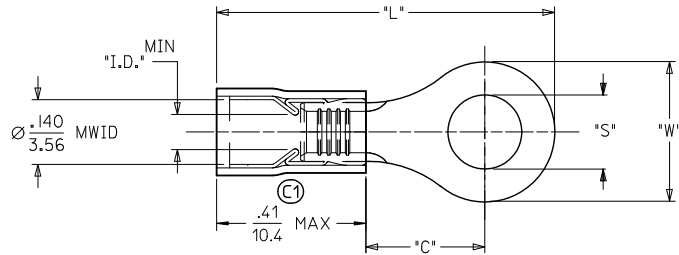
Click to view price, real time Inventory, Delivery & Lifecycle Information:

[Molex Connector Corporation](#)
[0190730050](#)

For any questions, you can email us directly:

sales@integrated-circuit.com

10	9	8	7	6	5	4	3	2	19073
MATERIAL NUMBER	ALTERNATE NUMBER	STUD SIZE	"S"	"W"	"C" MIN (C1)	"L" MAX (C1)	"I.D."	PACKAGING	
190730036	AA-832-04	04	.119(3.02)	.25(6.5)	.24(6.1)	.81 (20.6)	.062(1.57)	LOOSE PIECE	
190730038	AA-832-06	06	.146(3.71)	.25(6.5)	.24(6.1)	.81 (20.6)	.062(1.57)		
190730042	AA-832-08	08	.173(4.39)	.25(6.5)	.24(6.1)	.81 (20.6)	.062(1.57)		
190730046	AA-833-04	04	.119(3.02)	.27(6.9)	.24(6.1)	.82(20.7)	.062(1.57)		
190730047	AA-833-06	06	.146(3.71)	.27(6.9)	.24(6.1)	.82(20.7)	.062(1.57)		
190730048	AA-833-08	08	.173(4.39)	.27(6.9)	.24(6.1)	.82(20.7)	.062(1.57)		
190730049	AA-833-10	10	.198(5.03)	.27(6.9)	.24(6.1)	.82(20.7)	.062(1.57)	TAPE MOUNTED	
190730001	AA-8111-02	02	.094(2.38)	.19(4.8)	.17(4.4)	.72(18.2)	.054(1.37)		
190730003	AA-8111-04	04	.119(3.02)	.19(4.8)	.17(4.4)	.72(18.2)	.054(1.37)		
190730037	AA-832-04T	04	.119(3.02)	.25(6.5)	.24(6.1)	.81 (20.6)	.062(1.57)		
190730040	AA-832-06T	06	.146(3.71)	.25(6.5)	.24(6.1)	.81 (20.6)	.062(1.57)		
190730043	AA-832-08T	08	.173(4.39)	.25(6.5)	.24(6.1)	.81 (20.6)	.062(1.57)		
190730050	AA-833-10T	10	.198(5.03)	.27(6.9)	.24(6.1)	.82(20.7)	.062(1.57)		
190730002	AA-8111-02T	02	.094(2.38)	.19(4.8)	.17(4.4)	.72(18.2)	.054(1.37)		
190730004	AA-8111-04T	04	.119(3.02)	.19(4.8)	.17(4.4)	.72(18.2)	.054(1.37)		



- NOTES:
 1. MATERIAL: COPPER
 PLATING: ELECTROPLATE TIN
 2. FERRULE: TIN-PLATED BRASS
 3. INSULATION: RED NYLON
 4. MWID=MAXIMUM WIRE INSULATION DIA.
 5. ALL DIMENSIONS IN INCHES (MM).
 6. PARTS ARE ROHS COMPLIANT.

FIX TOLERANCES EC NO: VWV2010-0470 DRAWN: THRODAHL 2010/01/27 CHKD: MACNEIL 2010/01/27 APPR: MACNEIL 2010/01/27	QUALITY SYMBOLS ▽=0 ◻=0	GENERAL TOLERANCES (UNLESS SPECIFIED)		DIMENSION STYLE		SCALE	DESIGN UNITS	THIRD ANGLE PROJECTION	
			mm	INCH	IN/MM		1:1		INCH
		4 PLACES	± .005	± .005	DRAWN BY	DATE	TITLE		
		3 PLACES	± .005	± .005	ASAYDEH	05/12/07	RING TONGUE TERMINAL 22-18 AWG AVIKRIMP, 800-SERIES		
			2 PLACES	± 0.13	± .01	CHECKED BY	DATE	MOLEX INCORPORATED	
			1 PLACE	± 0.25	± .01	JLOMASTRO	05/12/07		
			ANGULAR ±1/2°		APPROVED BY	DATE	MATERIAL NO. DOCUMENT NO. SEE CHART SD-19073-004		
			DRAFT WHERE APPLICABLE MUST REMAIN WITHIN DIMENSIONS		RDEROSS	05/12/07	SHEET NO. 1 OF 1		
			THIS DRAWING CONTAINS INFORMATION THAT IS PROPRIETARY TO MOLEX INCORPORATED AND SHOULD NOT BE USED WITHOUT WRITTEN PERMISSION						