

Excellent Integrated System Limited

Stocking Distributor

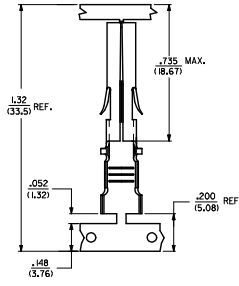
Click to view price, real time Inventory, Delivery & Lifecycle Information:

[Molex Connector Corporation](#)
[0428254002](#)

For any questions, you can email us directly:

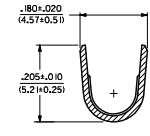
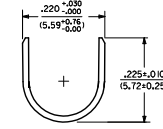
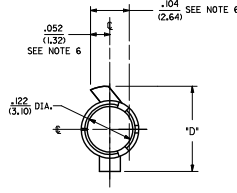
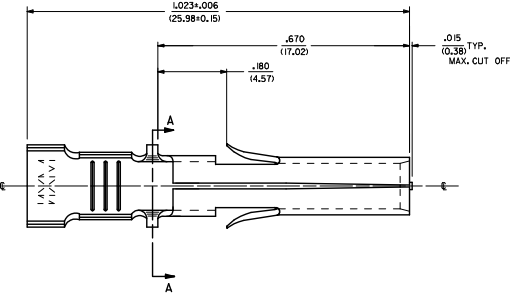
sales@integrated-circuit.com

ITEM NO.	CRIMP SIZE	MATERIAL	PLATING	PACKAGING	'D'
42825-4002	12 AWG	.0160(10.406) THICK BRASS	PRE-TINNED .000020 (0.0005) MIN. TIN	SHIPPED ON REEL	.225 (5.72)



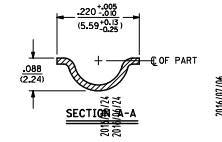
- NOTES:
1. MATERIAL: SEE CHART
 2. FINISH: SEE CHART
 3. PRODUCT SPECIFICATION: PS-40585
 4. PACKAGING: SEE CHART
 5. REELS OF THESE TERMINALS CANNOT HAVE MECHANICAL SPLICES. INDICATED FOR BOTH LOCK AND STOP TABS.
 6. USING SEAM LINE AS VERTICAL CENTERLINE INDICATOR-MAXIMUM EXCURSION FROM HORIZONTAL CENTERLINE IS INDICATED FOR BOTH LOCK AND STOP TABS.
 7. THIS TERMINAL FOR USE IN HOUSING NO'S. 40585-1-5, 40585-3000, 43032-3300, 43032-3400, AND 43032-3500.
 8. TERMINALS FOR USE WITH STRANDED WIRE.
 9. PARTS CONFORM TO CLASS B REQUIREMENTS OF COSMETIC SPECIFICATION PS-45499-002.

STRIP AND CARRIER LAYOUT
SCALE 4:1



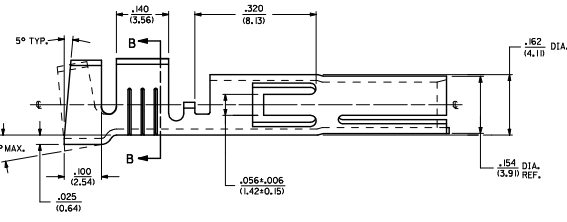
INSULATION CRIMP DETAIL

SECTION B-B



SECTION A-A

2016/07/06



12 AWG TERMINAL SHOWN

QUALITY SYMBOLS	GENERAL TOLERANCES (UNLESS SPECIFIED)		DIMENSION STYLE		SCALE	DESIGN UNITS	THIRD ANGLE PROJECTION
	mm	INCH	IN/MM	DATE			
∇=0	4 PLACES ±---	±---	DRAWN BY	2016/06/24	8:1	INCH	TERMINAL SOCKET .125 (3.18) DIA.
∇=0	3 PLACES ±---	±.005	CHECKED BY	DATE			
∇=0	2 PLACES ±---	±.01	SBR	91/03/08			
∇=0	1 PLACE ±---	±.025	APPROVED BY	DATE	molex		DOCUMENT NO.
∇=0	0 PLACE ±---	±---	FSM1TH	2016/07/06	SD-42825-40**		SHEET NO.
REMOVE OBSOLETE EC NO. 1167204-4896		ANGULAR ±1/2°		SEE CHART		1 OF 1	
DRAFT WHERE APPLICABLE MUST REMAIN WITHIN DIMENSIONS		THIS DRAWING CONTAINS INFORMATION THAT IS PROPRIETARY TO MOLEX INCORPORATED AND SHOULD NOT BE USED WITHOUT WRITTEN PERMISSION					