

Excellent Integrated System Limited

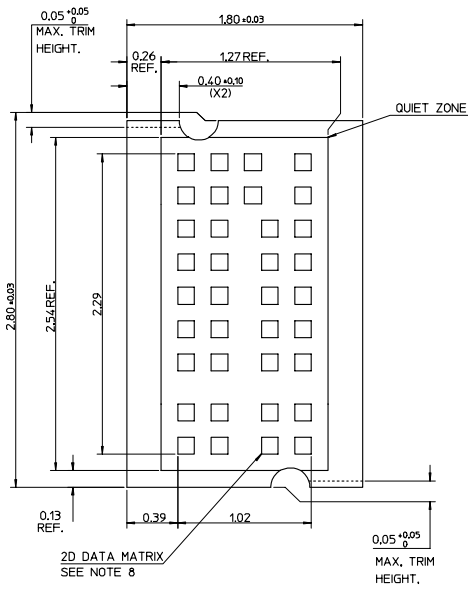
Stocking Distributor

Click to view price, real time Inventory, Delivery & Lifecycle Information:

[Molex Connector Corporation](#)
[0916580020](#)

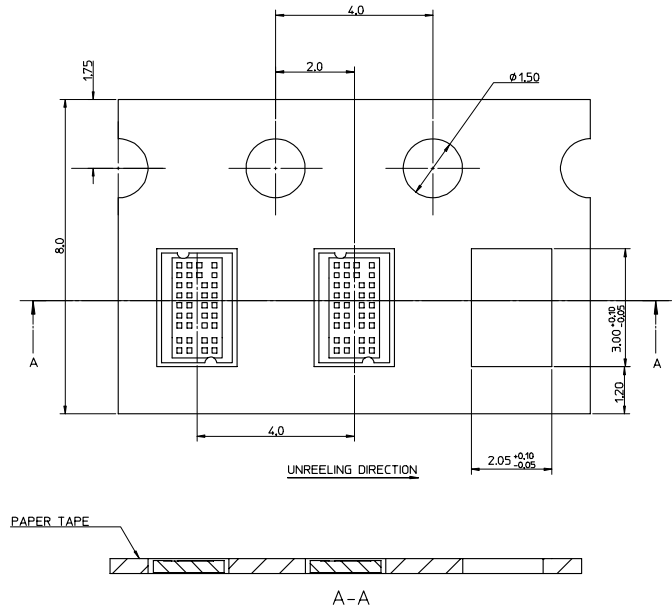
For any questions, you can email us directly:

sales@integrated-circuit.com



MAX BURR HEIGHT 0.03

0.30±0.01



UNREELING DIRECTION

A-A

NOTES:

1. MODULE ID PAD MATERIAL CuNi18Zn20 0.30 REF THK.
2. 2D DATA MATRIX TO BE MARKED ON PAD USING LASER ETCHING.
3. CONTRAST RATIO TO BE 50% MINIMUM.
4. RECOMMENDED PWB PAD DIMENSIONS: 2.95 x 1.95.
5. PAD FLATNESS TO BE 0.1.
6. PARTS TO BE SHIPPED ON REEL. PAPER TAPE TO BE USED AS SHOWN. COVER TAPE TO BE TRANSPARENT POLYESTER.
7. PITCH TOLERANCE OVER ANY 10 PITCHES ±0.20
8. 8 ROWS X 18 COLUMNS, ECC 200.
9. UNIQUE 9 DIGIT SEQUENTIALLY INCREASING NUMBER IS ENCODED INTO DATA MATRIX FORMAT ON EACH PAD. FIRST PAD HAS ENCODED NUMBER *00000001 AND SUBSEQUENT PADS HAVE SEQUENTIALLY INCREASING ENCODED NUMBER. DIGIT ONE (*) IS A UNIQUE CUSTOMER ALPHANUMERIC CHARACTER IDENTIFIER.
10. 2D DATA MATRIX IS TO BE READABLE WITH 'QUADRUS EZ' SCANNER.
11. 4 EMPTY POCKETS ALLOWED ON A REEL.
12. PARTS PER REEL: 8000 PARTS

NOTES:

13. PART NUMBER 916580020 REFERS TO A***** CODE OPTION.
14. CUSTOMER IDENTIFIER 'A' IS RESERVED FOR SAMPLES AND MARKETING PURPOSES ONLY.
15. NEW CUSTOMERS WILL BE ALLOCATED NEW MOLEX PART NUMBERS WITH ASSOCIATED CUSTOMER ALPHANUMERIC CHARACTER IDENTIFIER.

ADD NOTES 13 TO 15 EC NO: E2005-0309 CD/DRAWN/DCARTON 2004/10/29 CHKD: 2004/10/29 APPR/EFOLAN 2004/11/02	QUALITY SYMBOLS	GENERAL TOLERANCES (UNLESS SPECIFIED)		SCALE 10:1	DESIGN UNITS METRIC	THIRD ANGLE PROJECTION	REVISE ON CAD ONLY	
	-0 0	4 PLACES ± --- ± ---	DIMENSION STYLE MM ONLY		TITLE TRACEABILITY PAD			
		3 PLACES ± --- ± ---	DRAWN BY DATE DCARTON 2004/08/26		MATERIAL NO. MOLEX INCORPORATED			
		2 PLACES ± 0.10 ± ---	CHECKED BY DATE EFOLAN 2004/08/26		DOCUMENT NO. SD-91658-010 SHEET NO. 1 OF 1			
1 PLACE ± 0.2 ± ---	ANGULAR ± 2 °		APPROVED BY DATE MWILHITE 2004/08/26		THIS DRAWING CONTAINS INFORMATION THAT IS PROPRIETARY TO MOLEX INCORPORATED AND SHOULD NOT BE USED WITHOUT WRITTEN PERMISSION			
DRAFT WHERE APPLICABLE MUST REMAIN WITHIN DIMENSIONS								