

Excellent Integrated System Limited

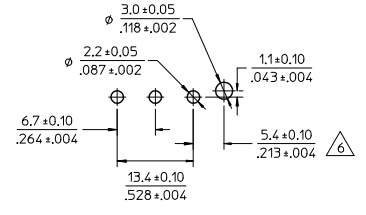
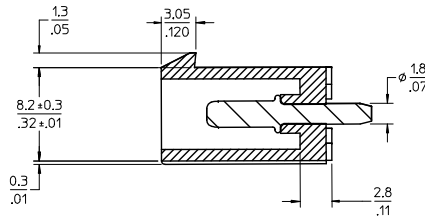
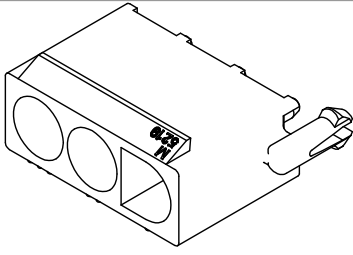
Stocking Distributor

Click to view price, real time Inventory, Delivery & Lifecycle Information:

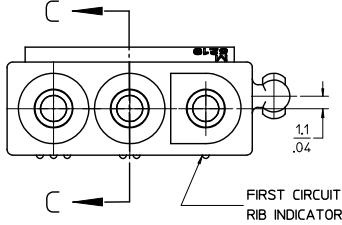
[Molex Connector Corporation](#)
[0039287038](#)

For any questions, you can email us directly:

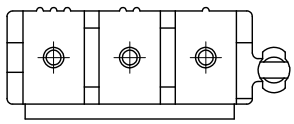
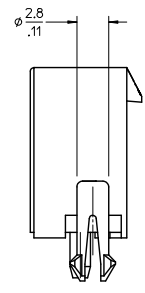
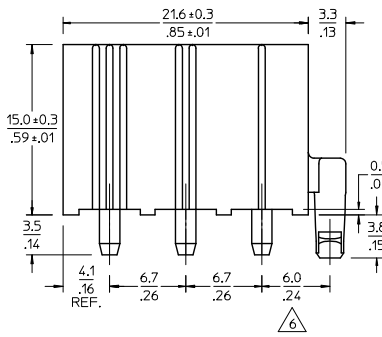
sales@integrated-circuit.com



RECOMMENDED P.C. BOARD HOLE DIM.
SCALE 2:1



- NOTES:
- MATERIAL:
HOUSING: "BLANK" = NYLON 6/6, UL94V-2, COLOR: NATURAL
"201" = NYLON 6/6, UL94V-0, COLOR: NATURAL
TERMINAL: C2700W BRASS
 - FINISH: 0.000003/(0.0000001) MIN. TIN OVERALL OVER
0.000001/(0.0000004) MIN. NICKEL OVERALL
 - PRODUCT SPECIFICATION: PS-3191-003
 - PACKAGING: PK-5219-002
 - MATES WITH: 3191-03R SERIES
 - DIFFERENCE OF DIMENSION IS INTENTIONAL TO PREVENT PART RISING FROM P.C.B.
 - PARTS CONFORM TO CLASS 'B' REQUIREMENTS OF COSMETIC SPECIFICATION PS-45499-002.



ENG. NO.	ORDER NO.	PIN STYLE	HSG. MATERIAL	PIN PLATING
5219-03A	15-31-1036	SOLID	94V-2 NYLON	TIN
5219-03B	15-31-3036	HOLLOW	94V-2 NYLON	TIN
5219-03A-201	39-28-7038	SOLID	94V-0 NYLON	TIN

ADD P/N 15-31-3036 EC NO: UCP2014-1950 DRAWN BY: ZHANGJELIANG 2013/12/16 CHKD: BELL 2013/12/16 APPR: SMITH 2013/12/19 DESCRIPTION: CONN HEADER 3POS VERT REV: N5	QUALITY SYMBOLS	GENERAL TOLERANCES (UNLESS SPECIFIED)	DIMENSION STYLE	SCALE	DESIGN UNITS	THIRD ANGLE PROJECTION
	▽=0 ▽=0	4 PLACES ± --- ± --- 3 PLACES ± --- ± .005 2 PLACES ± 0.13 ± .010 1 PLACE ± 0.25 ± --- ANGULAR ± 1/2°	MM/IN	4:1	METRIC	TITLE: NEW INTERNATIONAL CONN. HEADER AND ASSY. MOLEX INCORPORATED
	DRAFT WHERE APPLICABLE MUST REMAIN WITHIN DIMENSIONS	DRAWN BY: TASAKAWA 1995/11/18 CHECKED BY: HIRAMOT 1995/11/18 APPROVED BY: FUKUSHI M 1995/11/18	SEE CHART THIS DRAWING CONTAINS INFORMATION THAT IS PROPRIETARY TO MOLEX INCORPORATED AND SHOULD NOT BE USED WITHOUT WRITTEN PERMISSION	MATERIAL NO. DOCUMENT NO.	SHEET NO. 1 OF 1	