

## Excellent Integrated System Limited

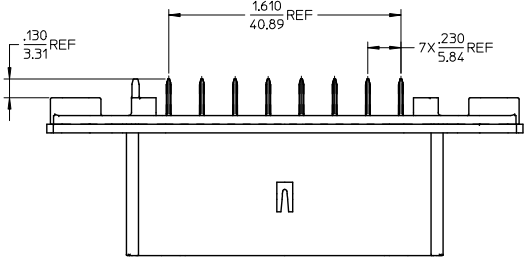
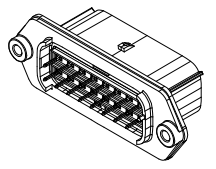
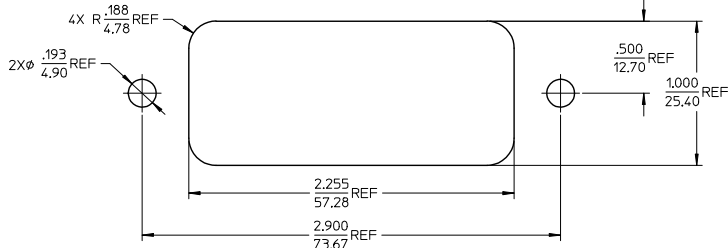
Stocking Distributor

Click to view price, real time Inventory, Delivery & Lifecycle Information:

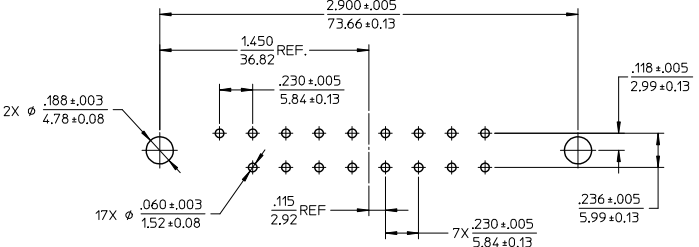
[Molex Connector Corporation](#)  
[0194280016](#)

For any questions, you can email us directly:

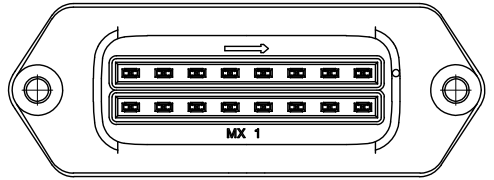
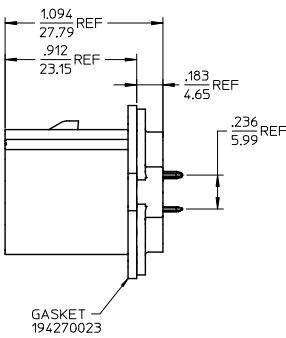
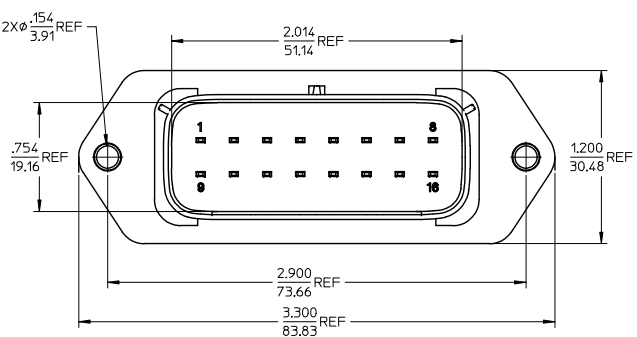
[sales@integrated-circuit.com](mailto:sales@integrated-circuit.com)



RECOMMENDED PANEL CUTOUT  
MAX PANEL THICKNESS .080/2.03



RECOMMENDED PCB LAYOUT  
COMPONENT VIEW  
TOLERANCES ARE NON-ACCUMULATIVE



- NOTES:
- MATERIALS:  
HOUSING: POLYESTER (PBT), GLASS FILLED, UL94 V-0,  
COLOR: BLACK  
TERMINALS: COPPER ALLOY
  - FINISHES: 1. TIN ONLY: 100µN TIN OVER 50µN NICKEL  
2. TIN/GOLD: 30µN SELECT GOLD (CONTACT MATING AREA),  
100µN SELECT TIN (PCB TAIL AREA) OVER 50µN NICKEL OVERALL.
  - PRODUCT SPECIFICATION: PS-19428-001.
  - PACKAGING SPECIFICATION: PK-19428-002.
  - MATES WITH: 19418 SERIES RECEPTACLE ASSEMBLIES.

PRODUCTION RELEASE EC NO: E1C2005-0213 DRAWN: JPWL I CK 2005/06/16 CHECKED: JPWL I CK 2005/06/14 APPROVED: RDEROSS 2005/06/14	QUALITY SYMBOLS ▽=0 ▽=0	GENERAL TOLERANCES (UNLESS SPECIFIED)	DIMENSION STYLE		SCALE 2:1	TITLE 16-WAY STRAIGHT HEADER ASSEMBLY, SHORT VERSION	MATERIAL NUMBER	TERMINAL PLATING
			mm	INCH			194280016	TIN
		4 PLACES ± .015	DRAWN BY BRUPERT		DATE 04/06/16	MATERIAL NUMBER 194280032	SELECT GOLD/TIN	
		3 PLACES ± .015	CHECKED BY JPWL I CK		DATE 04/06/16		THIRD ANGLE PROJECTION	
		2 PLACES ± 0.38	APPROVED BY RDEROSS		DATE 04/06/16	MOLEX INCORPORATED		
		1 PLACE ± .015	MATERIAL NO. SEE CHART		DOCUMENT NO. SD-19428-008		SHEET NO. 1 OF 1	
		ANGULAR ± 1°	DRAFT WHERE APPLICABLE MUST REMAIN WITHIN DIMENSIONS		THIS DRAWING CONTAINS INFORMATION THAT IS PROPRIETARY TO MOLEX INCORPORATED AND SHOULD NOT BE USED WITHOUT WRITTEN PERMISSION			