

Excellent Integrated System Limited

Stocking Distributor

Click to view price, real time Inventory, Delivery & Lifecycle Information:

[Molex Connector Corporation](#)
[0340620023](#)

For any questions, you can email us directly:

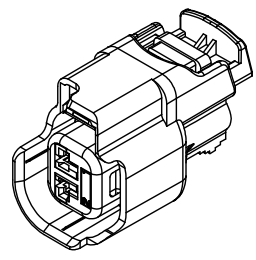
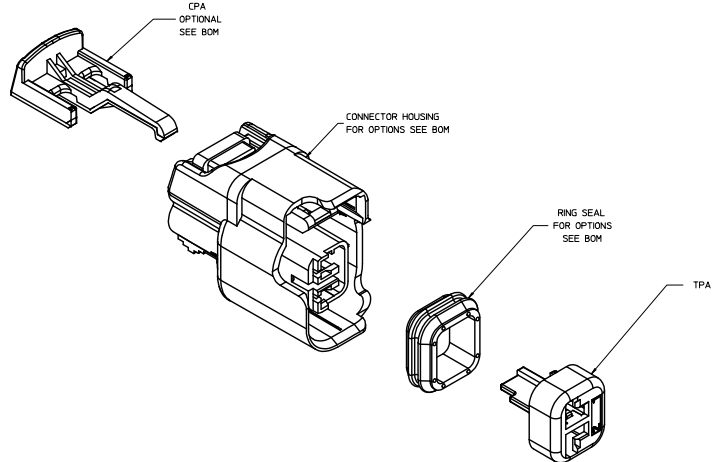
sales@integrated-circuit.com

20 19 18 17 16 15 14 13 12 11 10 9 8 7 6 5 4 3 2 1

TABLE OF CONTENTS	
SHEET NO.	SHEET DESCRIPTION
1	NOTES
2, 3	CONFIGURATIONS
4	RECEPTACLE CONNECTOR ASSEMBLY
5	MOLEX INTERFACE

NOTES: VALID UNLESS OTHERWISE SPECIFIED

1. GENERAL:
 - a. APPLICATION SPECIFICATION SEE: AS-34062-000
 -CONTAINS: PRODUCT INTRODUCTION, PRODUCT SUMMARY, CONNECTOR ASSEMBLY, PACKAGING INFORMATION, CONNECTOR MATING, SERVICE INSTRUCTIONS, ELECTRICAL CONTINUITY CHECKING, CRIMPING AND TROUBLESHOOTING.
 -DESIGNED TO MATE WITH DEVICE CONNECTION AS SPECIFIED IN DRAWING EWCAP 150-S-002-1-Z01, AVAILABLE AT <http://ewcapi.com/learn/learn.asp>.
 -DESIGNED TO MATE WITH BLADE SEALED ASSEMBLY AS SPECIFIED IN DRAWING: SD-34675-001
 -ASSEMBLY SHIPPED WITH TPA IN PRE-LOCK (SEE TPA PRE-LOCK VIEW IN SHEET 4)
 - b. PRODUCT SPECIFICATION SEE: PS-34062-000
 (CONTAINS SCOPE, PRODUCT DESCRIPTION, INTEGRAL COMPONENTS AND ACCESSORIES, APPLICABLE DOCUMENTS AND SPECIFICATIONS, RATINGS, PERFORMANCE, PACKAGING, GAUGE AND FIXTURES, AND OTHER INFORMATION.)
 - c. PACKAGING SPECIFICATION PER MOLEX DRAWING: PK-30907-879
 - d. PARTS MUST BE IN COMPLIANCE TO MOLEX CHEMICAL SUBSTANCES FOR PRODUCTS AND PACKAGING SPECIFICATION: DCHS-699000-301
 - e. DATA MUST BE SUBMITTED UNDER THE MOLEX PART NUMBER TO MDS (COMPANY ID#13255)
2. DESIGN - MATERIALS:
 - a. SEE BOM TABLE IN SD-34062-004
3. DESIGN - GEOMETRY:
 - a. THIS IS A 100% CAD GENERATED PART. THE CAD MATHEMATICAL DATA IS THE MASTER FOR THIS PART. FOR DIMENSIONAL OR ANY INFORMATION NOT SHOWN ON THIS DRAWING, ANALYZE THE CAD MODEL
 - b. GEOMETRIC DIMENSIONS AND TOLERANCES PER ASME Y14.5M - 1994
 - c. EDGES AND UNDIMENSIONED DETAILS PER ISO13715
 - d. CORNERS SHOWN AS SHARP TO BE R.02 MAX.
 - e. LETTERING SHALL BE 0.15 MAX RAISED IN 0.25 MAX RECESS PAD. THIS INCLUDES RECYCLING CODE, CAVITY ID, VENDOR IDENTIFICATION, AND CUSTOMER MATERIAL NUMBER.
 - f. VISUAL DEFECTS SHALL MEET COSMETIC STANDARD PS-45499-002 (Class B)
 - g. LASER MARKING: TBD



INSPECTION NUMBER LOG
 LAST NUMBER USED: ICD 64
 ADDED: ICD 64
 REMOVED: ICD 7, ICD 8, ICD 9,
 ICD 18, ICD 19, ICD 20, ICD 41, ICD 42

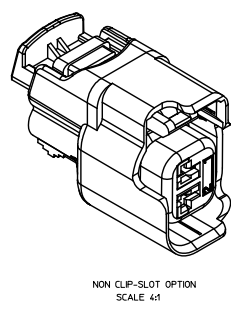
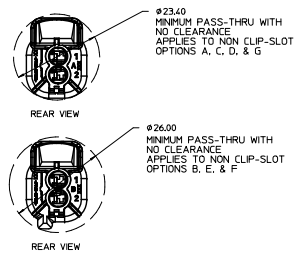
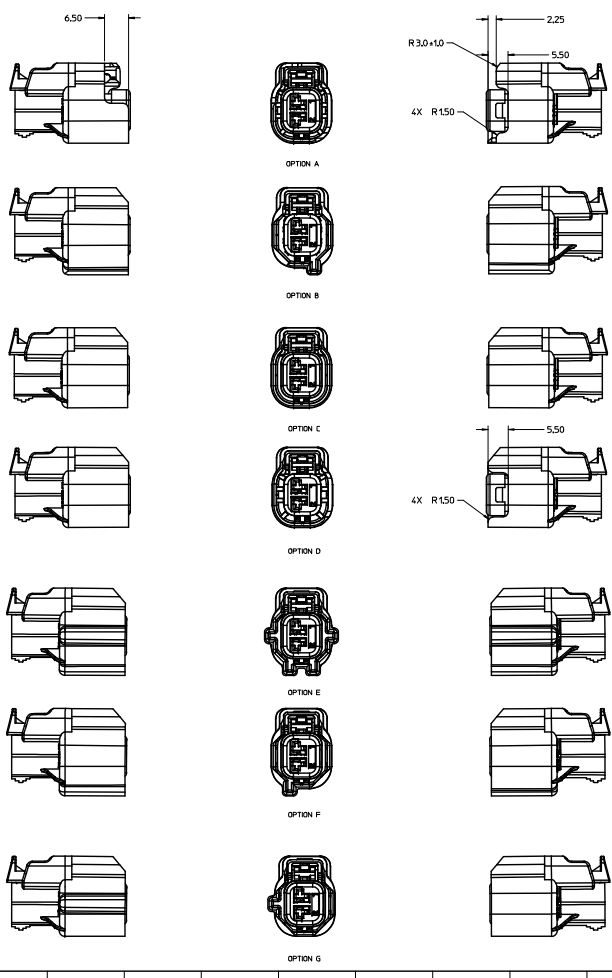
REVISIONS
 J18 ADDED DIM ICD 64

REVISIONS	DESCRIPTION	SCALE	DESIGN UNITS	THIRD ANGLE PROJECTION
J18	ADDED DIM ICD 64			

QUALITY SYMBOLS	GENERAL TOLERANCES (UNLESS SPECIFIED)	DIMENSION STYLE	MM ONLY	TITLE
∇=0	4 PLACES +--- +---	DRAWN BY	DATE	MX150 2 WAY CABLE SEAL RECEPTACLE CONN. SYSTEM (5.0MM PITCH)
∇=0	3 PLACES +--- +---	CHECKED BY	DATE	
∇=0	2 PLACES ±0.10 ±---	APPROVED BY	DATE	
∇=0	1 PLACE ±0.3 ±---			
∇=0	0 PLACE ± ±---			
	ANGULAR ± 3 °	MATERIAL NO.	SEE NOTE 2a.	DOCUMENT NO.
	DRAFT WHERE APPLICABLE MUST REMAIN WITHIN DIMENSIONS	SIZE	D	SD-34062-002

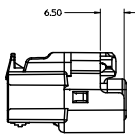
19 18 17 16 15 14 13 12 11 10 9 8 7 6 5 4 3 2 1

SHEET DESCRIPTION
CONFIGURATIONS

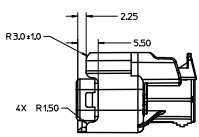


ENTER DESCRIPTION EC NO. VAJ204-1241 DRAWN BY: ANANDKUMAR/20/06/07/19 CHKD: J18 APPR: MISHRA/20/06/07/21 REV:	QUALITY SYMBOLS ∇=0 ∇=0 ∇=0	GENERAL TOLERANCES (UNLESS SPECIFIED) <table border="1"> <thead> <tr> <th></th> <th>mm</th> <th>INCH</th> </tr> </thead> <tbody> <tr> <td>4 PLACES</td> <td>±0.1</td> <td>±0.004</td> </tr> <tr> <td>3 PLACES</td> <td>±0.15</td> <td>±0.006</td> </tr> <tr> <td>2 PLACES</td> <td>±0.30</td> <td>±0.012</td> </tr> <tr> <td>1 PLACE</td> <td>±0.50</td> <td>±0.020</td> </tr> <tr> <td>0 PLACE</td> <td>±0.75</td> <td>±0.030</td> </tr> </tbody> </table> ANGULAR ± 3° DRAFT WHERE APPLICABLE MUST REMAIN WITHIN DIMENSIONS		mm	INCH	4 PLACES	±0.1	±0.004	3 PLACES	±0.15	±0.006	2 PLACES	±0.30	±0.012	1 PLACE	±0.50	±0.020	0 PLACE	±0.75	±0.030	DIMENSION STYLE MM ONLY DRAWN BY: DATE KCUNNINGHAM 2011/11/08 CHECKED BY: DATE MWANSLAMBROU 1/26/2012 APPROVED BY: DATE	SCALE 2:1 DESIGN UNITS METRIC THIRD ANGLE PROJECTION	TITLE MX150 2 WAY CABLE SEAL RECEPTACLE CONN. SYSTEM (5.0MM PITCH) molex DOCUMENT NO. SD-34062-002 SHEET NO. 2 OF 5
		mm	INCH																				
	4 PLACES	±0.1	±0.004																				
	3 PLACES	±0.15	±0.006																				
2 PLACES	±0.30	±0.012																					
1 PLACE	±0.50	±0.020																					
0 PLACE	±0.75	±0.030																					
MATERIAL NO. SEE NOTE 2a.	THIS DRAWING CONTAINS INFORMATION THAT IS PROPRIETARY TO MOLEX INCORPORATED AND SHOULD NOT BE USED WITHOUT WRITTEN PERMISSION																						
DRAFT WHERE APPLICABLE MUST REMAIN WITHIN DIMENSIONS																							
THIS DRAWING CONTAINS INFORMATION THAT IS PROPRIETARY TO MOLEX INCORPORATED AND SHOULD NOT BE USED WITHOUT WRITTEN PERMISSION																							

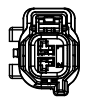
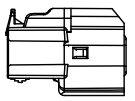
SHEET DESCRIPTION
CONFIGURATIONS



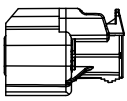
OPTION A WCLP-SLOT



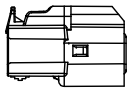
#25.50
MINIMUM PASS-THRU WITH
NO CLEARANCE
APPLIES TO CLIP-SLOT
OPTIONS A, C AND D



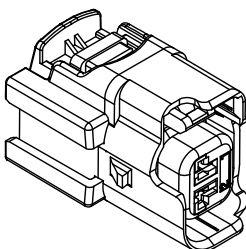
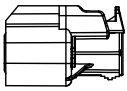
OPTION B WCLP-SLOT



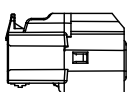
#26.00
MINIMUM PASS-THRU WITH
NO CLEARANCE
APPLIES TO CLIP-SLOT
OPTION B



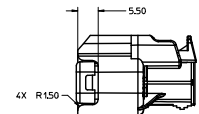
OPTION C WCLP-SLOT



CLIP-SLOT OPTION
SCALE 4:1



OPTION D WCLP-SLOT



*WITH CLIP-SLOT CONFIGURATIONS
DO NOT MEET THE USCAR PACKAGING FRAME REQUIREMENTS

ENTER DESCRIPTION EC NO. UAL2006-1241 DRAWN BY: DORNAJIBORSKI 20/02/19 CHECKED: MANSOURI 20/02/19 APPROVED BY: MANSOURI 20/02/19 DATE: 20/02/19	QUALITY SYMBOLS ∇=0 ∇=0 ∇=0		GENERAL TOLERANCES (UNLESS SPECIFIED) mm INCH 4 PLACES ± 0.15 ± 0.005 3 PLACES ± 0.25 ± 0.010 2 PLACES ± 0.50 ± 0.020 1 PLACE ± 1.00 ± 0.040 0 PLACE ± 1.50 ± 0.060		DIMENSION STYLE MM ONLY DRAWN BY: KUNNINGHAM 2011/11/08 CHECKED BY: DATE APPROVED BY: DATE		SCALE 2:1 DESIGN UNITS METRIC		THIRD ANGLE PROJECTION	
	ANGULAR ± 30° DRAFT WHERE APPLICABLE MUST REMAIN WITHIN DIMENSIONS		MATERIAL NO. SEE NOTE 2a. SIZE D THIS DRAWING CONTAINS INFORMATION THAT IS PROPRIETARY TO MOLEX INCORPORATED AND SHOULD NOT BE USED WITHOUT WRITTEN PERMISSION		TITLE MX150 2 WAY CABLE SEAL RECEPTACLE CONN. SYSTEM (5.0MM PITCH)		DOCUMENT NO. SD-34062-002		SHEET NO. 3 OF 5	
	molex									
	*WITH CLIP-SLOT CONFIGURATIONS DO NOT MEET THE USCAR PACKAGING FRAME REQUIREMENTS									

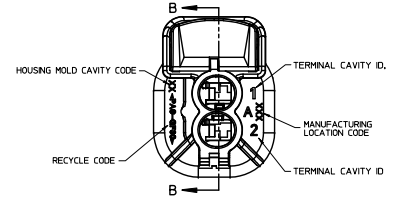
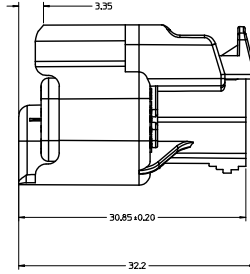
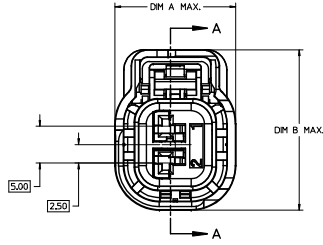
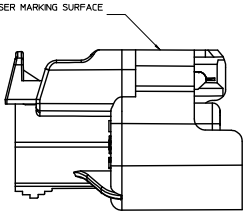
SHEET DESCRIPTION

RECEPTACLE CONNECTOR ASSEMBLY

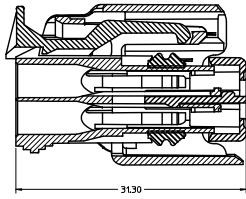
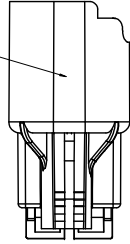
CHARTED DIMENSIONS

CONFIGURATIONS	DIMENSIONS	
	A	B
OPTIONS A, C, D	16.6	22.0
OPTION B	16.6	23.9
OPTION E	20.2	23.9
OPTION F	16.6	23.9
OPTION G	16.4	22.0
OPTIONS A, C, D W/CLIP-SLOT	19.2	22.0
OPTION B W/CLIP-SLOT	19.2	23.9

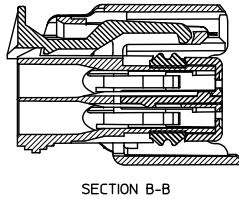
OPTIONAL LASER MARKING SURFACE
SEE NOTE 3g



OPTIONAL LASER MARKING SURFACE
SEE NOTE 3g

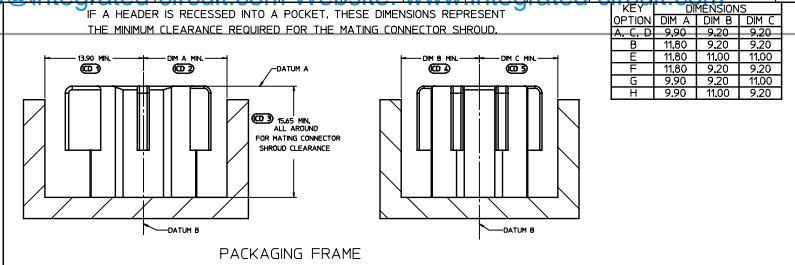
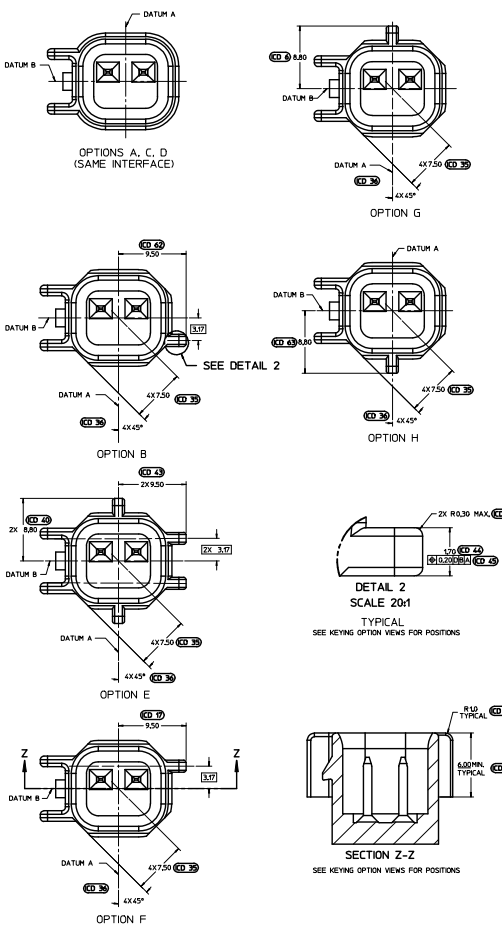


TPA SHOWN IN THE
PRE-STAGED POSITION
SECTION A-A

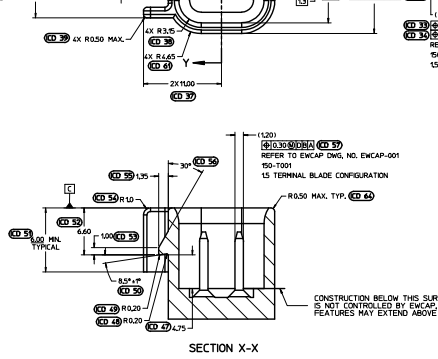
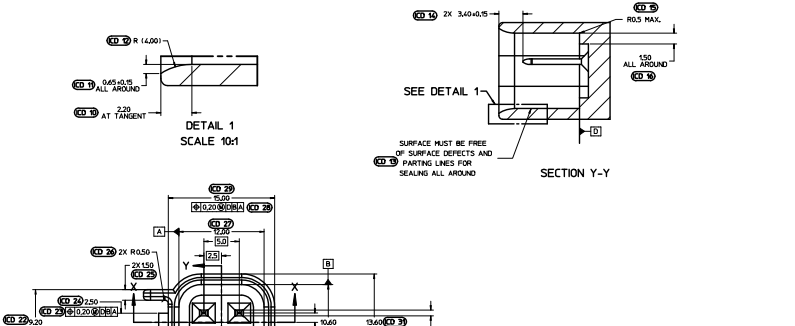
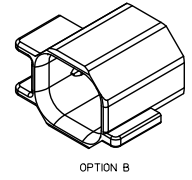


SECTION B-B
TPA SHOWN IN
FINAL-LOCK POSITION

ENTER DESCRIPTION EC NO. VAL2016-1241 DRAWN: WANSIAMBROU / 2016/07/19 CHKD: [blank] J18 APPR: [blank] / 2016/07/22 REV: [blank]	QUALITY SYMBOLS ∇=0 ∇=0 ∇=0	GENERAL TOLERANCES (UNLESS SPECIFIED) mm INCH 4 PLACES ± 0.15 ± 0.006 3 PLACES ± 0.20 ± 0.008 2 PLACES ± 0.30 ± 0.012 1 PLACE ± 0.3 ± 0.012 0 PLACE ± 0.3 ± 0.012 ANGULAR ± 3° DRAFT WHERE APPLICABLE MUST REMAIN WITHIN DIMENSIONS	DIMENSION STYLE MM ONLY DRAWN BY DATE KCUNNINGHAM 2011/11/08 CHECKED BY DATE WANSIAMBROU 1/26/2012 APPROVED BY DATE	SCALE 4:1 DESIGN UNITS METRIC THIRD ANGLE PROJECTION	TITLE MX150 2 WAY CABLE SEAL RECEPTACLE CONN. SYSTEM (5.0MM PITCH) molex MATERIAL NO. SEE NOTE 2a. DOCUMENT NO. SD-34062-002 SHEET NO. 4 OF 5
	THIS DRAWING CONTAINS INFORMATION THAT IS PROPRIETARY TO MOLEX INCORPORATED AND SHOULD NOT BE USED WITHOUT WRITTEN PERMISSION				
	SEE NOTE 2a.				
	INCORPORATED AND SHOULD NOT BE USED WITHOUT WRITTEN PERMISSION				



KEY	DIMENSIONS		
	OPTION	DIM A	DIM B
A, C, D	9.90	9.20	9.20
B	11.80	9.20	9.20
E	11.80	11.00	11.00
F	11.80	9.20	9.20
G	9.90	9.20	11.00
H	9.90	11.00	9.20



- NOTES: UNLESS OTHERWISE SPECIFIED
- ALL DIMENSIONS SHOWN IN MILLIMETERS.
 - DIMENSIONING AND TOLERANCING PER ASME Y14.5M-1994
 - 0.25 RADI ON ALL CORNERS SHOWN SHARP.
 - UNSPECIFIED RADI: 0.25 EXCEPT AS NOTED.
 - STANDARD COLORS FOR POLARIZATION (SEE CHART). DEVIATION REQUIRES APPROVAL OF AUTHORIZED PERSON.
 - REFER TO SAE/USCAR 12 CONNECTOR GUIDELINES FOR ADDITIONAL REQUIREMENTS.
 - EXCEPT WHERE NOTED, DRAFT ON OUTSIDE SURFACES IS PERMISSIBLE WITHIN TOLERANCE.
 - Symbol indicates draft direction.
 - FOR TERMINAL MATERIAL, DIMENSIONAL, AND COATING REQUIREMENTS AND ANY BLADE TERMINAL DESIGN INFORMATION NOT SHOWN ON THIS DRAWING SEE EWCAP DWG. NO. EWCAP-001
 - A FULL SHROUD ON THE MATING CONNECTOR IS REQUIRED TO ENSURE THAT THE CONNECTOR-HEADER POLARIZATION FEATURES (OPTIONS A THRU H) WILL FUNCTION. THE FULL SHROUD ALSO PREVENTS SCOOP DAMAGE TO THE HEADER PINS. REFER TO SAE/USCAR-12 CONNECTOR DESIGN GUIDE LINES FOR ADDITIONAL INFORMATION.
 - REFER TO USCAR/EWCAP PART LIST AS FOUND ON WEBSITE <http://www.uscarteams.org>
 - THIS IS A 100% CAD GENERATED PART. THE CAD MATHEMATICAL DATA IS THE MASTER FOR THIS PART. FOR DIMENSIONAL OR ANY INFORMATION NOT SHOWN ON THIS DRAWING, ANALYZE THE CAD MODEL.

A, C, D	BLACK	A	
B	LIGHT GRAY	B	
E	BLACK	E	NOT RECOMMENDED
F	LIGHT GRAY	D	MATING CONNECTOR IS UNIVERSAL
G	BLACK	C	
H	LIGHT GRAY	F	
OPTION	COLOR	SIMILAR TO AFL DRAWING R63461 (OPTION GEOMETRY IDENTICAL)	COMMENTS

QUALITY SYMBOLS	GENERAL TOLERANCES (UNLESS SPECIFIED)		DIMENSION STYLE		SCALE	DESIGN UNITS	THIRD ANGLE PROJECTION
	mm	INCH	MM ONLY	DATE			
∇=0	4 PLACES ±	---	---	---	S1	METRIC	☑
∇=0.05	3 PLACES ±	---	---	---			
∇=0.1	2 PLACES ±	0.30	---	---			
∇=0.2	1 PLACE ±	0.3	---	---			
∇=0	0 PLACE ±	---	---	---			

ENTER DESCRIPTION
 REF. NO. LADON-024
 DATE: 2011/07/22
 APPROVED BY: [Signature]

QUALITY SYMBOLS
 ∇=0
 ∇=0.05
 ∇=0.1
 ∇=0.2
 ∇=0

GENERAL TOLERANCES (UNLESS SPECIFIED)
 4 PLACES ±
 3 PLACES ±
 2 PLACES ±
 1 PLACE ±
 0 PLACE ±

DIMENSION STYLE
 MM ONLY

SCALE
 S1

DESIGN UNITS
 METRIC

THIRD ANGLE PROJECTION
 ☑

DRAWN BY: KUNNINGHAM
 DATE: 2011/11/08
 CHECKED BY: DATE
 APPROVED BY: DATE

TITLE
 MX150 2 WAY CABLE SEAL RECEPTACLE CONN. SYSTEM (5.0MM PITCH)

MATERIAL NO.
 N/A

DOCUMENT NO.
 SD-34062-002

SHEET NO.
 5 OF 5

THIS DRAWING CONTAINS INFORMATION THAT IS PROPRIETARY TO MOLEX INCORPORATED AND SHOULD NOT BE USED WITHOUT WRITTEN PERMISSION