

Excellent Integrated System Limited

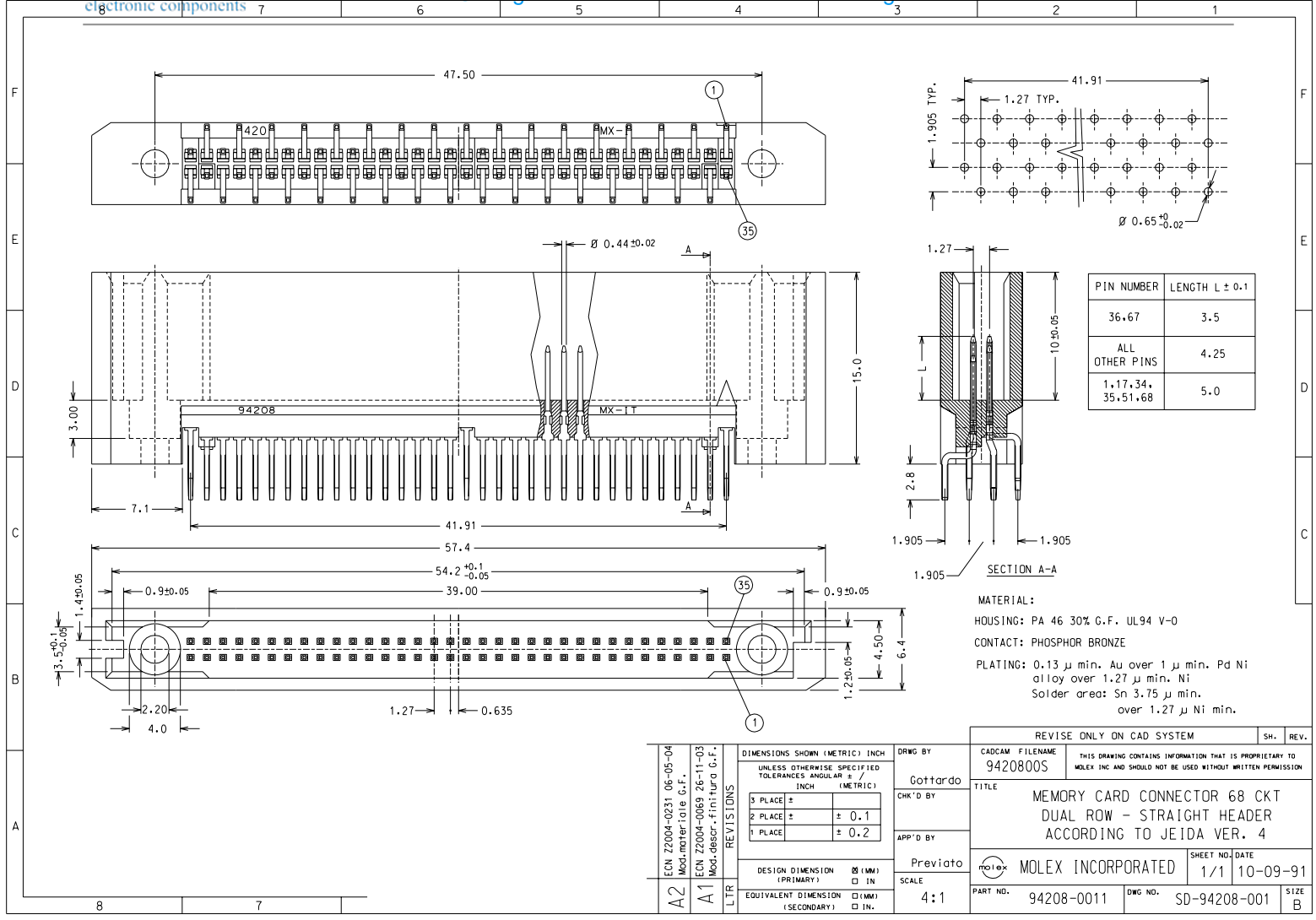
Stocking Distributor

Click to view price, real time Inventory, Delivery & Lifecycle Information:

[Molex Connector Corporation](#)
[0942080011](#)

For any questions, you can email us directly:

sales@integrated-circuit.com



PIN NUMBER	LENGTH L ± 0.1
36-67	3.5
ALL OTHER PINS	4.25
1,17,34,35,51,68	5.0

MATERIAL:
 HOUSING: PA 46 30% G.F. UL94 V-0
 CONTACT: PHOSPHOR BRONZE
 PLATING: 0.13 μ min. Au over 1 μ min. Pd Ni alloy over 1.27 μ min. Ni
 Solder area: Sn 3.75 μ min. over 1.27 μ Ni min.

ECN Z2004-0231 06-05-04 Mod.material G.F. ECN Z2004-0069 26-11-03 Mod.descr.-Finitura G.F. LTR	DIMENSIONS SHOWN (METRIC) INCH UNLESS OTHERWISE SPECIFIED TOLERANCES ANGULAR \pm / INCH (METRIC)	DRWG BY Gattardo	REVISE ONLY ON CAD SYSTEM		SH. REV.						
	<table border="1"> <tr> <td>3 PLACE \pm</td> <td></td> </tr> <tr> <td>2 PLACE \pm</td> <td>± 0.1</td> </tr> <tr> <td>1 PLACE \pm</td> <td>± 0.2</td> </tr> </table>	3 PLACE \pm		2 PLACE \pm	± 0.1	1 PLACE \pm	± 0.2	DESIGN DIMENSION (PRIMARY) <input type="checkbox"/> (MM) <input type="checkbox"/> IN EQUIVALENT DIMENSION (SECONDARY) <input type="checkbox"/> (MM) <input type="checkbox"/> IN.	CHK'D BY APP'D BY SCALE 4:1	CAD/CAM FILENAME 9420800S	
3 PLACE \pm											
2 PLACE \pm	± 0.1										
1 PLACE \pm	± 0.2										
TITLE MEMORY CARD CONNECTOR 68 CKT DUAL ROW - STRAIGHT HEADER ACCORDING TO JEIDA VER. 4			SHEET NO. DATE 1/1 10-09-91		SIZE B						
PART NO. 94208-0011			DWG NO. SD-94208-001								