

## Excellent Integrated System Limited

Stocking Distributor

Click to view price, real time Inventory, Delivery & Lifecycle Information:

[Molex Connector Corporation](#)

[0011241116](#)

For any questions, you can email us directly:

[sales@integrated-circuit.com](mailto:sales@integrated-circuit.com)

This document was generated on 04/06/2016

**PLEASE CHECK WWW.MOLEX.COM FOR LATEST PART INFORMATION**

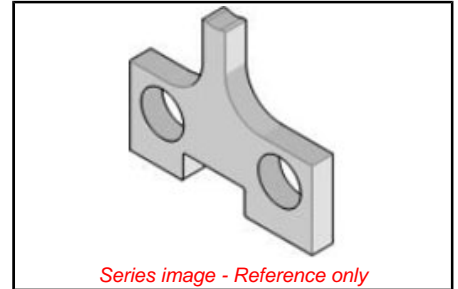
**Part Number:** [0011241116](#)  
**Status:** **Active**  
**Description:** Insulation Anvil

**Documents:**  
[RoHS Certificate of Compliance \(PDF\)](#)

<b>General</b>	
Product Family	Application Tooling
Series	T9999
Comments	See Tooling Specification (PDF) Above
Function	Cutter
Geographic Area	Global
Level of Automation	Manual
More Detailed Tech Information	<a href="mailto:applicationtooling@molex.com">applicationtooling@molex.com</a>
Product Name	N/A
Survey	<a href="http://www.molex.com/review/apptool_survey.html">www.molex.com/review/apptool_survey.html</a>
Tool Type	Anvil
UPC	800753608399
Warranty Disclaimer	CAUTION: Molex tooling crimp specifications are valid only when used with Molex terminals and tooling manufactured by Molex and sold by Molex or authorized distributors ("Molex Tooling"). When using tooling other than Molex Tooling with Molex specific connector systems listed in our ATS documents, the Molex tooling qualification does not apply and the responsibility for full qualification of the connector system is that of the customer. Molex accepts no liability for connector performance or tooling support where tooling other than Molex Tooling is used or where Molex Tooling is modified.

<b>Material Info</b>	
Old Part Number	6117 08

<b>Reference - Drawing Numbers</b>	
Application Tooling Documents	ATS-STANDARD-PARTS



<b>EU ELV</b>	
<b>Not Reviewed</b>	

<b>EU RoHS</b>	<b>China RoHS</b>
----------------	-------------------

<b>Not Reviewed</b>	
<b>REACH SVHC</b>	
Not Reviewed	
<b>Halogen-Free Status</b>	
<b>Not Reviewed</b>	

**Need more information on product environmental compliance?**

Email [productcompliance@molex.com](mailto:productcompliance@molex.com)  
Please visit the [Contact Us](#) section for any non-product compliance questions.

China ROHS	Not Reviewed
ELV	Not Reviewed

**Search Parts in this Series**  
[T9999 Series](#)

**Use With**  
[11-40-2265](#) , [11-40-3012](#) , [11-40-3100](#) ,  
[11-40-3130](#) , [11-40-3267](#)

This document was generated on 04/06/2016

**PLEASE CHECK WWW.MOLEX.COM FOR LATEST PART INFORMATION**