



Excellent Integrated System Limited

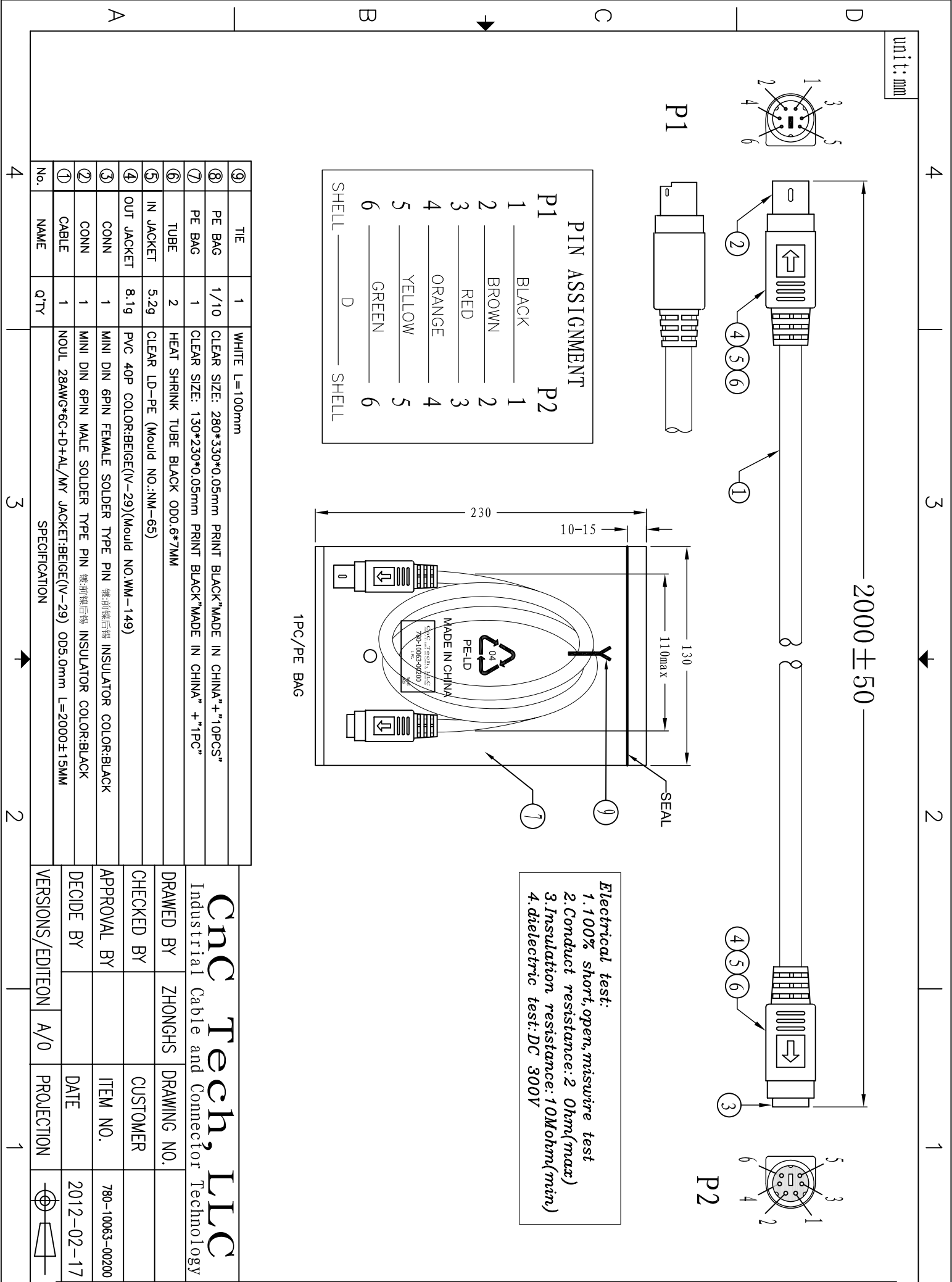
Stocking Distributor

Click to view price, real time Inventory, Delivery & Lifecycle Information:

[CNC Tech](#)
[780-10063-00200](#)

For any questions, you can email us directly:

sales@integrated-circuit.com



PIN ASSIGNMENT	
P1	P2
1	1
2	2
3	3
4	4
5	5
6	6
SHELL	D
	SHELL

Electrical test:
 1. 100% short, open, miswire test
 2. Conduct resistance: 2 Ohm(max)
 3. Insulation resistance: 10Mohm(min)
 4. dielectric test: DC 300V

⑨	TIE	1	WHITE L=100mm
⑧	PE BAG	1/10	CLEAR SIZE: 280*330*0.05mm PRINT BLACK"MADE IN CHINA"+ "10PCS"
⑦	PE BAG	1	CLEAR SIZE: 130*230*0.05mm PRINT BLACK"MADE IN CHINA" + "1PC"
⑥	TUBE	2	HEAT SHRINK TUBE BLACK ODO.6*7MM
⑤	IN JACKET	5.29	CLEAR LD-PE (Mould NO.:NM-65)
④	OUT JACKET	8.19	PVC 40P COLOR:BEIGE(V-29)(Mould NO.WM-149)
③	CONN	1	MINI DIN 6PIN FEMALE SOLDER TYPE PIN 鍍前鍍后轉 INSULATOR COLOR:BLACK
②	CONN	1	MINI DIN 6PIN MALE SOLDER TYPE PIN 鍍前鍍后轉 INSULATOR COLOR:BLACK
①	CABLE	1	NOUL 28AWG*6C+D+AL/MY JACKET:BEIGE(V-29) ODS.0mm L=2000±15MM
No.	NAME	Q'ty	SPECIFICATION

CNC Tech, LLC			
Industrial Cable and Connector Technology			
DRAWN BY	ZHONGHS	DRAWING NO.	
CHECKED BY		CUSTOMER	
APPROVAL BY		ITEM NO.	780-10063-00200
DECIDE BY		DATE	2012-02-17
VERSIONS/EDITEON	A/0	PROJECTION	