

Excellent Integrated System Limited

Stocking Distributor

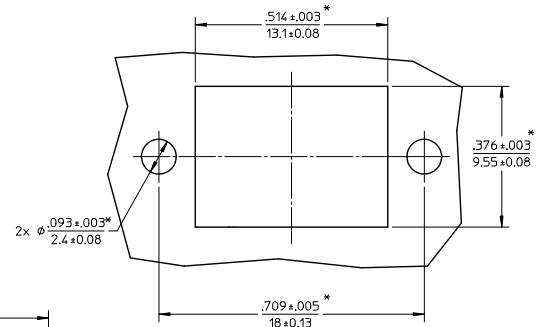
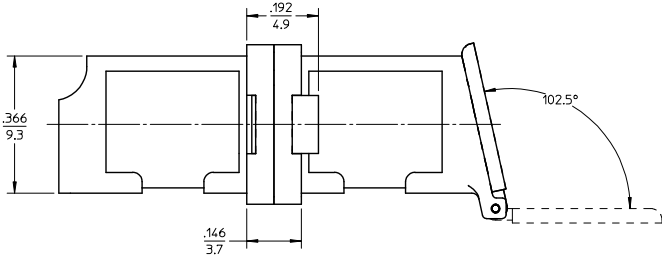
Click to view price, real time Inventory, Delivery & Lifecycle Information:

[Molex Connector Corporation](#)
[1061271890](#)

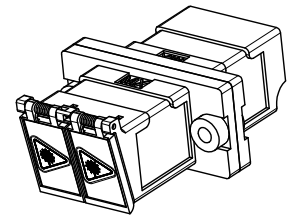
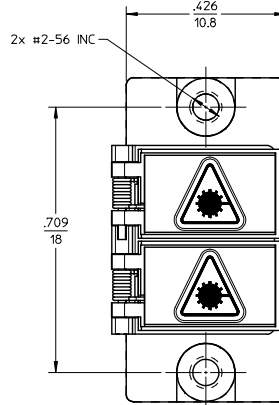
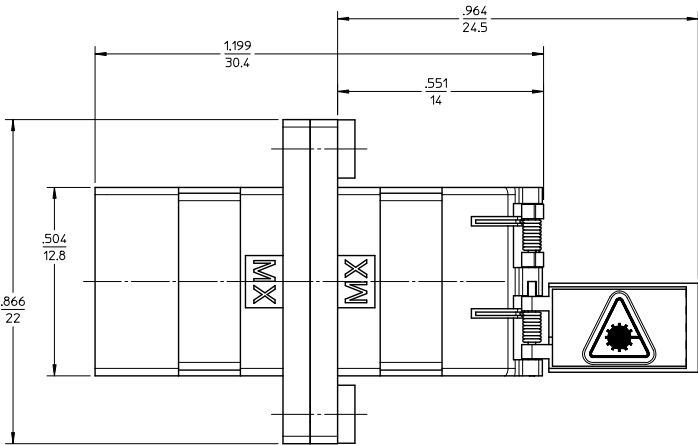
For any questions, you can email us directly:

sales@integrated-circuit.com

10 9 8 7 6 5 4 3 2 1



RECOMMENDED MOUNTING PATTERN



- NOTES:
1. ALL DIMENSIONS ARE FOR REFERENCE ONLY, EXCEPT WHERE MARKED WITH A *.
 2. DUST CAPS NOT SHOWN.

ENTER DESCRIPTION EC NO: MF2010-0005 DRAWN BY: DRANKPEVNER CHKD: 2009/07/22 APPR: GUMIN 2009/07/23	QUALITY SYMBOLS ▽=0 ▽=0	GENERAL TOLERANCES (UNLESS SPECIFIED)		DIMENSION STYLE IN/MM	SCALE 4:1	DESIGN UNITS INCH	THIRD ANGLE PROJECTION		
		4 PLACES ± --- ± --- 3 PLACES ± --- ± --- 2 PLACES ± --- ± --- 1 PLACE ± --- ± ---	mm INCH ± --- ± --- ± --- ± --- ± --- ± --- ± --- ± ---	DRAWN BY: PGIBLIN DATE: 2005/11/07	CHECKED BY: DATE:	TITLE METAL LC DUPLEX ADAPTER (W/ THREADED INSERTS)			
		ANGULAR ±1/2°		APPROVED BY: DATE:	MOLEX INCORPORATED				
		DRAFT WHERE APPLICABLE MUST REMAIN WITHIN DIMENSIONS		MATERIAL NO. 1061271890	DOCUMENT NO. SD-106127-1890	SHEET NO. 1 OF 1			

9 8 7 6 5 4 3 2 1