

## Excellent Integrated System Limited

Stocking Distributor

Click to view price, real time Inventory, Delivery & Lifecycle Information:

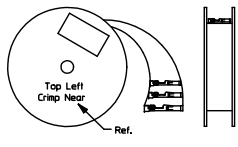
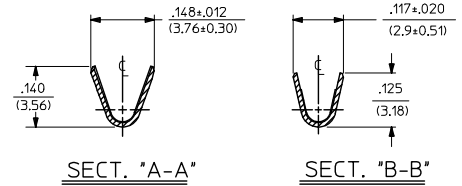
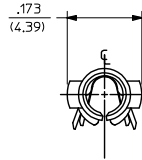
[Molex Connector Corporation](#)

[0002091115](#)

For any questions, you can email us directly:

[sales@integrated-circuit.com](mailto:sales@integrated-circuit.com)

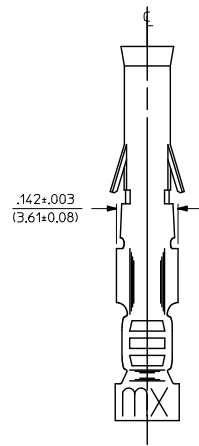
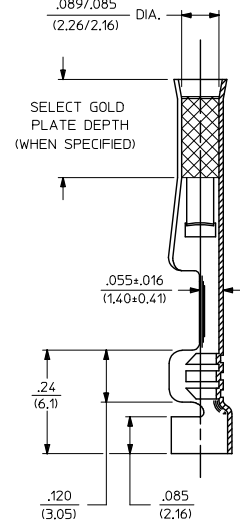
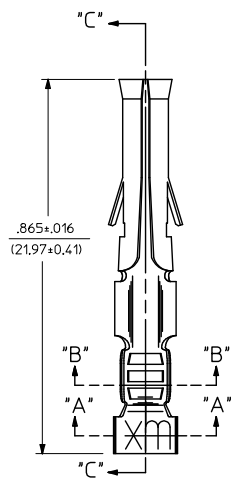
PART NO.	ENG. NO.
02-09-1119	1381-A(P901L)
02-09-1117	1381-A(P901)
02-09-1115	1381-A(P901I)
02-09-5133	1381-A(P591L)
02-09-5130	1381-A(P591)
02-09-5142	1381-A(P550L)
02-09-5143	1381-A(550)



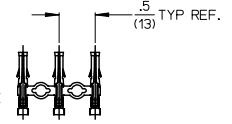
**LEGEND**

1381-A(\*\*\*\*\*)\*

- FORM BLANK = STD. CHAIN
- 1 = STD. CHAIN WITH INTERLEAF PAPER
- L = LOOSE
- FINISH CODE
- P = PREPLATE
- BLANK = POSTPLATE



**SECT. "C-C"**



**NOTES:**

1. MATERIAL: BRASS
2. FINISH:
  - 901 HOT TIN DIP .000020/(0.00051) MIN.
  - 591 SELECT GOLD PLATE .000050/(0.00127) MIN. IN CONTACT AREA. OVER .000050/(0.00127) MIN. NICKEL OVERALL WITH .000010/(0.00025) MAX. GOLD FLASH OVERALL.
  - 550 SELECT GOLD PLATE .000015/(0.00038) MIN. IN CONTACT AREA. OVER .000030/(0.00076) MIN. NICKEL OVERALL WITH .000010/(0.00025) MAX. GOLD FLASH OVERALL.
3. PRODUCT SPECIFICATION PS-43660-9999.
4. PACKAGING INFORMATION: NOT AVAILABLE
5. TERMINAL FOR USE WITH .093/(2.36) SERIES HOUSINGS AND WILL ACCEPT 18-22 AWG WIRE
6. INSERTION FORCE: 3.5 LBS. MAX. WHEN TERMINAL IS INSERTED INTO AN .093 SERIES HOUSING.
7. TERMINAL RETENTION: 20 LBS. MIN. FROM HOUSING.

CORRECT TOLERANCE DEC NO: JCP2014-4764 DRAWN: JDOX 2014/05/15 CHKD: KIPPER 2014/05/15 APPROV: SMITH 2014/05/27	QUALITY SYMBOLS ▽=0 ▽=0 ▽=0	GENERAL TOLERANCES (UNLESS SPECIFIED)		DIMENSION STYLE		SCALE	DESIGN UNITS	THIRD ANGLE PROJECTION	
				IN/MM		6:1	INCH		
		4 PLACES ±	±	DRAWN BY	DATE	TITLE CRIMP TERMINAL, FEMALE .093/(2.36) DIA. 18-22 AWG <b>molex</b> DOCUMENT NO. SD-1381-* SHEET NO. 1 OF 1			
		3 PLACES ±	±.010	GEP	1987/11/06				
2 PLACES ±	±.014	CHECKED BY	DATE						
1 PLACE ±	±.035	RW	1987/11/06						
0 PLACE ±	±	APPROVED BY	DATE						
		RAS	1987/11/06						
ANGULAR ±1/2°		MATERIAL NO.		SEE CHART		DOCUMENT NO.			
DRAFT WHERE APPLICABLE MUST REMAIN WITHIN DIMENSIONS		SIZE		THIS DRAWING CONTAINS INFORMATION THAT IS PROPRIETARY TO MOLEX INCORPORATED AND SHOULD NOT BE USED WITHOUT WRITTEN PERMISSION					