

Excellent Integrated System Limited

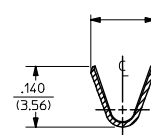
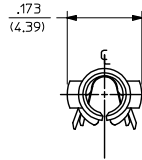
Stocking Distributor

Click to view price, real time Inventory, Delivery & Lifecycle Information:

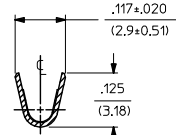
[Molex Connector Corporation](#)
[0002095133](#)

For any questions, you can email us directly:
sales@integrated-circuit.com

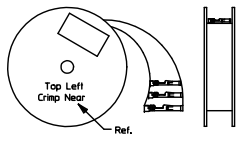
PART NO.	ENG. NO.
02-09-1119	1381-A(P901L)
02-09-1117	1381-A(P901)
02-09-1115	1381-A(P901I)
02-09-5133	1381-A(P591L)
02-09-5130	1381-A(P591)
02-09-5142	1381-A(P550L)
02-09-5143	1381-A(550)



SECT. "A-A"



SECT. "B-B"

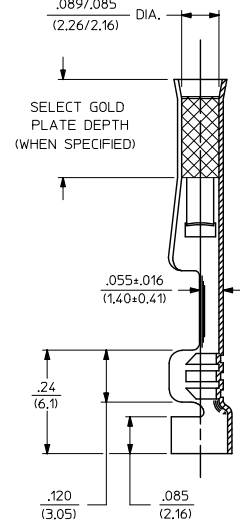
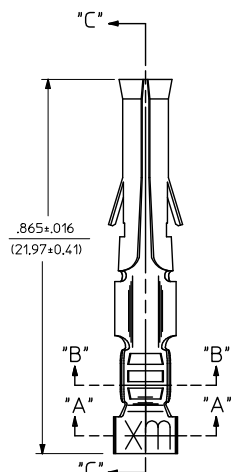


STANDARD CHAIN

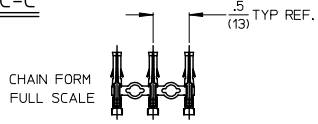
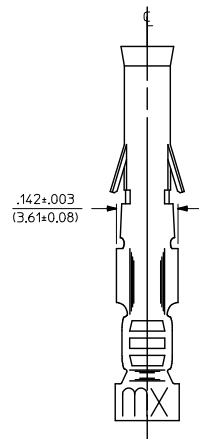
LEGEND

1381-A(***)

- P = PREPLATE
- BLANK = POSTPLATE
- FORM BLANK = STD. CHAIN
- 1 = STD. CHAIN WITH INTERLEAF PAPER
- L = LOOSE
- FINISH CODE



SECT. "C-C"



CHAIN FORM FULL SCALE

NOTES:

- MATERIAL: BRASS
- FINISH:
 - 901 HOT TIN DIP .000020/(0.00051) MIN.
 - 591 SELECT GOLD PLATE .000050/(0.00127) MIN. IN CONTACT AREA. OVER .000050/(0.00127) MIN. NICKEL OVERALL WITH .000010/(0.00025) MAX. GOLD FLASH OVERALL.
 - 550 SELECT GOLD PLATE .000015/(0.00038) MIN. IN CONTACT AREA. OVER .000030/(0.00076) MIN. NICKEL OVERALL WITH .000010/(0.00025) MAX. GOLD FLASH OVERALL.
- PRODUCT SPECIFICATION PS-43660-9999.
- PACKAGING INFORMATION: NOT AVAILABLE
- TERMINAL FOR USE WITH .093/(2.36) SERIES HOUSINGS AND WILL ACCEPT 18-22 AWG WIRE
- INSERTION FORCE: 3.5 LBS. MAX. WHEN TERMINAL IS INSERTED INTO AN .093 SERIES HOUSING.
- TERMINAL RETENTION: 20 LBS. MIN. FROM HOUSING.

CORRECT TOLERANCE DEC NO: JCP2014-4764 DRAWN: JDOX 2014/05/15 CHKD: KIPPER 2014/05/15 APPROV: SMITH 2014/05/27	QUALITY SYMBOLS ▽=0 ▽=0 ▽=0	GENERAL TOLERANCES (UNLESS SPECIFIED)		DIMENSION STYLE		SCALE	DESIGN UNITS	THIRD ANGLE PROJECTION	
		mm	INCH	IN/MM		6:1	INCH		
		4 PLACES ± --- ± ---		DRAWN BY	DATE	TITLE			
		3 PLACES ± --- ± .010		GEP	1987/11/06	CRIMP TERMINAL, FEMALE			
		2 PLACES ± 0.25 ± .014		CHECKED BY	DATE	.093/(2.36) DIA.			
		1 PLACE ± 0.35 ± ---		RW	1987/11/06	18-22 AWG			
		0 PLACE ± ±		APPROVED BY	DATE	molex			
				RAS	1987/11/06	SD-1381-*			
		ANGULAR ±1/2°		MATERIAL NO.		DOCUMENT NO.		SHEET NO.	
		DRAFT WHERE APPLICABLE MUST REMAIN WITHIN DIMENSIONS		SEE CHART				1 OF 1	
		THIS DRAWING CONTAINS INFORMATION THAT IS PROPRIETARY TO MOLEX INCORPORATED AND SHOULD NOT BE USED WITHOUT WRITTEN PERMISSION							