

Excellent Integrated System Limited

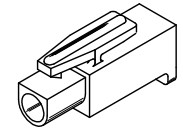
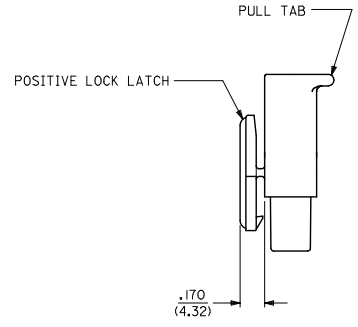
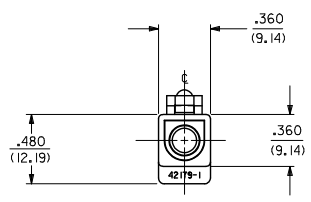
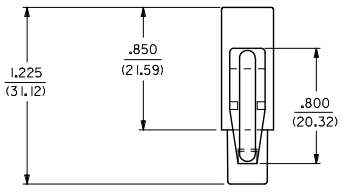
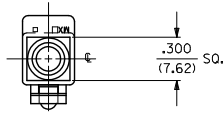
Stocking Distributor

Click to view price, real time Inventory, Delivery & Lifecycle Information:

[Molex Connector Corporation](#)
[0003126014](#)

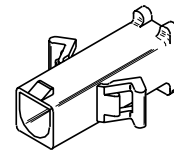
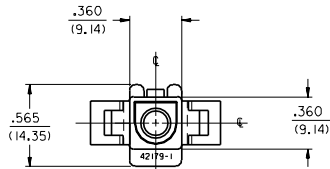
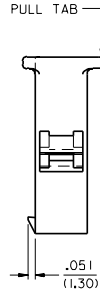
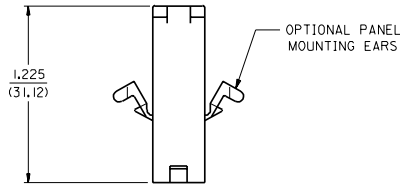
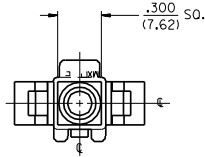
For any questions, you can email us directly:

sales@integrated-circuit.com



RECEPTACLE

REMOVE OBSOLETE DEC NO: UCP2016-4886 DRAWN BY: DRWBAFFELDRN 2016/06/28 CHECKED BY: CHKORAKIPER 2016/06/29 APPROVED BY: APPRCSMITH 2016/07/06	QUALITY SYMBOLS	GENERAL TOLERANCES (UNLESS SPECIFIED)	DIMENSION STYLE	SCALE	DESIGN UNITS	THIRD ANGLE PROJECTION
	▽=0	mm INCH	IN/MM	1:1	INCH	
	▽=0	4 PLACES ± --- ± ---	DRAWN BY DATE			
	▽=0	3 PLACES ± --- ± .007	GEP 1988/05/05	TITLE		
		2 PLACES ± 0.18 ± .010	CHECKED BY DATE	.125/(3.17) HOUSING PLUG AND RECEPTACLE 1 CIRCUIT		
		1 PLACE ± 0.25 ± ---	RW 1988/05/05			
		0 PLACE ± ±	APPROVED BY DATE	molex		
		ANGULAR ± 1/2°				
		DRAFT WHERE APPLICABLE MUST REMAIN WITHIN DIMENSIONS	MATERIAL NO.	DOCUMENT NO.	SHEET NO.	
			SEE CHART	SD-42179-1*	1 OF 3	
			THIS DRAWING CONTAINS INFORMATION THAT IS PROPRIETARY TO MOLEX INCORPORATED AND SHOULD NOT BE USED WITHOUT WRITTEN PERMISSION			



PLUG

G1 SEE SHEET I		DIMENSIONS SHOWN METRIC INCH UNLESS OTHERWISE SPECIFIED		-0 -0 REVISIONS ONLY ON CAD SYSTEM	
G SEE SHEET I		TOLERANCES UNLESS OTHERWISE SPECIFIED		TITLE .125/(3.17) HOUSING, PLUG AND RECEPTACLE, 1 CKT.	
E SEE SHT. I		INCH METRIC		MOLEX INCORPORATED SHEET NO. DATE	
C SEE SHT. I		3 PLACE ± .007 ---		2 5/6/88	
B SEE SHT. I		2 PLACE ± .010 ± 0.18		PART NO. DRG. NO.	
A SEE SHT. I		1 PLACE --- ± 0.25		SEE CHART SD-42179-1	
I SEE SHT. I		DRAFTING: REP. BY: GEP RAS		FILE NAME: 542179.H2	
LTR. REVISIONS		LTR. REVISIONS		THIS DRAWING CONTAINS INFORMATION THAT IS PROPRIETARY TO MOLEX INC. AND SHOULD NOT BE USED WITHOUT WRITTEN PERMISSION. CP	

42179

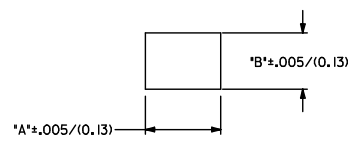
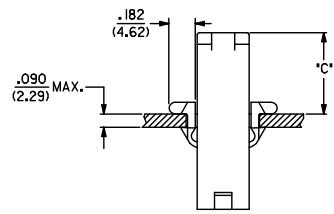
A

PLUG

PART NO.	ENG. NO.	
03-12-2016	42179-IP1	
03-12-2015	42179-IP	
03-12-7014	42179-IPRD	OBSOLETE
03-12-7015	42179-IPBU	OBSOLETE
03-12-7016	42179-IPRD	OBSOLETE
03-12-2071	42179-IPBK	OBSOLETE
03-12-2072	42179-IPGN	OBSOLETE
03-12-2073	42179-IPYW	OBSOLETE
03-12-2074	42179-IPBU	OBSOLETE
03-12-2075	42179-IPIGY	OBSOLETE

RECEPTACLE

PART NO.	ENG. NO.	
03-12-1016	42179-IR1	
03-12-6014	42179-IRIRD	
03-12-6015	42179-IRIBU	OBSOLETE
03-12-2081	42179-IRIBK	OBSOLETE
03-12-2082	42179-IRIGN	OBSOLETE
03-12-2083	42179-IRIYW	OBSOLETE
03-12-2084	42179-IRIGY	OBSOLETE



RECOMMENDED HOLE CUTOUT

HOUSING	DIM. "A"	DIM. "B"	DIM. "C"
PLUG	.521/(13.23)	.440/(11.18)	.55/(14.0)

LEGEND:

42179-1*****

CIRCUIT SIZE: _____

HOUSING TYPE: _____

P = PLUG

R = RECEPTACLE

MOUNTING EAR OPTION: _____

BLANK = WITH PREBENT EARS, PLUG ONLY

I = WITHOUT EARS

COLOR: _____

BLANK = 94V-2; TRANSLUCENT NATURAL COLOR

AM=AMBER BK=BLACK BU=BLUE

BN=BROWN GY=GRAY GN=GREEN

OR=ORANGE RD=RED YW=YELLOW

MATERIAL: _____

BLANK = NYLON 6/6, U.L. 94V-2

NOTES:

- PART ACCEPTS A MAXIMUM .250/(6.35) INSULATION DIA.
- FOR USE WITH MOLEX .125/(3.17) DIAMETER SERIES TERMINALS EXCEPT THE I219/I220 SERIES.

<p>REMOVE OBSOLETE</p> <p>EC NO: UCP2016-4886</p> <p>DRW: BAPPELDORN 2016/06/29</p> <p>CHK: KOKKIPIPER 2016/06/29</p> <p>APP: RICHSMITH 2016/07/06</p>	<p>QUALITY SYMBOLS</p> <p>▽=0</p> <p>▽=0</p> <p>▽=0</p>	<p>GENERAL TOLERANCES (UNLESS SPECIFIED)</p> <table border="1"> <thead> <tr> <th></th> <th>mm</th> <th>INCH</th> </tr> </thead> <tbody> <tr><td>4 PLACES</td><td>±---</td><td>±---</td></tr> <tr><td>3 PLACES</td><td>±---</td><td>±.007</td></tr> <tr><td>2 PLACES</td><td>±0.18</td><td>±.010</td></tr> <tr><td>1 PLACE</td><td>±0.25</td><td>±---</td></tr> <tr><td>0 PLACE</td><td>±</td><td>±</td></tr> </tbody> </table>			mm	INCH	4 PLACES	±---	±---	3 PLACES	±---	±.007	2 PLACES	±0.18	±.010	1 PLACE	±0.25	±---	0 PLACE	±	±	<p>DIMENSION STYLE</p> <p>IN/MM</p>	<p>SCALE</p> <p>1:1</p>	<p>DESIGN UNITS</p> <p>INCH</p>	<p>THIRD ANGLE PROJECTION</p>
			mm	INCH																					
		4 PLACES	±---	±---																					
		3 PLACES	±---	±.007																					
2 PLACES	±0.18	±.010																							
1 PLACE	±0.25	±---																							
0 PLACE	±	±																							
<p>ANGULAR ±1/2°</p>		<p>DRAWN BY</p> <p>GEP</p>	<p>DATE</p> <p>1988/05/05</p>	<p>TITLE</p> <p>.125/(3.17) HOUSING PLUG AND RECEPTACLE 1 CIRCUIT</p>																					
<p>DRAFT WHERE APPLICABLE MUST REMAIN WITHIN DIMENSIONS</p>		<p>CHECKED BY</p> <p>RW</p>	<p>DATE</p> <p>1988/05/05</p>	<p>molex</p>																					
<p>SEE CHART</p>		<p>APPROVED BY</p>	<p>DATE</p>	<p>MATERIAL NO.</p> <p>SD-42179-1*</p>	<p>DOCUMENT NO.</p>	<p>SHEET NO.</p> <p>3 OF 3</p>																			