

Excellent Integrated System Limited

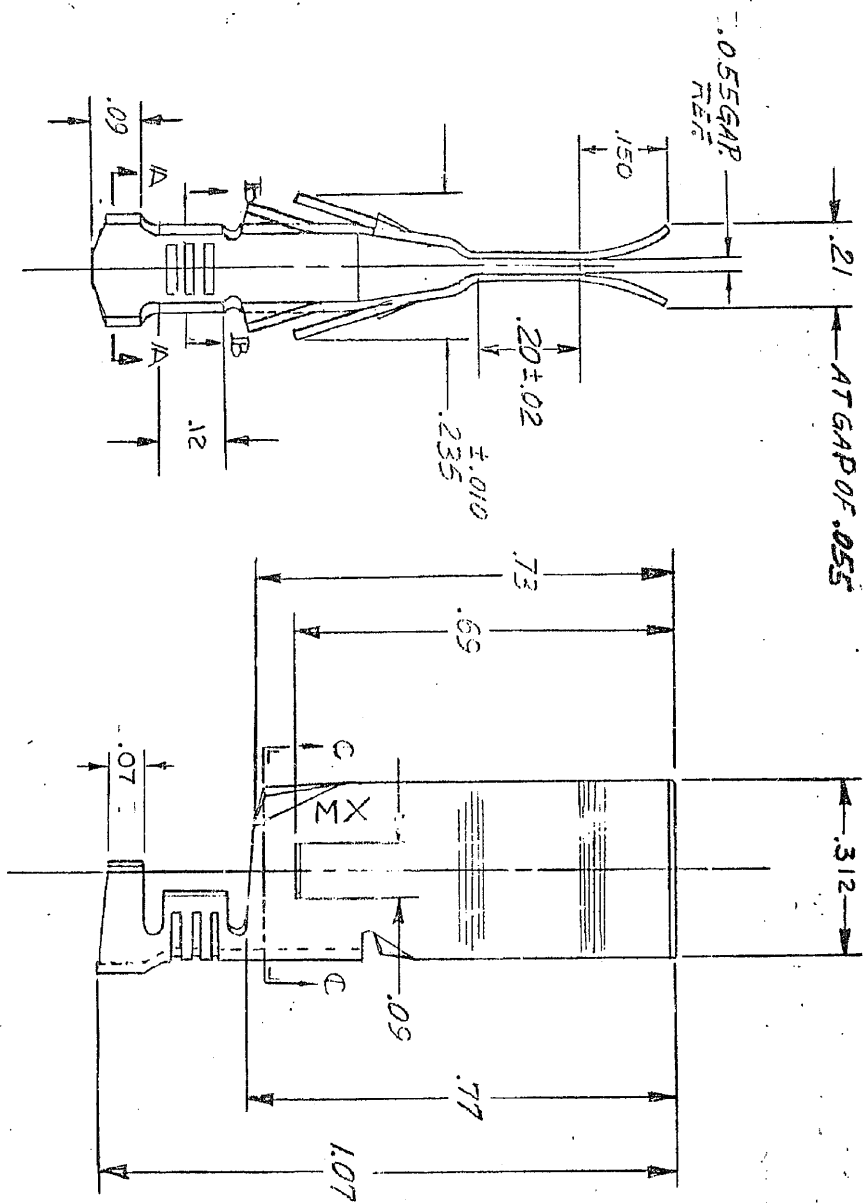
Stocking Distributor

Click to view price, real time Inventory, Delivery & Lifecycle Information:

[Molex Connector Corporation](#)
[0005121102](#)

For any questions, you can email us directly:

sales@integrated-circuit.com



SD-6482-1*

D	DELETE PART NO. ECR U2-1706 93-01-20 AK
C	.07 ADDED. ECN U8-2273 11-29-88 MB
B	REVISE MAT'L. CALLOUT BRONZE WAS BRASS & ADD EDP NO. TO 6482-1L ERO # 22731 6-12-86 JCS MB
A	ADD EDP # TO 6482-1 PER ERO # 19391 10-5-84 JCS
1	X-RELEASE PER ERO # 14276 10-12-81 JOK

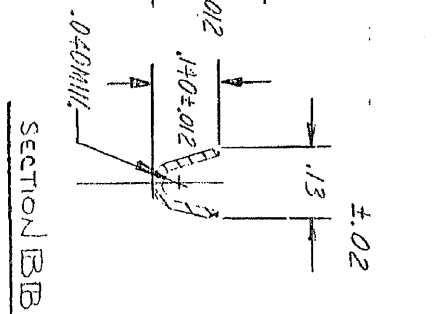
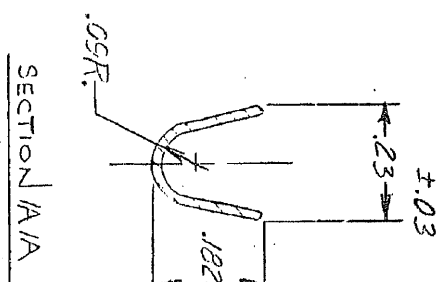
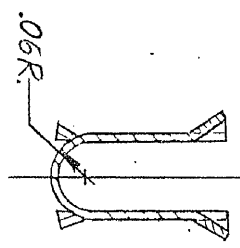
REV	DATE	DESCRIPTION
-----	------	-------------

UNLESS OTHERWISE SPECIFIED
 TOLERANCES:
 3-PLACE DEC. DIMS ± .010
 2-PLACE DEC. DIMS ± .014
 ANGULAR ± 1/2°
 DRAFT WHEN APPLICABLE MUST REMAIN WITHIN DIMENSIONS UNLESS OTHERWISE SPECIFIED.
 DO NOT SCALE DRAWING

TERMINAL
 MOLEX PRODUCTS CO.
 DOWNS GROVE, ILL. 60915, U.S.A.

MATERIAL:
 BRONZE, HIGH TEMP

05-12-1102	6482-1	CHA
PART NO.	ENG NO.	



NOTES:
 Δ FOR CRIMPING 14 TO