

Excellent Integrated System Limited

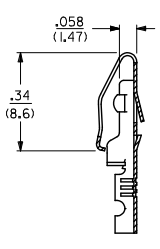
Stocking Distributor

Click to view price, real time Inventory, Delivery & Lifecycle Information:

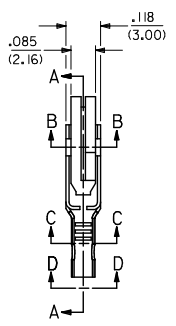
[Molex Connector Corporation](#)
[0008050304](#)

For any questions, you can email us directly:
sales@integrated-circuit.com

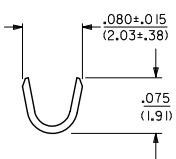
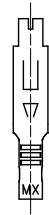
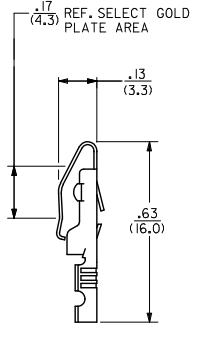
13 12 11 10 9 8 7 6 5 4 3 2 1



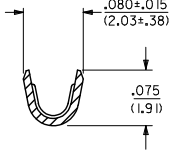
SECTION A-A



SECTION C-C



VIEW D-D



LEGEND

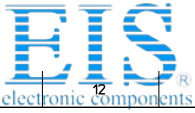
4573-**-**
FORM
BLANK=CHAIN
L=LOOSE

PLATING
(PER SDES-88)

- NOTES:
- MATERIAL: BRASS, ALLOY C260, .010/(0.25) THICK.
 - FINISH:
 - (P909) * : OVERALL HOT TIN DIP: .000100/(0.00254) MIN.
 - (P555) : SELECT GOLD: .000015/(0.00038) MIN.
 - OVERALL NICKEL: .000030/(0.00076) MIN.
 - (P228) : SELECT GOLD: .000030/(0.00076) MIN.
 - SELECT TIN: .000100/(0.00254) MIN.
 - OVERALL NICKEL UNDERPLATE .000050/(0.00127) MIN.
 - * THE PRIMARY SHIPPING CARTON WILL BE LABELED 'COMPLIANT TO RoHS DIRECTIVE 2002/95/EC AND ELV ANNEX II OF DIRECTIVE 2000/53/EC'. CARTONS WITHOUT THIS LABEL MAY CONTAIN PRODUCT WITH TIN/LEAD PLATING.
 - PRODUCT SPECIFICATION: PS-09-50 APPLIES.
 - TERMINAL FOR USE WITH 24-30 AWG WIRE.

CHANGE P/N'S REV F2	DESCRIPTION 7088/12/15 7088/12/18 7088/12/18 7088/12/18 7088/12/18 7088/12/18	QUALITY SYMBOLS ▽=0 ▽=0	GENERAL TOLERANCES (UNLESS SPECIFIED)		DIMENSION STYLE IN/MM		SCALE 1:1	DESIGN UNITS INCH	THIRD ANGLE PROJECTION
			mm	INCH	DRAWN BY ROBERTS	DATE 08/15/91	TITLE TERMINAL CRIMP ON		
			4 PLACES ± --- ± ---		CHECKED BY PATEL	DATE 08/15/91	MOLEX INCORPORATED		
			3 PLACES ± --- ± .010		APPROVED BY LENZ	DATE 08/15/91	SD-4573		
			2 PLACES ± 0.25 ± .014		MATERIAL NO.		DOCUMENT NO.	SHEET NO. 1 OF 2	
			1 PLACE ± 0.36 ± ---		DRAFT WHERE APPLICABLE MUST REMAIN WITHIN DIMENSIONS				
			ANGULAR ± 1/2°		SEE CHART				
THIS DRAWING CONTAINS INFORMATION THAT IS PROPRIETARY TO MOLEX INCORPORATED AND SHOULD NOT BE USED WITHOUT WRITTEN PERMISSION									

1b_frame_C_P_ME_T Rev. E 2006/04/15 12 11 10 9 8 7 6 5 4 3 2 1



Distributor of Molex Connector Corporation: Excellent Integrated System Limited

Datasheet of 0008050304 - TERM EDGE KK 24-30AWG CRIMP GOLD

Contact us: sales@integrated-circuit.com Website: www.integrated-circuit.com

13 12 11 10 9 8 7 6 5 4 3 2 1

PART NO.	ENG. NO.	PART NO.	ENG. NO.	PART NO.	ENG. NO.	PART NO.	ENG. NO.
08-03-0305	4573-P909						
08-03-0306	4573-P909L						
08-05-0303	4573-P555						
08-05-0304	4573-P555L						
50-36-2431	4573-P228						
50-36-2432	4573-P228L						

COLUMN NO. 1	CON'T. IN COLUMN NO.	SHEET NO.	COLUMN NO. 2	CON'T. IN COLUMN NO.	SHEET NO.	COLUMN NO. 3	CON'T. IN COLUMN NO.	SHEET NO.	COLUMN NO. 4	CON'T. IN COLUMN NO.	SHEET NO.
--------------	----------------------	-----------	--------------	----------------------	-----------	--------------	----------------------	-----------	--------------	----------------------	-----------

CHANGE P/N'S EC NO: UCP2009-1522 2008/12/15 DRAWN BY: PPR 2008/12/18 CHKD BY: SUSEK 2008/12/18 APPR'D BY: SMITH 2008/12/22	QUALITY SYMBOLS ▽=0 ▽=0	GENERAL TOLERANCES (UNLESS SPECIFIED)		DIMENSION STYLE IN/MM		SCALE 1:1	DESIGN UNITS INCH	THIRD ANGLE PROJECTION		
		4 PLACES ± --- ± ---	mm	INCH	DRAWN BY	DATE	TITLE TERMINAL CANTILEVER STRAIGHT-ON CRIMP TYPE			
		3 PLACES ± --- ± .010			ROBERTS	08/26/91				
		2 PLACES ± 0.25 ± .014			CHECKED BY	DATE	MOLEX INCORPORATED			
1 PLACE ± 0.35 ± ---			PATEL	08/26/91						
ANGULAR ± 1/2°		APPROVED BY		DATE	MATERIAL NO. DOCUMENT NO. SHEET NO.					
		LENZ		08/26/91	SEE CHART		SD-4573		2 OF 2	
DRAFT WHERE APPLICABLE MUST REMAIN WITHIN DIMENSIONS		SIZE		THIS DRAWING CONTAINS INFORMATION THAT IS PROPRIETARY TO MOLEX INCORPORATED AND SHOULD NOT BE USED WITHOUT WRITTEN PERMISSION						

12 11 10 9 8 7 6 5 4 3 2 1