

Excellent Integrated System Limited

Stocking Distributor

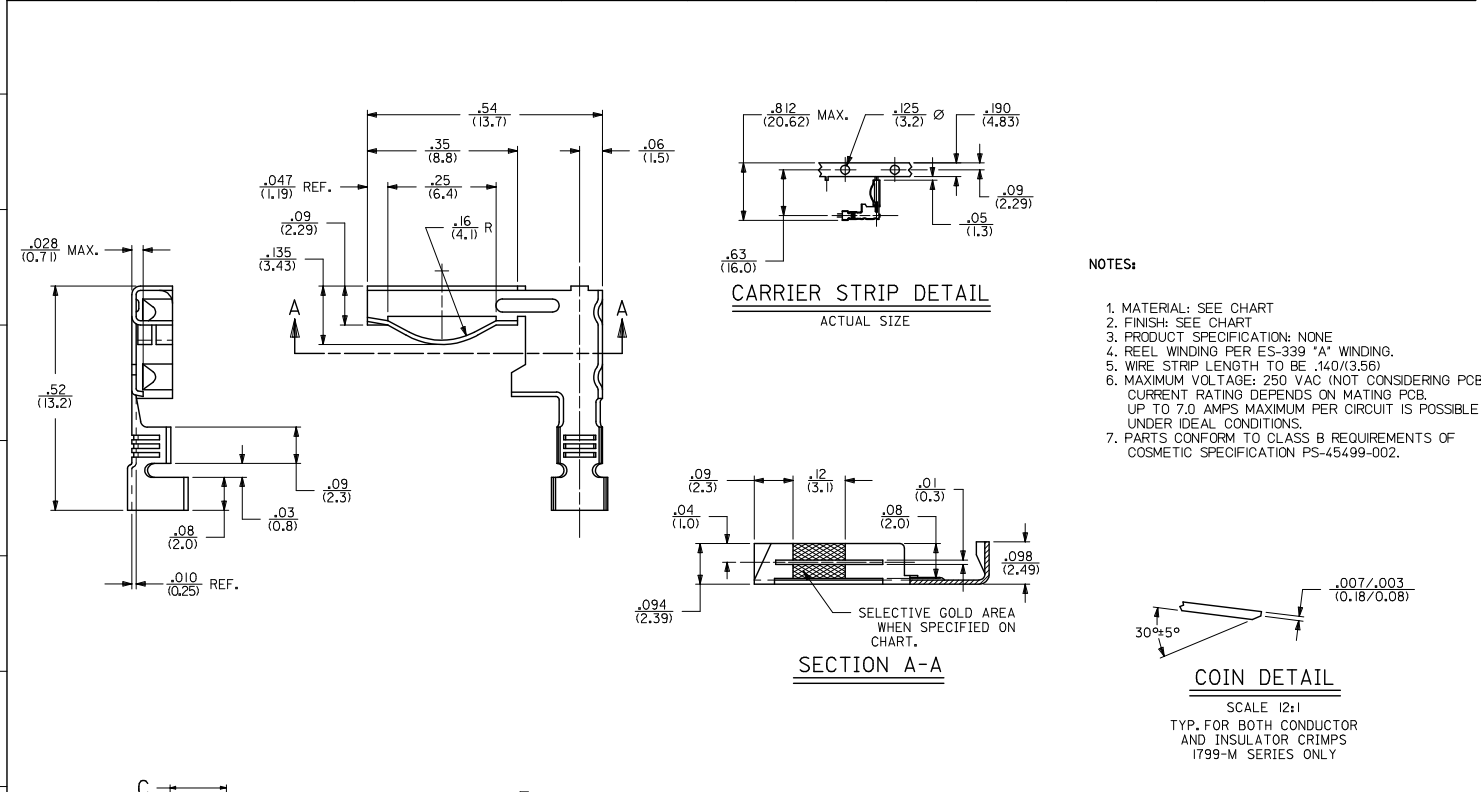
Click to view price, real time Inventory, Delivery & Lifecycle Information:

[Molex Connector Corporation](#)
[0008300109](#)

For any questions, you can email us directly:

sales@integrated-circuit.com

PART NO.	PACKED	MATERIAL	FINISH	WIRE RANGE AWC.	INS. DIA. RANGE	C	D	E	F	ENG. NO.	REMARKS
08-35-0105	CHAIN	70/30 BRASS .010/(0.25) THICK	.00002/(0.0005) MIN. GOLD PLATE OVER .00003/(0.0008) MIN. NICKEL PLATE	#18-#24 CU. STR.	0.060/0.120 (1.52/3.05)	0.130±.030 (3.30±0.76)	0.140±.015 (3.56±0.38)	0.105±.020 (2.67±0.51)	0.088±.015 (2.24±0.38)	1799-MAG	GOLD OVERALL OBSOLETE
08-34-0105	CHAIN	70/30 BRASS .010/(0.25) THICK	.00002/(0.0005) MIN. GOLD PLATE OVER .00003/(0.0008) MIN. NICKEL PLATE PER ENG. STD. NO. 4L							1799-MAG I	SELECTIVE GOLD
08-30-0109	CHAIN	70/30 BRASS .010/(0.25) THICK	TIN PLATED							1799-MAT	



- NOTES:**
1. MATERIAL: SEE CHART
 2. FINISH: SEE CHART
 3. PRODUCT SPECIFICATION: NONE
 4. REEL WINDING PER ES-339 'A' WINDING.
 5. WIRE STRIP LENGTH TO BE .140/(3.56)
 6. MAXIMUM VOLTAGE: 250 VAC (NOT CONSIDERING PCB) CURRENT RATING DEPENDS ON MATING PCB. UP TO 7.0 AMPS MAXIMUM PER CIRCUIT IS POSSIBLE UNDER IDEAL CONDITIONS.
 7. PARTS CONFORM TO CLASS B REQUIREMENTS OF COSMETIC SPECIFICATION PS-45499-002.

QUALITY SYMBOLS ▽=0 ∇=0	GENERAL TOLERANCES (UNLESS SPECIFIED)		DIMENSION STYLE IN/MM		SCALE 6:1	DESIGN UNITS INCH	THIRD ANGLE PROJECTION
	4 PLACES ± ---	± ---	DRAWN BY	DATE	TITLE TERMINAL - RIGHT ANGLE MODIFIED FOR EDGE CONNECTORS		
	3 PLACES ± ---	± .010	CHECKED BY	DATE			
	2 PLACES ± 0.25	± .015	APPROVED BY	DATE	MOLEX INCORPORATED		
1 PLACE ± 0.38	± ---	MATERIAL NO.	DATE	DOCUMENT NO. SD-1799-MA			
DRAFT WHERE APPLICABLE MUST REMAIN WITHIN DIMENSIONS		SEE CHART		THIS DRAWING CONTAINS INFORMATION THAT IS PROPRIETARY TO MOLEX INCORPORATED AND SHOULD NOT BE USED WITHOUT WRITTEN PERMISSION			