

Excellent Integrated System Limited

Stocking Distributor

Click to view price, real time Inventory, Delivery & Lifecycle Information:

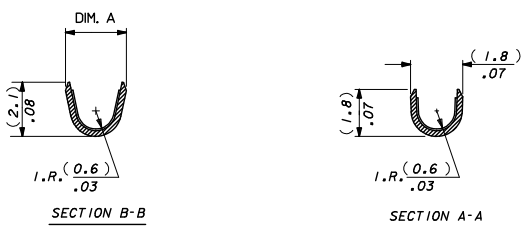
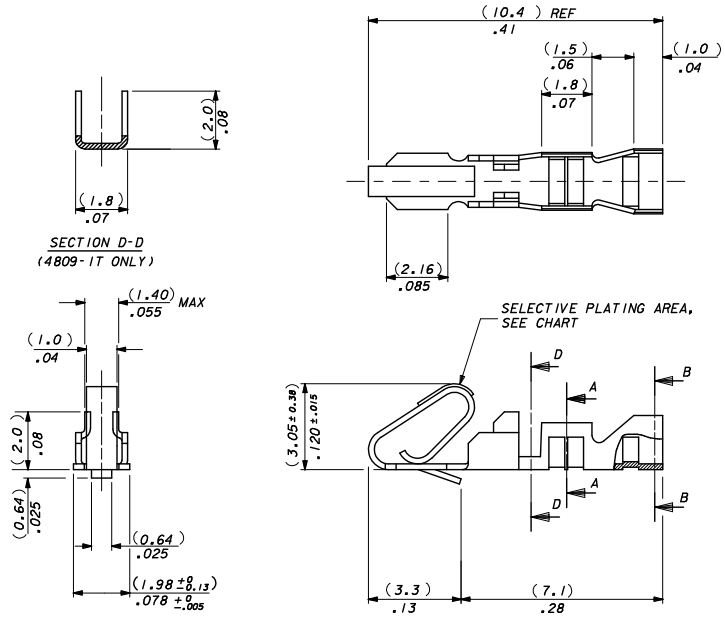
[Molex Connector Corporation](#)
[0008500030](#)

For any questions, you can email us directly:

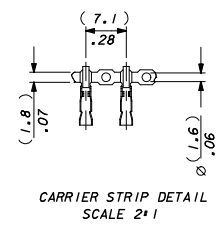
sales@integrated-circuit.com

NOTES:

1. MATERIAL: (0.21)/.008 THICK BRASS.
2. FINISH: SEE SHEET 2.
3. THIS PART CONFORMS TO PRODUCT SPEC. 99020-0088.
4. TERMINAL MUST MEET BEND SPEC. SDES-219.
5. SUITABLE FOR 22-30 GA. WIRE, (1.57)/.062 MAX. INSULATION.
6. THIS PART CONFORMS TO CLASS B REQUIREMENTS OF COSMETIC SPECIFICATION PS-45499-002.



4809-(*)* *
 * BLANK : DIM. A = (2.1) / 1.083 REF.
 M: DIM A = (2.2) / .087 REF.
 * BLANK*CHAIN FORM TOP
 FEEDING REEL
 L-LOOSE FORM



SELECT GOLD AREA EC NO: UCP2013-5411 DRAWN: KIPPER 2013/06/14 CHKD: BELL 2013/06/17 APPR: SMITH 2013/06/28	QUALITY SYMBOLS ▽=0 ▽=0 ▽=0	GENERAL TOLERANCES (UNLESS SPECIFIED)	DIMENSION STYLE	SCALE	DESIGN UNITS	THIRD ANGLE PROJECTION
		mm INCH	MM/IN	10:1	METRIC	☉
REV	DESCRIPTION	4 PLACES ± --- ± ---	DRAWN BY DATE	TITLE		
		3 PLACES ± --- ± .010	MCC 1986/07/30	ANTI-FISH HOOKING		
		2 PLACES ± 0.25 ± .014	CHECKED BY DATE	TERMINAL KK.(2.50)/.100		
		1 PLACE ± 0.35 ± ---	DMORIARTY 2004/10/18	molex		
		0 PLACE ± ±	APPROVED BY DATE			
		ANGULAR ± --- °	JDENNEHY 2004/10/19	MATERIAL NO.	DOCUMENT NO.	SHEET NO.
		DRAFT WHERE APPLICABLE MUST REMAIN WITHIN DIMENSIONS	SEE CHART		SD-4809-*	1 OF 2
			SIZE C	THIS DRAWING CONTAINS INFORMATION THAT IS PROPRIETARY TO MOLEX INCORPORATED AND SHOULD NOT BE USED WITHOUT WRITTEN PERMISSION		

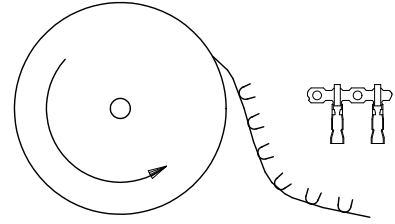
FINISH NOTES*

(550) GOLD PLATE (0.00038)/.000015 MIN. OVER (0.00076)/.000030 MIN. NICKEL

IN CONTACT AREA WITH (0.00005)/.000002 MIN. GOLD FLASH OVERALL.

(555) SELECTIVE GOLD (0.00038)/.000015 MIN. OVER (0.00076)/.000030 MIN. NICKEL IN CONTACT AREA ONLY.

(P918) HOT TIN DIP (0.00102-0.00305)/.000040-.000120

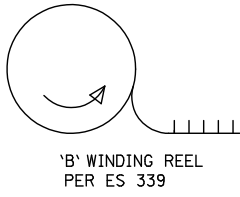
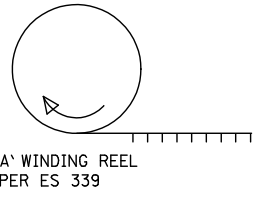


TERMINALS FEEDING FROM THE TOP OF THE REEL ARE STANDARD WOUND

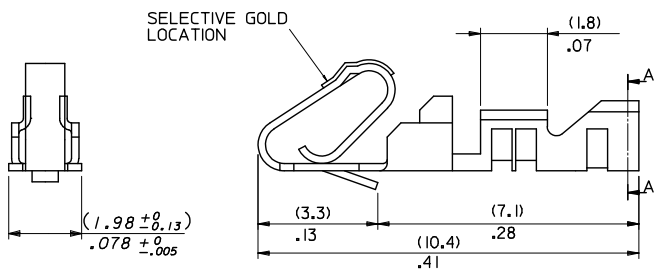
08-55-0110	4809- (555)	CHAIN	(555)	(2.45 - 1.75)/ .096 - .069
08-55-0111	↑ - (555) L	LOOSE		
08-56-0120	- (550)	CHAIN	(550)	(2.45 - 1.75)/ .096 - .069
08-56-0115	- (550) L	LOOSE		
08-50-0135	↓ -(P918)	CHAIN	(P918)	(2.45 - 1.75)/ .096 - .069
08-50-0136	4809 - (P918) L	LOOSE		
PART No	ENG No	FORM	FINISH	DIM . A
TOP FEEDING REELS ONLY				

CORRECT PLATING EC NO: UCP2011-2151 DRAWN/STEWART 2/11/01/18 CHK/DK/PIPER 2/11/01/18 APPR/SMT/TH 2/11/02/04	QUALITY SYMBOLS ∇=0 ∇=0 ∇=0	GENERAL TOLERANCES (UNLESS SPECIFIED)		DIMENSION STYLE		SCALE	DESIGN UNITS	THIRD ANGLE PROJECTION	
				MM/IN		NTS	METRIC		
		4 PLACES ± --- ± ---		DRAWN BY DATE		TITLE ANTI-FISH HOOKING TERMINAL KK.(2.50)/.100			
		3 PLACES ± --- ± .010		MCC 1986/07/30					
2 PLACES ± 0.25 ± .014		CHECKED BY DATE		MOLEX INCORPORATED MATERIAL NO. SD-4809-* DOCUMENT NO.					
1 PLACE ± 0.35 ± ---		DMORIART 2004/10/18							
ANGULAR ± ---°		APPROVED BY DATE		SHEET NO. 2 OF 2					
		J DENNEHY 2004/10/19							
DRAFT WHERE APPLICABLE MUST REMAIN WITHIN DIMENSIONS		SEE CHART		THIS DRAWING CONTAINS INFORMATION THAT IS PROPRIETARY TO MOLEX INCORPORATED AND SHOULD NOT BE USED WITHOUT WRITTEN PERMISSION					

10 9 8 7 6 5 4 3 2 1



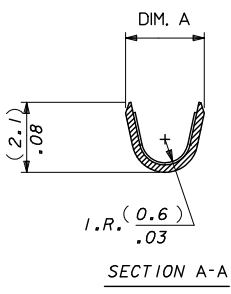
4809C-(*) * *
INSULATION CRIMP WIDTH
BLANK: DIM. A = (2.1)/.083 REF.
M: DIM. A = (2.2)/.087 REF.
FORM:
BLANK = CHAIN FORM, TOP FEEDING REEL
L = LOOSE FORM
BF = CHAIN FORM, BOTTOM FEEDING REEL



08-55-0112	4809C-(555)	CHAIN	(555)	(2.45-1.75)/.096-.069
08-50-0030	4809C-(P918)M	CHAIN	(P918)	(2.35-2.05)/.093-.081
08-50-0031	4809C-(P918)	CHAIN	(P918)	(2.45-1.75)/.096-.069
08-50-0032	4809C-(P918)L	LOOSE	(P918)	(2.45-1.75)/.096-.069
PART No	ENG No	FORM	FINISH (SEE NOTE-2)	DIM . A
'B' WINDING PER E.S. 339 (CHAIN ONLY)				

97-00-0001	4809C-(P918)BF	CHAIN	(P918)	(2.45-1.75)/.096-.069
PART No	ENG No	FORM	FINISH (SEE NOTE-2)	DIM . A
'A' WINDING PER E.S. 339				

- NOTES:
1. MATERIAL (0.20±0.01)/.008±.0004 THICK BRASS.
 2. FINISH: (555) - SELECTIVE GOLD (0.00038)//0.000015 MIN., OVERALL NICKEL (0.00076)//0.000030 MIN. (P918) - HOT TIN DIP: (0.00102-0.00305)//0.000040-.000120
 3. THIS PART CONFORMS TO MOLEX PRODUCT SPEC. PS-99020-0088.
 4. SAME AS SD-4809-* EXCEPT WITH CAT EARS.
 5. FOR 22-30 GAUGE WIRE & (1.57)/.062 DIA. INSULATION MAX.
 6. THIS PART CONFORMS TO CLASS B REQUIREMENTS OF COSMETIC SPECIFICATION PS-45499-002.



SELECT GOLD AREA EC NO: LCP2013-5411 DRAWN BY: PPER 2013/06/14 CHECKED BY: BELL 2013/06/17 APPROVED BY: SMITH 2013/06/28	QUALITY SYMBOLS	GENERAL TOLERANCES (UNLESS SPECIFIED)	DIMENSION STYLE MM/IN	SCALE NTS	DESIGN UNITS METRIC	THIRD ANGLE PROJECTION
	▽=0	4 PLACES ± --- ± ---	DRAWN BY DATE AOD 1999/02/20	TITLE	ANTIFISH HOOKING TERMINAL KK,(2.50)/.100 WITH CAT EARS	
	▽=0	3 PLACES ± --- ± .010	CHECKED BY DATE DMORIARTY 2004/10/18			
	▽=0	2 PLACES ± 0.25 ± .020	APPROVED BY DATE JDENNEHY 2004/10/19			
	1 PLACE ± 0.51 ± ---	MATERIAL NO. SEE CHART	DOCUMENT NO. SD-4809C-****			
		0 PLACE ± ±				
		ANGULAR ± --- °				
		DRAFT WHERE APPLICABLE MUST REMAIN WITHIN DIMENSIONS				

9 8 7 6 5 4 3 2 1