

Excellent Integrated System Limited

Stocking Distributor

Click to view price, real time Inventory, Delivery & Lifecycle Information:

[Molex Connector Corporation](#)

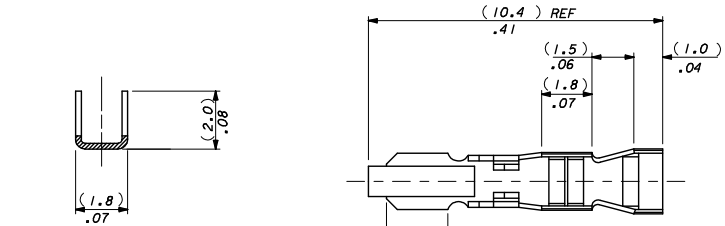
[0008500135](#)

For any questions, you can email us directly:

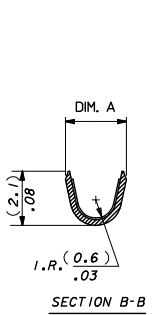
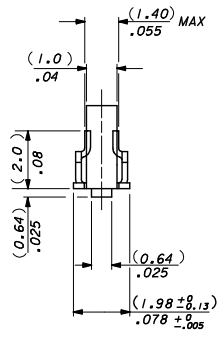
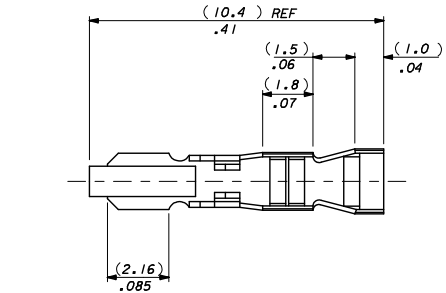
sales@integrated-circuit.com

NOTES:

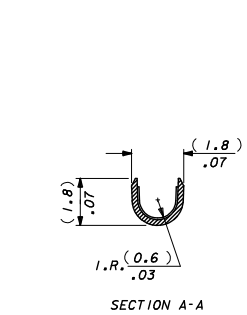
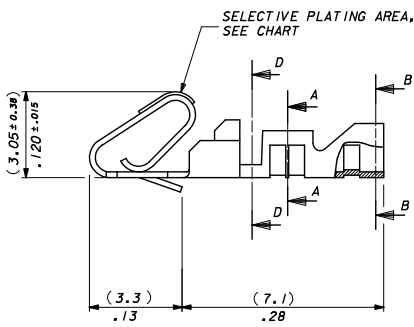
1. MATERIAL: (0.21)/.008 THICK BRASS.
2. FINISH: SEE SHEET 2.
3. THIS PART CONFORMS TO PRODUCT SPEC. 99020-0088.
4. TERMINAL MUST MEET BEND SPEC. SDES-219.
5. SUITABLE FOR 22-30 GA. WIRE, (1.57)/.062 MAX. INSULATION.
6. THIS PART CONFORMS TO CLASS B REQUIREMENTS OF COSMETIC SPECIFICATION PS-45499-002.



SECTION D-D
(4809-IT ONLY)

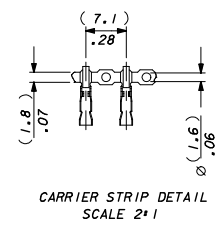


SECTION B-B



SECTION A-A

4809-(*)* *
 * BLANK : DIM. A = (2.1) / 1.083 REF.
 M: DIM A = (2.2) / .087 REF.
 * BLANK*CHAIN FORM TOP
 FEEDING REEL
 L-LOOSE FORM



CARRIER STRIP DETAIL
SCALE 2:1

SELECT GOLD AREA EC NO: UCP2013-5411 DRAWN: KIPPER 2013/06/14 CHKD: BELL 2013/06/17 APPROV: SMITH 2013/06/28	QUALITY SYMBOLS ▽=0 ▽=0 ▽=0	GENERAL TOLERANCES (UNLESS SPECIFIED)		DIMENSION STYLE		SCALE	DESIGN UNITS	THIRD ANGLE PROJECTION
		mm	INCH	MM/IN	DATE	10:1	METRIC	☉
AN	REV	4 PLACES	±---	---	MCC	1986/07/30	TITLE	
		3 PLACES	±---	±.010	CHECKED BY	DATE	ANTI-FISH HOOKING	
		2 PLACES	±0.25	±.014	DMORIARTY	2004/10/18	TERMINAL KK.(2.50)/.100	
		1 PLACE	±0.35	±---	APPROVED BY	DATE	molex	
		0 PLACE	±	±	JDENNEHY	2004/10/19	DOCUMENT NO. SD-4809-*	
		ANGULAR ±---°		MATERIAL NO.		SHEET NO.		
DRAFT WHERE APPLICABLE MUST REMAIN WITHIN DIMENSIONS		SEE CHART		SIZE C		THIS DRAWING CONTAINS INFORMATION THAT IS PROPRIETARY TO MOLEX INCORPORATED AND SHOULD NOT BE USED WITHOUT WRITTEN PERMISSION		

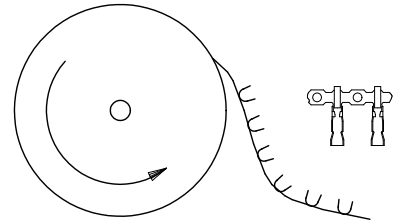
FINISH NOTES*

(550) GOLD PLATE (0.00038)/.000015 MIN. OVER (0.00076)/.000030 MIN. NICKEL

IN CONTACT AREA WITH (0.00005)/.000002 MIN. GOLD FLASH OVERALL.

(555) SELECTIVE GOLD (0.00038)/.000015 MIN. OVER (0.00076)/.000030 MIN. NICKEL IN CONTACT AREA ONLY.

(P918) HOT TIN DIP (0.00102-0.00305)/.000040-.000120



TERMINALS FEEDING FROM THE TOP OF THE REEL ARE STANDARD WOUND

08-55-0110	4809-(555)	CHAIN	(555)	(2.45 - 1.75)/.096 - .069
08-55-0111	↑ -(555)L	LOOSE		
08-56-0120	-(550)	CHAIN	(550)	(2.45 - 1.75)/.096 - .069
08-56-0115	-(550)L	LOOSE		
08-50-0135	↓ -(P918)	CHAIN	(P918)	(2.45 - 1.75)/.096 - .069
08-50-0136	4809 - (P918) L	LOOSE		
PART No	ENG No	FORM	FINISH	DIM . A
TOP FEEDING REELS ONLY				

CORRECT PLATING EC NO: UCP2011-2151 DRAWN/STEWART 2/11/01/18 CHK/DK/PIPER 2/11/01/18 APPR/SMT/TH 2/11/02/04 AM REV	QUALITY SYMBOLS ∇=0 ∇=0 ∇=0	GENERAL TOLERANCES (UNLESS SPECIFIED)		DIMENSION STYLE		SCALE	DESIGN UNITS	THIRD ANGLE PROJECTION	
		mm	INCH	MM/IN	DATE	NTS	METRIC		
		4 PLACES ±---	±---	DRAWN BY	1986/07/30	TITLE			
		3 PLACES ±---	±.010	CHECKED BY	DATE	ANTI-FISH HOOKING			
2 PLACES ±0.25	±.014	DMORIART	2004/10/18	TERMINAL KK.(2.50)/.100					
1 PLACE ±0.35	±---	APPROVED BY	DATE	MOLEX INCORPORATED					
ANGULAR ±---°		JDENNEHY	2004/10/19	MATERIAL NO. DOCUMENT NO. SHEET NO.					
				SEE CHART SD-4809-* 2 OF 2					
DRAFT WHERE APPLICABLE MUST REMAIN WITHIN DIMENSIONS		SIZE C		THIS DRAWING CONTAINS INFORMATION THAT IS PROPRIETARY TO MOLEX INCORPORATED AND SHOULD NOT BE USED WITHOUT WRITTEN PERMISSION					