

## Excellent Integrated System Limited

Stocking Distributor

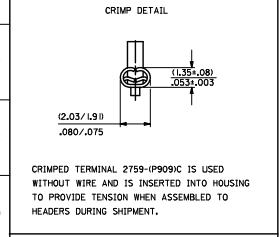
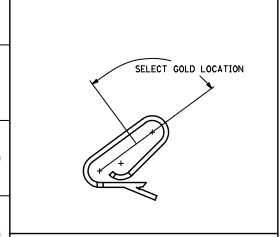
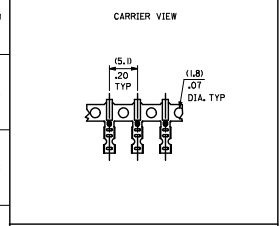
Click to view price, real time Inventory, Delivery & Lifecycle Information:

[Molex Connector Corporation](#)  
[0008510108](#)

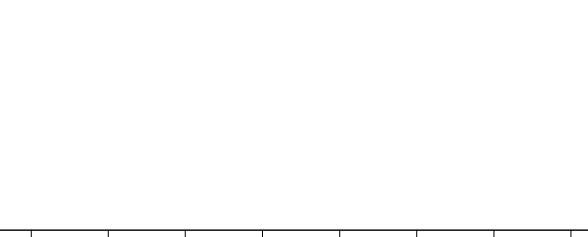
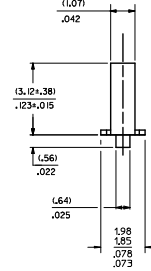
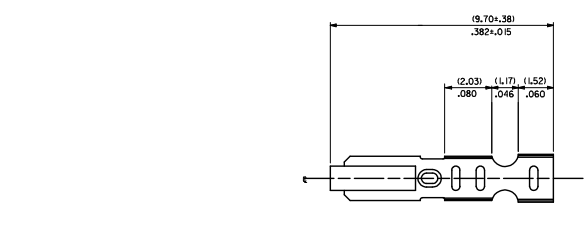
For any questions, you can email us directly:

[sales@integrated-circuit.com](mailto:sales@integrated-circuit.com)

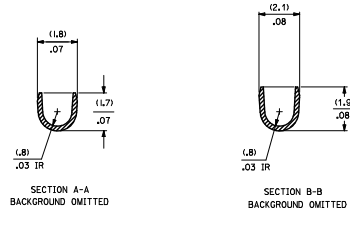
20 19 18 17 16 15 14 13 12 11 10 9 8 7 6 5 4 3 2 1



CRIMPED TERMINAL 2759-IP909IC IS USED WITHOUT WIRE AND IS INSERTED INTO HOUSING TO PROVIDE TENSION WHEN ASSEMBLED TO HEADERS DURING SHIPMENT.



- NOTES:
- MATERIAL: (0.20)/.008 THICK BRASS
  - FINISH:
    - 122 - OVERALL TIN: (0.0038)/.000150 MIN. TIN OVER (0.00078)/.000030 MIN. NICKEL
    - 154 - OVERALL TIN: (0.00254)/.000100 MIN. TIN OVER (0.00127)/.000050 MIN. NICKEL
    - P909 - OVERALL HOT TIN OP: (0.00254)/.000100 MIN.
    - 550 - SELECT GOLD: (0.00038)/.000015 MIN.
    - OVERALL GOLD FLASH: (0.00005)/.000002 MIN.
    - OVERALL NICKEL UNDERPLATE: (0.00076)/.000030 MIN.
    - 555 - SELECT GOLD: (0.00038)/.000015 MIN.
    - OVERALL NICKEL UNDERPLATE: (0.00076)/.000030
    - 558 - SELECT GOLD: (0.00076)/.000030 MIN.
    - OVERALL GOLD FLASH: (0.00005)/.000002 MIN.
    - OVERALL NICKEL UNDERPLATE: (0.00127)/.000050 MIN.
  - PRODUCT SPEED: PS-10-07
  - PACKAGING SPECIFICATION: LOOSE TERMINALS: PER PK-2759-001 CHAIN FORM TERMINALS: PER PK-2759-002
  - CRIMP IS FOR 22-30 GA WIRE WITH (1.57)/.002 DIA INSULATION MAX.
  - INSERTION FORCE OF TERMINAL INTO (2.54)/.000 CENTERLINE CONNECTOR IS 2.5 LBS. MAX
  - TERMINAL RETENTION IN HOUSING IS 28.7N / 6LBS MIN. WHEN PULLED AT THE RATE OF (25.4MM) / 1 INCH PER MINUTE.
  - DIMENSIONS GIVEN ACROSS CENTERLINES ARE SYMMETRICAL ABOUT THOSE CENTERLINES WITHIN HALF THE TOTAL TOLERANCE.
  - THIS PART CONFORMS TO CLASS B REQUIREMENTS OF COSMETIC SPECIFICATION PS-45499-002.



2759-\*\*\*\*  
FORM  
L=LOOSE  
C=LOOSE CRIMPED  
A=CHAIN, PER WINDING DETAIL 'A'  
B=CHAIN, PER WINDING DETAIL 'B'  
PLATING  
SEE NOTE 2

QUALITY SYMBOLS	GENERAL TOLERANCES (UNLESS SPECIFIED)		DIMENSION STYLE		SCALE	DESIGN UNITS	THIRD ANGLE PROJECTION		
	mm	INCH	MM/IN	DATE					
▽=0	4 PLACES ±---	±---	SAM/EC	07/28/87	TITLE	CRIMP TERMINAL	molex		
▽=0	3 PLACES ±---	±.010	CHECKED BY	DATE				SD-2759	SHEET NO. 1 OF 2
▽=0	2 PLACES ±0.25	±.014	PATEL	07/28/87					
▽=0	1 PLACE ±0.36	±---	APPROVED BY	DATE					
▽=0	0 PLACE ±---	±---	FSM/TH	2012/03/20					
ADD WINDING DETAIL		GENERAL TOLERANCES (UNLESS SPECIFIED)		DIMENSION STYLE		SCALE			
DEC NO. 10/27/04-471		mm INCH		MM/IN		INCH			
DRAWN BY PER 20/04/07		±---		DATE		TITLE			
CHKD BY PER 20/04/08		±.010		07/28/87		CRIMP TERMINAL			
APPROVED BY 20/04/07		±0.25 ±.014		DATE		22-30 GA WIRE			
MATERIAL NO.		±0.36 ±---		DATE		molex			
SEE CHART		±---		2012/03/20		SD-2759			
DRAFT WHERE APPLICABLE MUST REMAIN WITHIN DIMENSIONS		ANGULAR ±1/2°		MATERIAL NO.		DOCUMENT NO.			
SIZE D		SEE CHART		2012/03/20		SD-2759			
THIS DRAWING CONTAINS INFORMATION THAT IS PROPRIETARY TO MOLEX AND SHOULD NOT BE USED WITHOUT WRITTEN PERMISSION									

19 18 17 16 15 14 13 12 11 10 9 8 7 6 5 4 3 2 1

