

Excellent Integrated System Limited

Stocking Distributor

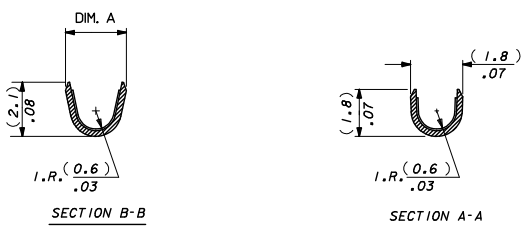
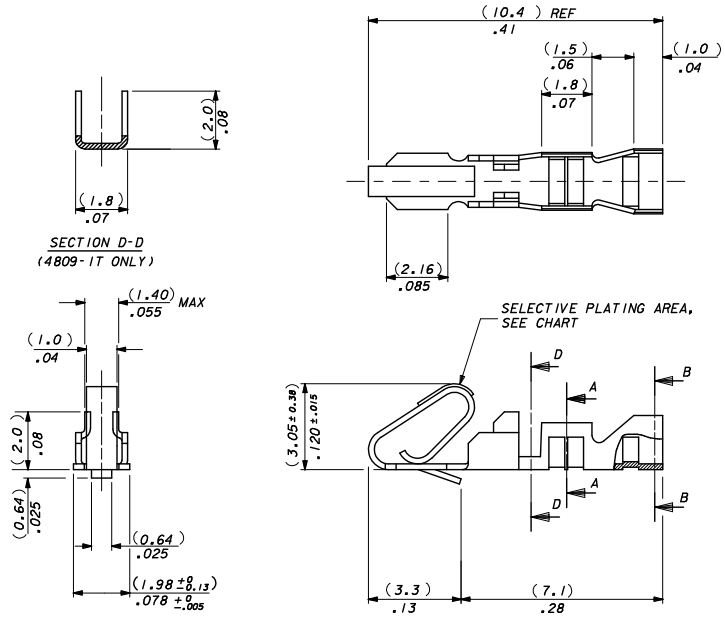
Click to view price, real time Inventory, Delivery & Lifecycle Information:

[Molex Connector Corporation](#)
[0008550112](#)

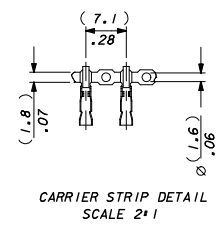
For any questions, you can email us directly:
sales@integrated-circuit.com

NOTES:

1. MATERIAL: (0.21)/.008 THICK BRASS.
2. FINISH: SEE SHEET 2.
3. THIS PART CONFORMS TO PRODUCT SPEC. 99020-0088.
4. TERMINAL MUST MEET BEND SPEC. SDES-219.
5. SUITABLE FOR 22-30 GA. WIRE, (1.57)/.062 MAX. INSULATION.
6. THIS PART CONFORMS TO CLASS B REQUIREMENTS OF COSMETIC SPECIFICATION PS-45499-002.



4809-(*) * *
 — BLANK : DIM. A = (2.1) / 1.083 REF.
 M: DIM A = (2.2) / .087 REF.
 — BLANK*CHAIN FORM TOP FEEDING REEL
 L-LOOSE FORM



SELECT GOLD AREA REC NO: UCP2013-5411 DRAWN/KTP/PER 2013/06/14 CHKD: J.BELL 2013/06/17 APPROV: S.MITH 2013/06/28	QUALITY SYMBOLS ∇=0 ∇=0 ∇=0	GENERAL TOLERANCES (UNLESS SPECIFIED)	DIMENSION STYLE MM/IN	SCALE 10:1	DESIGN UNITS METRIC	THIRD ANGLE PROJECTION
		4 PLACES ± --- ± --- 3 PLACES ± --- ± .010 2 PLACES ± 0.25 ± .014 1 PLACE ± 0.35 ± --- 0 PLACE ± ±	DRAWN BY DATE MCC 1986/07/30 CHECKED BY DATE DMORIARTY 2004/10/18 APPROVED BY DATE JOENNEHY 2004/10/19	TITLE ANTI-FISH HOOKING TERMINAL KK.(2.50)/.100	MATERIAL NO. SEE CHART	DOCUMENT NO. SD-4809-*

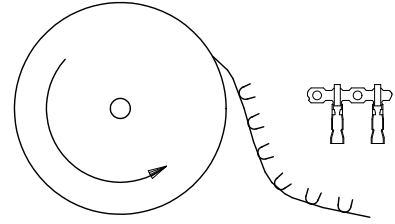
FINISH NOTES*

(550) GOLD PLATE (0.00038)/.000015 MIN. OVER (0.00076)/.000030 MIN. NICKEL

IN CONTACT AREA WITH (0.00005)/.000002 MIN. GOLD FLASH OVERALL.

(555) SELECTIVE GOLD (0.00038)/.000015 MIN. OVER (0.00076)/.000030 MIN. NICKEL IN CONTACT AREA ONLY.

(P918) HOT TIN DIP (0.00102-0.00305)/.000040-.000120

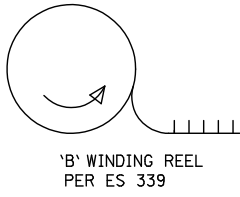
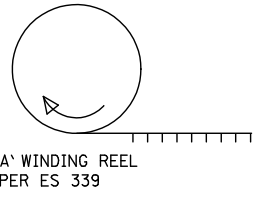


TERMINALS FEEDING FROM THE TOP OF THE REEL ARE STANDARD WOUND

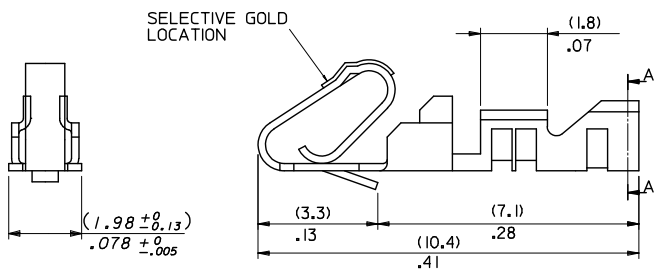
08-55-0110	4809-(555)	CHAIN	(555)	(2.45 - 1.75)/.096 - .069
08-55-0111	↑ -(555)L	LOOSE		
08-56-0120	-(550)	CHAIN	(550)	(2.45 - 1.75)/.096 - .069
08-56-0115	-(550)L	LOOSE		
08-50-0135	↓ -(P918)	CHAIN	(P918)	(2.45 - 1.75)/.096 - .069
08-50-0136	4809 - (P918) L	LOOSE		
PART No	ENG No	FORM	FINISH	DIM . A
TOP FEEDING REELS ONLY				

CORRECT PLATING EC NO: UCP2011-2151 DRAWN/STEWART 2011/01/18 CHECKED/PIPER 2011/01/26 APPROVED/SMITH 2011/02/04	QUALITY SYMBOLS ∇=0 ∇=0 ∇=0	GENERAL TOLERANCES (UNLESS SPECIFIED)		DIMENSION STYLE		SCALE	DESIGN UNITS	THIRD ANGLE PROJECTION
				MM/IN		NTS	METRIC	
		4 PLACES ± --- ± ---	DRAWN BY MCC	DATE 1986/07/30	TITLE			
		3 PLACES ± --- ± .010	CHECKED BY DMORIART	DATE 2004/10/18	ANTI-FISH HOOKING TERMINAL KK.(2.50)/.100			
2 PLACES ± 0.25 ± .014	APPROVED BY JDENNEHY	DATE 2004/10/19	MOLEX INCORPORATED					
1 PLACE ± 0.35 ± ---	ANGULAR ± ---°	MATERIAL NO.	DOCUMENT NO.			SHEET NO.		
DRAFT WHERE APPLICABLE MUST REMAIN WITHIN DIMENSIONS		SEE CHART		SD-4809-*		2 OF 2		
THIS DRAWING CONTAINS INFORMATION THAT IS PROPRIETARY TO MOLEX INCORPORATED AND SHOULD NOT BE USED WITHOUT WRITTEN PERMISSION								

10 9 8 7 6 5 4 3 2 1



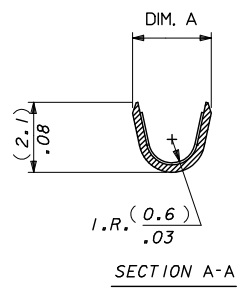
4809C-(*) * *
INSULATION CRIMP WIDTH
BLANK: DIM. A = (2.1)/.083 REF.
M: DIM. A = (2.2)/.087 REF.
FORM:
BLANK = CHAIN FORM, TOP FEEDING REEL
L = LOOSE FORM
BF = CHAIN FORM, BOTTOM FEEDING REEL



08-55-0112	4809C-(555)	CHAIN	(555)	(2.45-1.75)/.096-.069
08-50-0030	4809C-(P918)M	CHAIN	(P918)	(2.35-2.05)/.093-.081
08-50-0031	4809C-(P918)	CHAIN	(P918)	(2.45-1.75)/.096-.069
08-50-0032	4809C-(P918)L	LOOSE	(P918)	(2.45-1.75)/.096-.069
PART No	ENG No	FORM	FINISH (SEE NOTE-2)	DIM . A
'B' WINDING PER E.S. 339 (CHAIN ONLY)				

97-00-0001	4809C-(P918)BF	CHAIN	(P918)	(2.45-1.75)/.096-.069
PART No	ENG No	FORM	FINISH (SEE NOTE-2)	DIM . A
'A' WINDING PER E.S. 339				

- NOTES:
1. MATERIAL (0.20±0.01)/.008±.0004 THICK BRASS.
 2. FINISH: (555) - SELECTIVE GOLD (0.00038)//0.000015 MIN., OVERALL NICKEL (0.00076)//0.000030 MIN. (P918) - HOT TIN DIP: (0.00102-0.00305)//0.000040-0.00120
 3. THIS PART CONFORMS TO MOLEX PRODUCT SPEC. PS-99020-0088.
 4. SAME AS SD-4809-* EXCEPT WITH CAT EARS.
 5. FOR 22-30 GAUGE WIRE & (1.571)/.062 DIA. INSULATION MAX.
 6. THIS PART CONFORMS TO CLASS B REQUIREMENTS OF COSMETIC SPECIFICATION PS-45499-002.



SELECT GOLD AREA EC NO: LCP2013-5411 DRAWN BY: PPER 2013/06/14 CHECKED BY: BELL 2013/06/17 APPROVED BY: SMITH 2013/06/28	QUALITY SYMBOLS	GENERAL TOLERANCES (UNLESS SPECIFIED)	DIMENSION STYLE MM/IN	SCALE NTS	DESIGN UNITS METRIC	THIRD ANGLE PROJECTION
	▽=0	4 PLACES ± --- ± ---	DRAWN BY DATE AOD 1999/02/20	TITLE	ANTIFISH HOOKING TERMINAL KK,(2.50)/.100 WITH CAT EARS	
	▽=0	3 PLACES ± --- ± .010	CHECKED BY DATE DMOR IARTY 2004/10/18			
	▽=0	2 PLACES ± 0.25 ± .020	APPROVED BY DATE JDENNEHY 2004/10/19			
	1 PLACE ± 0.51 ± ---					
	0 PLACE ± ±		MATERIAL NO.	DOCUMENT NO.	SHEET NO.	
	ANGULAR ± --- °	DRAFT WHERE APPLICABLE MUST REMAIN WITHIN DIMENSIONS	SEE CHART	SD-4809C-****	1 OF 1	
			SIZE B	THIS DRAWING CONTAINS INFORMATION THAT IS PROPRIETARY TO MOLEX INCORPORATED AND SHOULD NOT BE USED WITHOUT WRITTEN PERMISSION		

9 8 7 6 5 4 3 2 1