

Excellent Integrated System Limited

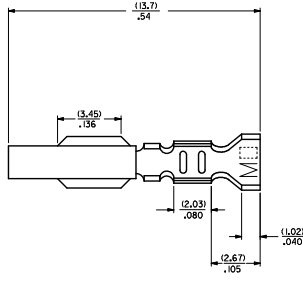
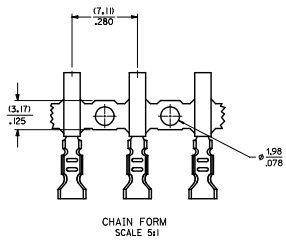
Stocking Distributor

Click to view price, real time Inventory, Delivery & Lifecycle Information:

[Molex Connector Corporation](#)
[0008580135](#)

For any questions, you can email us directly:
sales@integrated-circuit.com

20 19 18 17 16 15 14 13 12 11 10 9 8 7 6 5 4 3 2 1



LEGEND

8818-**-*(*)*

MATERIAL
(.27)/.0106 THK.
BLANK= BRASS
A= PHOS BRONZE

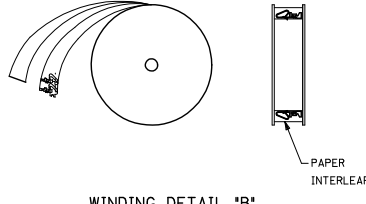
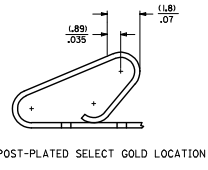
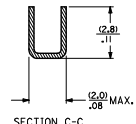
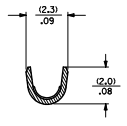
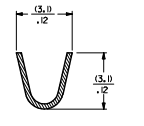
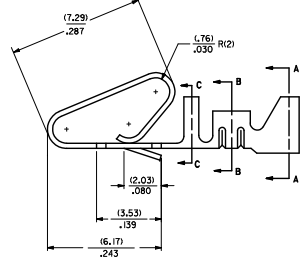
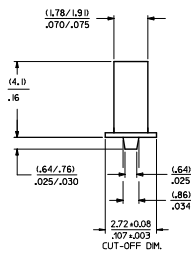
WINDING SPEC
BLANK=CHAIN, PER WINDING DETAIL "B"
L=LOOSE

PLATING
SEE NOTE 2

OPTION CODE
BLANK=AS SHOWN

EDP NO.	ENGINEERING NO.
	8818-(555)
	8818-(555)L
08-50-0008	8818-(P909)
08-50-0023	8818-(P909)L
40-01-1181	8818-(P999)
40-01-1182	8818-(P999)L
08-65-0128	8818-A(555)
08-65-0129	8818-A(555)L
08-52-0131	8818-A(P909)
08-52-0132	8818-A(P909)L
08-58-0155	8818-A(555)
08-58-0136	8818-A(555)L

- NOTES:**
1. MATERIAL: SEE LEGEND
 2. FINISH:
(P909) OVERALL HOT TIN DP: 0.00254(.00100) MIN.
(550) SELECT GOLD: 0.00038(.000015) MIN.
OVERALL GOLD FLASH: 0.00005(.000002) MIN.
OVERALL NICKEL UNDERPLATE: 0.00076(.000030) MIN.
(555) SELECT GOLD: 0.00038(.000015) MIN.
OVERALL NICKEL UNDERPLATE: 0.00076(.000030) MIN.
 3. PRODUCT SPECIFICATION: PS-08-50
 4. PACKAGING SPECIFICATION:
LOOSE TERMINALS: PER PK-2759-001
CHAIN FORM TERMINALS: NONE
 5. CRIMP ACCEPTS 18-22 GA. WIRE WITH (2.79)/.110 MAX. INSULATION DIA.
 6. DIMENSIONS GIVEN ACROSS CENTERLINES ARE SYMMETRICAL ABOUT THOSE CENTERLINES WITHIN HALF THE TOTAL TOLERANCE.
 7. TERMINAL FOR USE IN 41695 SERIES HOUSINGS.
 8. THIS PART CONFORMS TO CLASS B REQUIREMENTS OF COSMETIC SPECIFICATION PS-45499-002.



QUALITY SYMBOLS	GENERAL TOLERANCES (UNLESS SPECIFIED)		DIMENSION STYLE		SCALE	DESIGN UNITS	THIRD ANGLE PROJECTION
	mm	INCH	MM/IN	TITLE			
∇=0	4 PLACES ±---	±---	JJS	DATE 02/02/93	---	INCH	CRIMP STYLE KK TYPE, 156 CENTERS W/ANTIFISHOOK FEATURE
∇=0	3 PLACES ±---	±.010	CHECKED BY	DATE			
∇=0	2 PLACES ±0.25	±.014	PATEL	02/02/93			
∇=0	1 PLACE ±0.36	±---	APPROVED BY	DATE			
∇=0	0 PLACE ±	±	LENZ	02/02/93			
DRAFT WHERE APPLICABLE MUST REMAIN WITHIN DIMENSIONS			ANGULAR ±1/2°		MATERIAL NO. SEE CHART		DOCUMENT NO. SD-8818
THIS DRAWING CONTAINS INFORMATION THAT IS PROPRIETARY TO MOLEX INCORPORATED AND SHOULD NOT BE USED WITHOUT WRITTEN PERMISSION							SHEET NO. 1 OF 1

19 18 17 16 15 14 13 12 11 10 9 8 7 6 5 4 3 2 1