



Distributor of Molex Connector Corporation: Excellent Integrated System Limited
Datasheet of 0009482043 - Connector Receptacle 4 Position 0.156" (3.96mm) Tin Through Hole

Contact us: sales@integrated-circuit.com Website: www.integrated-circuit.com

Excellent Integrated System Limited

Stocking Distributor

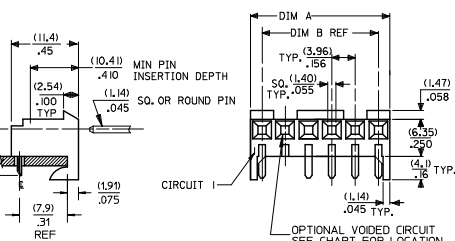
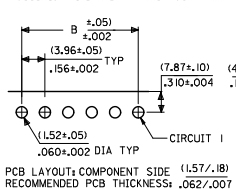
Click to view price, real time Inventory, Delivery & Lifecycle Information:

[Molex Connector Corporation](#)
[0009482043](#)

For any questions, you can email us directly:
sales@integrated-circuit.com

RIGHT ANGLE

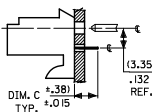
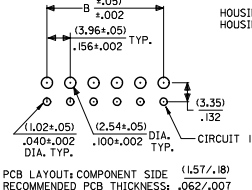
HOUSING: 41815-N-AN-** (WITH RAMP)
HOUSING: 41815-N-DN-** (WITHOUT RAMP)



DIM. B	DIM. A	NO. OF CKTS
(3.96)	(3.02±.25)	2
.156	.408±.010	2
(7.92)	(1.179±.25)	3
.312	.464±.010	3
(11.89)	(1.515±.25)	4
.468	.620±.010	4
(15.85)	(1.971±.25)	5
.624	.776±.010	5
(19.81)	(2.337±.25)	6
.780	.932±.010	6
(23.77)	(2.794±.30)	7
.936	1.088±.012	7
(27.74)	(3.169±.30)	8
1.092	1.244±.012	8
(31.70)	(3.536±.30)	9
1.248	1.400±.012	9
(35.66)	(3.902±.30)	10
1.404	1.556±.012	10
(39.62)	(4.268±.30)	11
1.560	1.712±.012	11
(43.59)	(4.634±.30)	12
1.716	1.868±.012	12
(47.55)	(5.000±.30)	13
1.872	2.024±.012	13
(51.51)	(5.366±.36)	14
2.028	2.180±.014	14
(55.47)	(5.732±.36)	15
2.184	2.336±.014	15

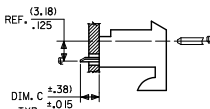
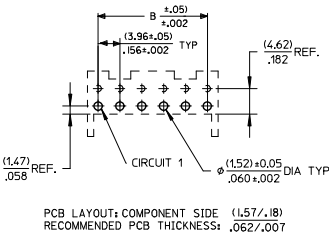
BOTTOM ENTRY

HOUSING: 41815-N-AN-** (WITH RAMP)
HOUSING: 41815-N-DN-** (WITHOUT RAMP)



TOP ENTRY

HOUSING: 41815-N-AN-** (WITH RAMP)
HOUSING: 41815-N-DN-** (WITHOUT RAMP)



NOTES:

- MATERIAL: HOUSING: POLYESTER, RATED UL 94V-0. COLOR: NATURAL (WHITE)
- FINISH:
 - (197) = OVERALL REFLOWED MATTE TIN: 0.00152/.000060 MIN OVER 0.00127/.000050 MIN NICKEL.
 - (208) = SELECT GOLD: 0.00038/.000015 MIN. SELECT TIN: 0.00254/.000100 MIN. OVERALL NICKEL UNDERPLATE: 0.00127/.000050 MIN.
 - (228) = SELECT GOLD: 0.00076/.000030 MIN. SELECT TIN: 0.00254/.000100 MIN. OVERALL NICKEL UNDERPLATE: 0.00127/.000050 MIN.
 - (909) = OVERALL TIN: 0.00254/.000100 MIN.
- PRODUCT SPECIFICATION: PS-08-50
- PACKAGING: SEE CHARTS
- FOR TOP ENTRY AND RIGHT ANGLE ASSEMBLIES WITH LOWER INSERTION FORCE USE SINGLE BEAM CONTACT, (TERMINAL NO. 4244)
- SOLDERABILITY: WHEN PARTS ARE SOLDERED AT A TEMPERATURE OF 230°C (446°F) FOR 5 SECONDS EACH SOLDERED SURFACE SHALL BE A MINIMUM OF 95% COVERED WITH A SMOOTH CONTINUOUS ADHERENT COATING. FOR ADDITIONAL INFORMATION SEE SMES-152.
- PARTS ARE STACKABLE END TO END ON (3.96)/.156 CENTERLINE.
- THIS PART CONFORMS TO CLASS B REQUIREMENTS OF COSMETIC SPEC PS-45499-002.

QUALITY SYMBOLS	GENERAL TOLERANCES (UNLESS SPECIFIED)		DIMENSION STYLE		SCALE	DESIGN UNITS	THIRD ANGLE PROJECTION
	mm	INCH	MM/IN	MM/IN			
▽=0	4 PLACES ± .25	± .010	DRAWN BY	DATE	TITLE	INCH	◎
▽=0	3 PLACES ± .125	± .005	SAMIEC	01/28/87			
▽=0	2 PLACES ± 0.25	± .015	CHECKED BY	DATE	DOCUMENT NO.	SHEET NO.	1 OF *
▽=0	1 PLACE ± 0.38	± .020	SAMIEC	01/28/87			
▽=0	0 PLACE ± .00	± .000	APPROVED BY	DATE	THIS DRAWING CONTAINS INFORMATION THAT IS PROPRIETARY TO MOLEX INCORPORATED AND SHOULD NOT BE USED WITHOUT WRITTEN PERMISSION		
			LENZ	01/28/87			
			MATERIAL NO.	SEE CHART			
			SIZE	B			