



Distributor of Molex Connector Corporation: Excellent Integrated System Limited
Datasheet of 0009482050 - Connector Receptacle 5 Position 0.156" (3.96mm) Tin Through
Hole, Right Angle

Contact us: sales@integrated-circuit.com Website: www.integrated-circuit.com

Excellent Integrated System Limited

Stocking Distributor

Click to view price, real time Inventory, Delivery & Lifecycle Information:

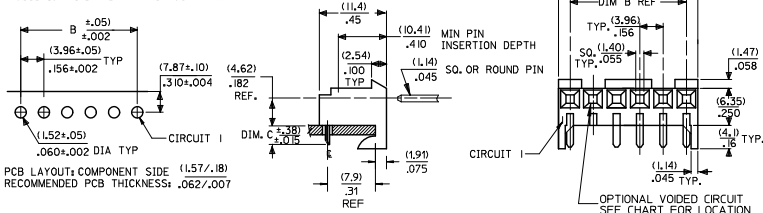
[Molex Connector Corporation](#)
[0009482050](#)

For any questions, you can email us directly:
sales@integrated-circuit.com

Contact us: sales@integrated-circuit.com Website: www.integrated-circuit.com

RIGHT ANGLE

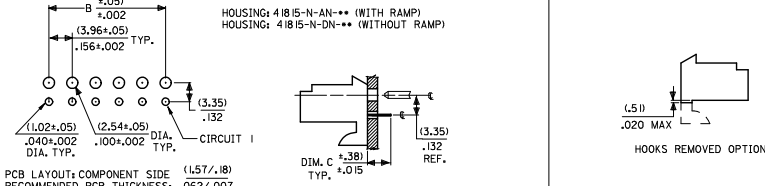
HOUSING: 41815-N-AN-**-*(WITH RAMP)
 HOUSING: 41815-N-DN-**-*(WITHOUT RAMP)



DIM. B	DIM. A	NO. OF CKTS
(3.96)	(1.02+.25)	2
.156	.408+.010	2
(7.92)	(1.179+.25)	3
.312	.464+.010	3
(11.89)	(1.159+.25)	4
.468	.620+.010	4
(15.85)	(1.197+.25)	5
.624	.776+.010	5
(19.81)	(2.367+.25)	6
.780	.932+.010	6
(23.77)	(2.764+.30)	7
.936	1.088+.012	7
(27.74)	(3.161+.30)	8
1.092	1.244+.012	8
(31.70)	(3.556+.30)	9
1.248	1.400+.012	9
(35.66)	(3.952+.30)	10
1.404	1.556+.012	10
(39.62)	(4.348+.30)	11
1.560	1.712+.012	11
(43.59)	(4.745+.30)	12
1.716	1.868+.012	12
(47.55)	(5.141+.30)	13
1.872	2.024+.012	13
(51.51)	(5.537+.36)	14
2.028	2.180+.014	14
(55.47)	(5.933+.36)	15
2.184	2.336+.014	15

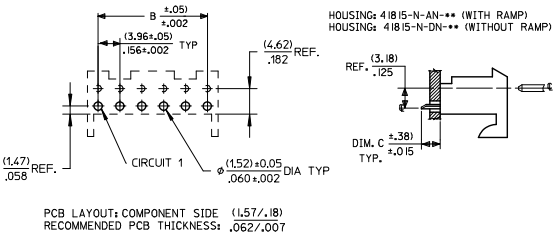
BOTTOM ENTRY

HOUSING: 41815-N-AN-**-*(WITH RAMP)
 HOUSING: 41815-N-DN-**-*(WITHOUT RAMP)



TOP ENTRY

HOUSING: 41815-N-AN-**-*(WITH RAMP)
 HOUSING: 41815-N-DN-**-*(WITHOUT RAMP)



- NOTES:
 1. MATERIAL: HOUSING: POLYESTER, RATED UL 94V-0. COLOR: NATURAL (WHITE)
 2. FINISH:
 (197) = OVERALL REFLOWED MATTE TIN: 0.00152/.000060 MIN OVER 0.00127/.000050 MIN NICKEL.
 (208) = SELECT GOLD: 0.00038/.000015 MIN. SELECT TIN: 0.00254/.000100 MIN. OVERALL NICKEL UNDERPLATE: 0.00127/.000050 MIN.
 (228) = SELECT GOLD: 0.00076/.000030 MIN. SELECT TIN: 0.00254/.000100 MIN. OVERALL NICKEL UNDERPLATE: 0.00127/.000050 MIN.
 (909) = OVERALL TIN: 0.00254/.000100 MIN.
 3. PRODUCT SPECIFICATION: PS-08-50
 4. PACKAGING: SEE CHARTS
 5. FOR TOP ENTRY AND RIGHT ANGLE ASSEMBLIES WITH LOWER INSERTION FORCE USE SINGLE BEAM CONTACT, (TERMINAL NO. 4244)
 6. SOLDERABILITY: WHEN PARTS ARE SOLDERED AT A TEMPERATURE OF 230°C (446°F) FOR 5 SECONDS EACH SOLDERED SURFACE SHALL BE A MINIMUM OF 95% COVERED WITH A SMOOTH CONTINUOUS ADHERENT COATING. FOR ADDITIONAL INFORMATION SEE SMES-152.
 7. PARTS ARE STACKABLE END TO END ON (3.96)/.156 CENTERLINE.
 8. THIS PART CONFORMS TO CLASS B REQUIREMENTS OF COSMETIC SPEC PS-45499-002.

ADD	REV	DESCRIPTION	QUALITY SYMBOLS	GENERAL TOLERANCES (UNLESS SPECIFIED)		DIMENSION STYLE		SCALE	DESIGN UNITS	THIRD ANGLE PROJECTION
				mm	INCH	MM/IN	MM/IN			
41815-0687			$\sqrt{\text{A}}=0$	4 PLACES	± .010	± .010	SAMIEC	DATE	INCH	THIRD ANGLE PROJECTION
LEC NO: UCP2015-1957			$\sqrt{\text{B}}=0$	3 PLACES	± .025	± .015	SAMIEC	DATE		
DRWING/PPER	2014/09/30		$\sqrt{\text{C}}=0$	2 PLACES	± 0.38	± .015	SAMIEC	DATE		
CHKD/KNGUEN	2014/09/30			1 PLACE	± .010	± .010	LENZ	DATE		
APPR/SMITH	2014/10/23			0 PLACE	± .010	± .010	LENZ	DATE		
ANGULAR ±1/2°				DRAFT WHERE APPLICABLE		MATERIAL NO.		DOCUMENT NO.		SHEET NO.
MUST REMAIN WITHIN DIMENSIONS				SEE CHART		THIS DRAWING CONTAINS INFORMATION THAT IS PROPRIETARY TO MOLEX INCORPORATED AND SHOULD NOT BE USED WITHOUT WRITTEN PERMISSION		SDA-41815		1 OF *