



**Distributor of Molex Connector Corporation: Excellent Integrated System Limited**  
Datasheet of 0009482069 - Connector Receptacle, Bottom Entry 6 Position 0.156" (3.96mm)  
Tin Through Hole

Contact us: [sales@integrated-circuit.com](mailto:sales@integrated-circuit.com) Website: [www.integrated-circuit.com](http://www.integrated-circuit.com)

---

## **Excellent Integrated System Limited**

Stocking Distributor

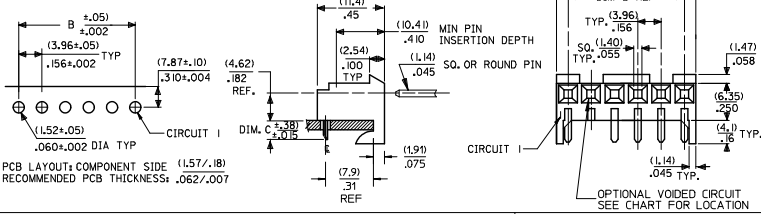
Click to view price, real time Inventory, Delivery & Lifecycle Information:

[Molex Connector Corporation](#)  
[0009482069](#)

For any questions, you can email us directly:  
[sales@integrated-circuit.com](mailto:sales@integrated-circuit.com)

RIGHT ANGLE

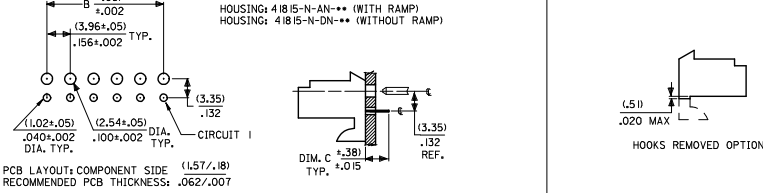
HOUSING: 41815-N-AN-\*\* (WITH RAMP)  
 HOUSING: 41815-N-DN-\*\* (WITHOUT RAMP)



DIM. B	DIM. A	NO. OF CKTS
(3.96)	(1.02±.25)	2
.156	.408±.010	2
(7.92)	(1.179±.25)	3
.312	.464±.010	3
(11.89)	(1.15±.25)	4
.468	.620±.010	4
(15.85)	(1.97±.25)	5
.624	.776±.010	5
(19.81)	(2.347±.25)	6
.780	.932±.010	6
(23.77)	(2.764±.30)	7
.936	1.088±.012	7
(27.74)	(3.169±.30)	8
1.092	1.244±.012	8
(31.70)	(3.556±.30)	9
1.248	1.400±.012	9
(35.66)	(3.952±.30)	10
1.404	1.556±.012	10
(39.62)	(4.348±.30)	11
1.560	1.712±.012	11
(43.59)	(4.745±.30)	12
1.716	1.868±.012	12
(47.55)	(5.141±.30)	13
1.872	2.024±.012	13
(51.51)	(5.537±.36)	14
2.028	2.180±.014	14
(55.47)	(5.933±.36)	15
2.184	2.336±.014	15

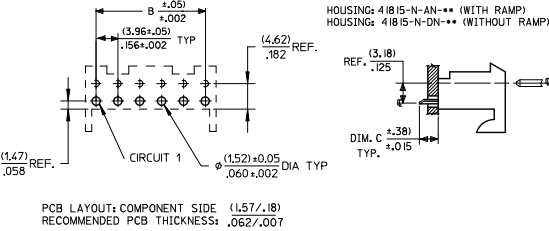
BOTTOM ENTRY

HOUSING: 41815-N-AN-\*\* (WITH RAMP)  
 HOUSING: 41815-N-DN-\*\* (WITHOUT RAMP)



TOP ENTRY

HOUSING: 41815-N-AN-\*\* (WITH RAMP)  
 HOUSING: 41815-N-DN-\*\* (WITHOUT RAMP)



- NOTES:  
 1. MATERIAL: HOUSING: POLYESTER, RATED UL 94V-0. COLOR: NATURAL (WHITE)  
 2. FINISH:  
 (197) = OVERALL REFLOWED MATTE TIN: 0.00152/.000060 MIN OVER 0.00127/.000050 MIN NICKEL.  
 (208) = SELECT GOLD: 0.00038/.000015 MIN. SELECT TIN: 0.00254/.000100 MIN. OVERALL NICKEL UNDERPLATE: 0.00127/.000050 MIN.  
 (228) = SELECT GOLD: 0.00076/.000030 MIN. SELECT TIN: 0.00254/.000100 MIN. OVERALL NICKEL UNDERPLATE: 0.00127/.000050 MIN.  
 (909) = OVERALL TIN: 0.00254/.000100 MIN.  
 3. PRODUCT SPECIFICATION: PS-08-50  
 4. PACKAGING: SEE CHARTS  
 5. FOR TOP ENTRY AND RIGHT ANGLE ASSEMBLIES WITH LOWER INSERTION FORCE USE SINGLE BEAM CONTACT, (TERMINAL NO. 4244)  
 6. SOLDERABILITY: WHEN PARTS ARE SOLDERED AT A TEMPERATURE OF 230°C (446°F) FOR 5 SECONDS EACH SOLDERED SURFACE SHALL BE A MINIMUM OF 95% COVERED WITH A SMOOTH CONTINUOUS ADHERENT COATING. FOR ADDITIONAL INFORMATION SEE SMES-152.  
 7. PARTS ARE STACKABLE END TO END ON (3.96)/.156 CENTERLINE.  
 8. THIS PART CONFORMS TO CLASS B REQUIREMENTS OF COSMETIC SPEC PS-45499-002.

ADD 41815-0687 EC NO: UCP2015-9357 DRAWN: PPER 2014/09/30 CHKD: NGUYEN 2014/09/30 APPROV: SMITH 2014/10/23	QUALITY SYMBOLS √=0 √=0 √=0	GENERAL TOLERANCES (UNLESS SPECIFIED)		DIMENSION STYLE		SCALE --	DESIGN UNITS INCH	THIRD ANGLE PROJECTION
		mm	INCH	MM/IN	DATE			
AN3	REV	4 PLACES ± .25	± .010	DRAWN BY SAMIEC	DATE 01/28/87	TITLE KK 156 HOUSING PCB 41815 SERIES	molex	SHEET NO. 1 OF *
		3 PLACES ± .25	± .015	CHECKED BY SAMIEC	DATE 01/28/87			
		2 PLACES ± .25	± .015	APPROVED BY LENZ	DATE 01/28/87			
		1 PLACE ± .38	± .---	MATERIAL NO. SEE CHART	DOCUMENT NO. SDA-41815			
		ANGULAR ±1/2° DRAFT WHERE APPLICABLE MUST REMAIN WITHIN DIMENSIONS		SIZE B		THIS DRAWING CONTAINS INFORMATION THAT IS PROPRIETARY TO MOLEX INCORPORATED AND SHOULD NOT BE USED WITHOUT WRITTEN PERMISSION		