



Distributor of Molex Connector Corporation: Excellent Integrated System Limited
Datasheet of 0009482140 - Connector Receptacle 14 Position 0.156" (3.96mm) Tin Through
Hole, Right Angle

Contact us: sales@integrated-circuit.com Website: www.integrated-circuit.com

Excellent Integrated System Limited

Stocking Distributor

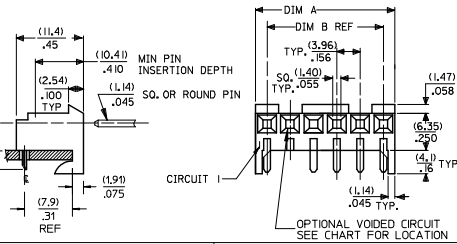
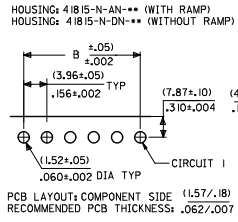
Click to view price, real time Inventory, Delivery & Lifecycle Information:

[Molex Connector Corporation](#)
[0009482140](#)

For any questions, you can email us directly:
sales@integrated-circuit.com

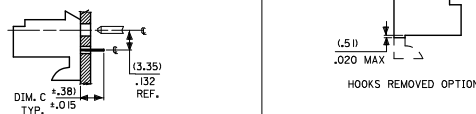
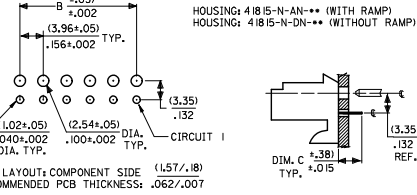
Contact us: sales@integrated-circuit.com Website: www.integrated-circuit.com

RIGHT ANGLE

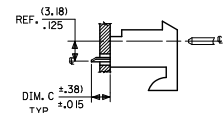
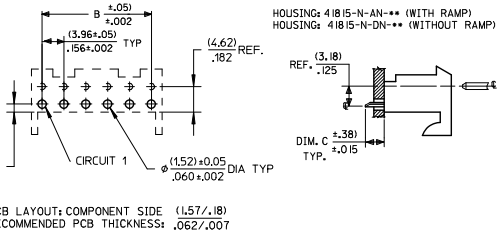


DIM. B	DIM. A	NO. OF CKTS
(3.96)	(1.02+.25)	2
.156	.408+.010	2
(7.92)	(1.179+.25)	3
.312	.464+.010	3
(11.89)	(1.179+.25)	4
.468	.620+.010	4
(15.85)	(1.171+.25)	5
.624	.776+.010	5
(19.81)	(2.347+.25)	6
.780	.932+.010	6
(23.77)	(2.764+.30)	7
.936	1.088+.012	7
(27.74)	(3.169+.30)	8
1.092	1.244+.012	8
(31.70)	(3.556+.30)	9
1.248	1.400+.012	9
(35.66)	(3.952+.30)	10
1.404	1.556+.012	10
(39.62)	(4.348+.30)	11
1.560	1.712+.012	11
(43.59)	(4.745+.30)	12
1.716	1.868+.012	12
(47.55)	(5.141+.30)	13
1.872	2.024+.012	13
(51.51)	(5.537+.36)	14
2.028	2.180+.014	14
(55.47)	(5.933+.36)	15
2.184	2.336+.014	15

BOTTOM ENTRY



TOP ENTRY



- NOTES:
 1. MATERIAL: HOUSING: POLYESTER, RATED UL 94V-0, COLOR: NATURAL (WHITE)
 2. FINISH:
 (197) = OVERALL REFLOWED MATTE TIN: 0.00152/.000060 MIN OVER 0.00127/.000050 MIN NICKEL.
 (208) = SELECT GOLD: 0.00038/.000015 MIN.
 SELECT TIN: 0.00254/.000100 MIN.
 OVERALL NICKEL UNDERPLATE: 0.00127/.000050 MIN.
 (228) = SELECT GOLD: 0.00076/.000030 MIN.
 SELECT TIN: 0.00254/.000100 MIN.
 OVERALL NICKEL UNDERPLATE: 0.00127/.000050 MIN.
 (909) = OVERALL TIN: 0.00254/.000100 MIN.
 3. PRODUCT SPECIFICATION: PS-08-50
 4. PACKAGING: SEE CHARTS
 5. FOR TOP ENTRY AND RIGHT ANGLE ASSEMBLIES WITH LOWER INSERTION FORCE USE SINGLE BEAM CONTACT, (TERMINAL NO. 4244)
 6. SOLDERABILITY: WHEN PARTS ARE SOLDERED AT A TEMPERATURE OF 230°C (446°F) FOR 5 SECONDS EACH SOLDERED SURFACE SHALL BE A MINIMUM OF 95% COVERED WITH A SMOOTH CONTINUOUS ADHERENT COATING. FOR ADDITIONAL INFORMATION SEE SMES-152.
 7. PARTS ARE STACKABLE END TO END ON (3.96)/.156 CENTERLINE.
 8. THIS PART CONFORMS TO CLASS B REQUIREMENTS OF COSMETIC SPEC PS-45499-002.

ADD: 41815-0687 EC NO: UCP2015-1357 DRWING PPR: 2014/09/30 CHK DRWING: 2014/09/30 APPR: SJI/TH: 2014/10/23	QUALITY SYMBOLS $\nabla=0$ $\nabla=0$ $\nabla=0$	GENERAL TOLERANCES (UNLESS SPECIFIED)		DIMENSION STYLE		SCALE	DESIGN UNITS	THIRD ANGLE PROJECTION		
			mm	INCH	MM/IN	--	INCH			
		4 PLACES ±	---	±---	DRAWN BY	DATE	TITLE		KK 156 HOUSING PCB 41815 SERIES molex SDA-41815 SHEET NO. 1 OF *	
		3 PLACES ±	---	±.010	CHECKED BY	DATE				
		2 PLACES ±	0.25	±.015	SAMIEC	01/28/87				
		1 PLACE ±	0.38	±---	APPROVED BY	DATE				
0 PLACE ±		±	LENZ	01/28/87						
ANGULAR ±1/2° DRAFT WHERE APPLICABLE MUST REMAIN WITHIN DIMENSIONS		MATERIAL NO.		DOCUMENT NO.						
		SEE CHART		THIS DRAWING CONTAINS INFORMATION THAT IS PROPRIETARY TO MOLEX INCORPORATED AND SHOULD NOT BE USED WITHOUT WRITTEN PERMISSION						