



**Distributor of Molex Connector Corporation: Excellent Integrated System Limited**  
Datasheet of 0009483156 - Connector Receptacle 15 Position 0.156" (3.96mm) Gold Through Hole

Contact us: [sales@integrated-circuit.com](mailto:sales@integrated-circuit.com) Website: [www.integrated-circuit.com](http://www.integrated-circuit.com)

---

## **Excellent Integrated System Limited**

Stocking Distributor

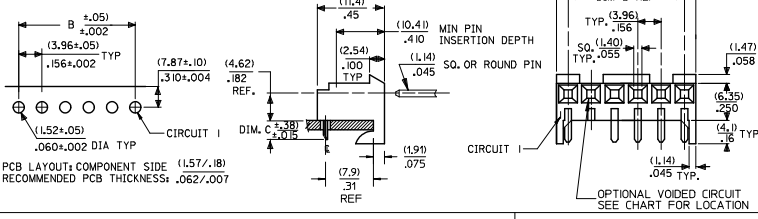
Click to view price, real time Inventory, Delivery & Lifecycle Information:

[Molex Connector Corporation](#)  
[0009483156](#)

For any questions, you can email us directly:  
[sales@integrated-circuit.com](mailto:sales@integrated-circuit.com)

**RIGHT ANGLE**

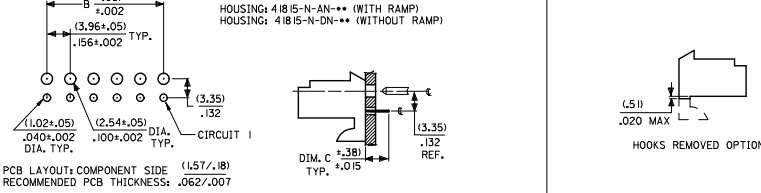
HOUSING: 41815-N-AN-\*\* (WITH RAMP)  
HOUSING: 41815-N-DN-\*\* (WITHOUT RAMP)



DIM. B	DIM. A	NO. OF CKTS
(3.96)	(3.82+.25)	2
.156	.108+.010	2
(7.92)	(1.79+.25)	3
.312	.464+.010	3
(11.89)	(5.75+.25)	4
.468	.620+.010	4
(15.85)	(9.71+.25)	5
.624	.776+.010	5
(19.81)	(13.67+.25)	6
.780	.932+.010	6
(23.77)	(17.64+.30)	7
.936	1.088+.012	7
(27.74)	(21.61+.25)	8
1.092	1.244+.012	8
(31.70)	(25.58+.30)	9
1.248	1.400+.012	9
(35.66)	(29.52+.30)	10
1.404	1.556+.012	10
(39.62)	(33.48+.30)	11
1.560	1.712+.012	11
(43.59)	(37.45+.30)	12
1.716	1.868+.012	12
(47.55)	(41.41+.30)	13
1.872	2.024+.012	13
(51.51)	(45.37+.36)	14
2.028	2.180+.014	14
(55.47)	(49.33+.36)	15
2.184	2.336+.014	15

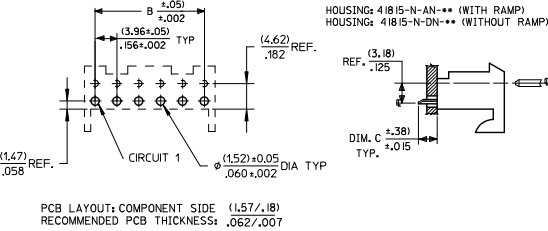
**BOTTOM ENTRY**

HOUSING: 41815-N-AN-\*\* (WITH RAMP)  
HOUSING: 41815-N-DN-\*\* (WITHOUT RAMP)



**TOP ENTRY**

HOUSING: 41815-N-AN-\*\* (WITH RAMP)  
HOUSING: 41815-N-DN-\*\* (WITHOUT RAMP)



- NOTES:  
1. MATERIAL: HOUSING: POLYESTER, RATED UL 94V-0. COLOR: NATURAL (WHITE)  
2. FINISH:  
(197) = OVERALL REFLOWED MATTE TIN: 0.00152/.000060 MIN OVER 0.00127/.000050 MIN NICKEL.  
(208) = SELECT GOLD: 0.00038/.000015 MIN.  
SELECT TIN: 0.00254/.000100 MIN.  
OVERALL NICKEL UNDERPLATE: 0.00127/.000050 MIN.  
(228) = SELECT GOLD: 0.00076/.000030 MIN.  
SELECT TIN: 0.00254/.000100 MIN.  
OVERALL NICKEL UNDERPLATE: 0.00127/.000050 MIN.  
(909) = OVERALL TIN: 0.00254/.000100 MIN.  
3. PRODUCT SPECIFICATION: PS-08-50  
4. PACKAGING: SEE CHARTS  
5. FOR TOP ENTRY AND RIGHT ANGLE ASSEMBLIES WITH LOWER INSERTION FORCE USE SINGLE BEAM CONTACT, (TERMINAL NO. 4244)  
6. SOLDERABILITY: WHEN PARTS ARE SOLDERED AT A TEMPERATURE OF 230°C (446°F) FOR 5 SECONDS EACH SOLDERED SURFACE SHALL BE A MINIMUM OF 95% COVERED WITH A SMOOTH CONTINUOUS ADHERENT COATING. FOR ADDITIONAL INFORMATION SEE SMES-152.  
7. PARTS ARE STACKABLE END TO END ON (3.96)/.156 CENTERLINE.  
8. THIS PART CONFORMS TO CLASS B REQUIREMENTS OF COSMETIC SPEC PS-45499-002.

ADD 41815-0687 EC NO: UCP2015-1957 DRAWN: PPER 2014/09/30 CHKD: NGUYEN 2014/09/30 APPR: SHTH 2014/10/23	QUALITY SYMBOLS ▽=0 ▽=0 ▽=0	GENERAL TOLERANCES (UNLESS SPECIFIED)		DIMENSION STYLE		SCALE	DESIGN UNITS	THIRD ANGLE PROJECTION	
		mm	INCH	MM/IN	MM/IN			INCH	INCH
AN3		4 PLACES	± .010	± .010	DRAWN BY	DATE	TITLE KK 156 HOUSING PCB 41815 SERIES	<b>molex</b>	
		3 PLACES	± .010	± .010	CHECKED BY	DATE			
		2 PLACES	± 0.25	± .015	SAMIEC	01/28/87			
		1 PLACE	± 0.38	± .015	APPROVED BY	DATE			
		0 PLACE	± .010	± .010	LENZ	01/28/87	MATERIAL NO.	DOCUMENT NO.	SHEET NO.
		ANGULAR ±1/2° DRAFT WHERE APPLICABLE MUST REMAIN WITHIN DIMENSIONS		SEE CHART		SDA-41815		1 OF *	
		THIS DRAWING CONTAINS INFORMATION THAT IS PROPRIETARY TO MOLEX INCORPORATED AND SHOULD NOT BE USED WITHOUT WRITTEN PERMISSION							