



Distributor of Molex Connector Corporation: Excellent Integrated System Limited
Datasheet of 0009485036 - Connector Receptacle, Bottom Entry 3 Position 0.156" (3.96mm)
Gold Through Hole

Contact us: sales@integrated-circuit.com Website: www.integrated-circuit.com

Excellent Integrated System Limited

Stocking Distributor

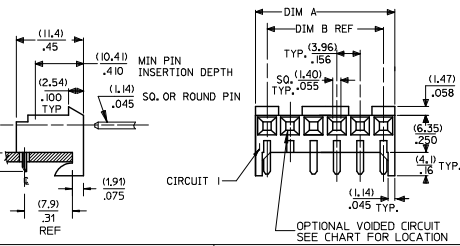
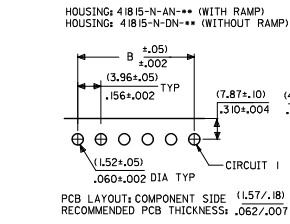
Click to view price, real time Inventory, Delivery & Lifecycle Information:

[Molex Connector Corporation](#)
[0009485036](#)

For any questions, you can email us directly:
sales@integrated-circuit.com

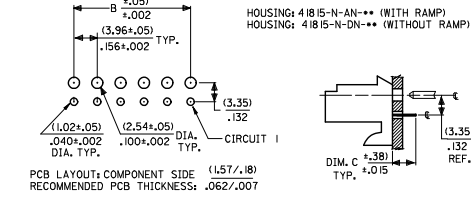
Contact us: sales@integrated-circuit.com Website: www.integrated-circuit.com

RIGHT ANGLE

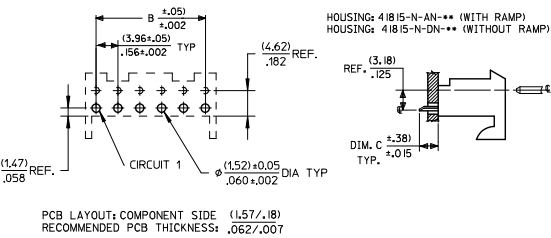


DIM. B	DIM. A	NO. OF CKTS
(3.96)	$(13.02 \pm .25)$	2
$.156$	$(.08 \pm .010)$	2
(7.92)	$(11.79 \pm .25)$	3
$.312$	$(.464 \pm .010)$	3
(11.89)	$(15.75 \pm .25)$	4
$.468$	$(.620 \pm .010)$	4
(15.85)	$(19.71 \pm .25)$	5
$.624$	$(.776 \pm .010)$	5
(19.81)	$(23.67 \pm .25)$	6
$.780$	$(.932 \pm .010)$	6
(23.77)	$(27.64 \pm .30)$	7
$.936$	$(1.088 \pm .012)$	7
(27.74)	$(31.69 \pm .30)$	8
1.092	$(1.244 \pm .012)$	8
(31.70)	$(35.56 \pm .30)$	9
1.248	$(1.400 \pm .012)$	9
(35.66)	$(39.52 \pm .30)$	10
1.404	$(1.556 \pm .012)$	10
(39.62)	$(43.48 \pm .30)$	11
1.560	$(1.712 \pm .012)$	11
(43.59)	$(47.45 \pm .30)$	12
1.716	$(1.868 \pm .012)$	12
(47.55)	$(51.41 \pm .30)$	13
1.872	$(2.024 \pm .012)$	13
(51.51)	$(55.37 \pm .36)$	14
2.028	$(2.180 \pm .014)$	14
(55.47)	$(59.33 \pm .36)$	15
2.184	$(2.336 \pm .014)$	15

BOTTOM ENTRY



TOP ENTRY



- NOTES:
 1. MATERIAL: HOUSING: POLYESTER, RATED UL 94V-0, COLOR: NATURAL (WHITE)
 2. FINISH:
 (197) = OVERALL REFLOWED MATTE TIN: 0.00152/.000060 MIN OVER 0.00127/.000050 MIN NICKEL.
 (208) = SELECT GOLD: 0.00038/.000015 MIN.
 SELECT TIN: 0.00254/.000100 MIN.
 OVERALL NICKEL UNDERPLATE: 0.00127/.000050 MIN.
 (228) = SELECT GOLD: 0.00076/.000030 MIN.
 SELECT TIN: 0.00254/.000100 MIN.
 OVERALL NICKEL UNDERPLATE: 0.00127/.000050 MIN.
 (909) = OVERALL TIN: 0.00254/.000100 MIN.
 3. PRODUCT SPECIFICATION: PS-08-50
 4. PACKAGING: SEE CHARTS
 5. FOR TOP ENTRY AND RIGHT ANGLE ASSEMBLIES WITH LOWER INSERTION FORCE USE SINGLE BEAM CONTACT, (TERMINAL NO. 4244)
 6. SOLDERABILITY: WHEN PARTS ARE SOLDERED AT A TEMPERATURE OF 230°C (446°F) FOR 5 SECONDS EACH SOLDERED SURFACE SHALL BE A MINIMUM OF 95% COVERED WITH A SMOOTH CONTINUOUS ADHERENT COATING. FOR ADDITIONAL INFORMATION SEE SMES-152.
 7. PARTS ARE STACKABLE END TO END ON (3.96)/.156 CENTERLINE.
 8. THIS PART CONFORMS TO CLASS B REQUIREMENTS OF COSMETIC SPEC PS-45499-002.

ADD: 41815-0687 EC NO: IJCP2015-0357 DR: NIK/PPER 2014/09/30 CH: KONGUEN 2014/09/30 APPR: S/11H 2014/10/23	DESCRIPTION AN3 REV	QUALITY SYMBOLS	GENERAL TOLERANCES (UNLESS SPECIFIED)	DIMENSION STYLE	SCALE	DESIGN UNITS	THIRD ANGLE PROJECTION	
			mm	MM/IN	--	INCH		
		$\nabla=0$	4 PLACES \pm --- \pm ---	DRAWN BY	DATE	TITLE	KK 156 HOUSING PCB 41815 SERIES	
		$\nabla=0$	3 PLACES \pm --- \pm .010	CHECKED BY	DATE	molex		
		$\nabla=0$	2 PLACES \pm 0.25 \pm .015	SAMIEC	01/28/87			
	1 PLACE \pm 0.38 \pm ---	APPROVED BY	DATE	MATERIAL NO.	DOCUMENT NO.	SHEET NO.		
	0 PLACE \pm \pm	LENZ	01/28/87	SEE CHART	SDA-41815	1 OF *		
ANGULAR $\pm 1/2^\circ$			THIS DRAWING CONTAINS INFORMATION THAT IS PROPRIETARY TO MOLEX INCORPORATED AND SHOULD NOT BE USED WITHOUT WRITTEN PERMISSION					
DRAFT WHERE APPLICABLE MUST REMAIN WITHIN DIMENSIONS								