

## Excellent Integrated System Limited

Stocking Distributor

Click to view price, real time Inventory, Delivery & Lifecycle Information:

[Molex Connector Corporation](#)  
[0009652089](#)

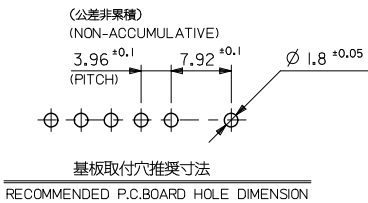
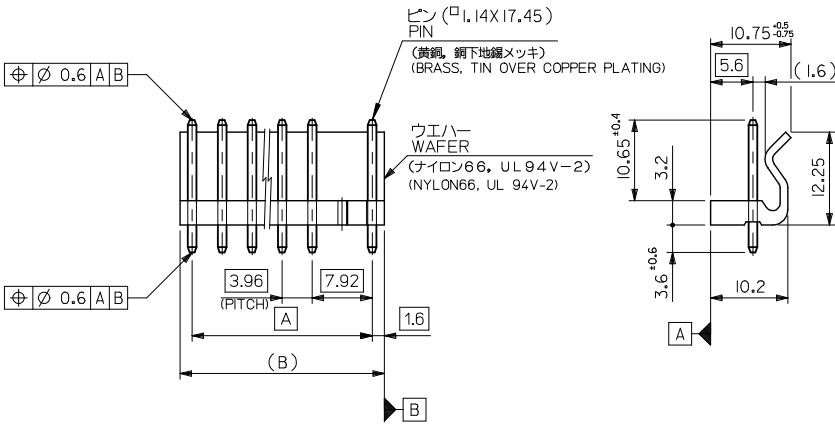
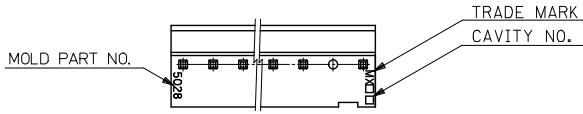
For any questions, you can email us directly:

[sales@integrated-circuit.com](mailto:sales@integrated-circuit.com)

10 9 8 7 6 5 4 3 2 1

注記  
NOTE

1. ウエハーのそりは、長さ25.4に対して0.24MAX.  
CAMBER MUST BE 0.24 MAX. PER 25.4.



基板取付穴推奨寸法  
RECOMMENDED P.C.BOARD HOLE DIMENSION

50.72	47.52	09-65-2129	5277-12A	12
42.8	39.6	-2109	-10A	10
38.84	35.64	-2099	-09A	9
34.88	31.68	-2089	-08A	8
30.92	27.72	-2079	-07A	7
26.96	23.76	-2069	-06A	6
23	19.8	-2059	-05A	5
19.04	15.84	-2049	-04A	4
15.08	11.88	-2039	-03A	3
11.12	7.92	09-65-2029	5277-02A	2
B	A	オーダー番号 (EDP NO.) ORDER NO. (EDP NO.)	ENG. NO.	極致 CKTS.

REVISED EC NO. J2016-0865 DRAWN: MIYABE 2016/01/19 CHKD: KASAKAWA 2016/02/18 APPR: IKANEKO 2016/03/18	GENERAL TOLERANCES (UNLESS SPECIFIED)		DIMENSION STYLE MM ONLY		SCALE 2:1	DESIGN UNITS METRIC	THIRD ANGLE PROJECTION
	10 UNDER	± 0.2	DRAWN BY H. HIRAMOTO	DATE '88/09/29	TITLE KK 3.96/7.92 WAFER ASSY WITH LOCK		
	10 OVER 30 UNDER	± 0.25	CHECKED BY M. FUKUSHIMA	DATE '91/06/26	MATERIAL NO. MOLEX INCORPORATED		
	30 OVER	± 0.3	APPROVED BY M. ENOMOTO	DATE '91/06/26	DOCUMENT NO. SD-5277-001		
ANGULAR ±3 °		DRAFT WHERE APPLICABLE MUST REMAIN WITHIN DIMENSIONS		SEE TABLE		SHEET NO. 1 OF 1	
SIZE A3				THIS DRAWING CONTAINS INFORMATION THAT IS PROPRIETARY TO MOLEX INCORPORATED AND SHOULD NOT BE USED WITHOUT WRITTEN PERMISSION			