

Excellent Integrated System Limited

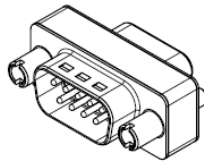
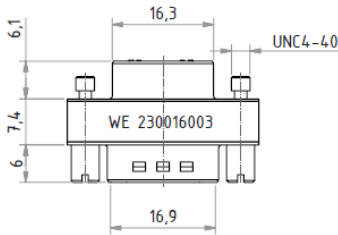
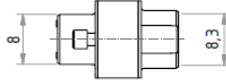
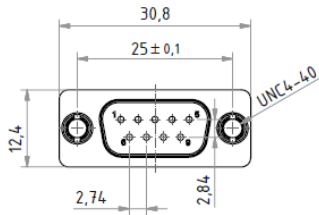
Stocking Distributor

Click to view price, real time Inventory, Delivery & Lifecycle Information:

[Wurth Electronics Inc](#)
[230016003](#)

For any questions, you can email us directly:

sales@integrated-circuit.com



Capacitor value 1000 pF

Technical Characteristics

Materials:

Insulator: Thermoplastic UL94 V-0 black
Contact: Copper alloy
Contact finish: 0,2u Au over nickel
Shell: steel tin plated

Characteristics:

Working voltage: 100 V
Current rating: 5A
Contact resistance: max. 10 MOHM
Insulation resistance: > 1 GOHM
Temperature range: -55° - 125°C

General tolerances				
tolerances	± 0,1	± 0,2	± 0,2	± 0,3
size (mm)	> 0,5 up to 3	> 3 up to 6	> 6 up to 30	> 30 up to 120

						DESCRIPTION DSubFilter D-Sub Filter Adapter	
		Date		Name		Scale	
		09-08-31		Jelisarow		1:1	
		Drawn		Checked		Position	
				Würth Elektronik eSOS GmbH & Co KG D-74638 Waldenburg Max-Eyth-Strasse 1		Drawing- No. 230016003 SIZE A4	
REV	FILE	DATE	BY	EDV NO	230016003.dft		System: Solid Edge V20