

## Excellent Integrated System Limited

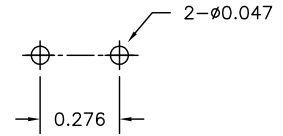
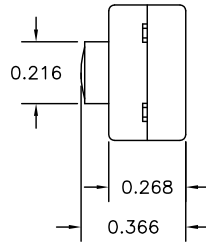
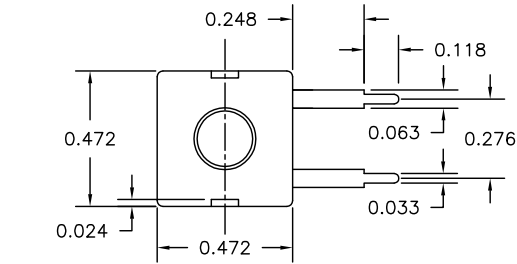
Stocking Distributor

Click to view price, real time Inventory, Delivery & Lifecycle Information:

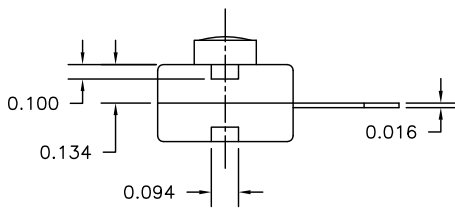
[Judco Manufacturing, Inc.](#)  
[50-0014-00](#)

For any questions, you can email us directly:  
[sales@integrated-circuit.com](mailto:sales@integrated-circuit.com)

LTR	EN	DESCRIPTION	APPR	BY	DATE
A	-	INITIAL RELEASE	RB	DC	08-11-03
A1	-	CHG'D ELECTRICAL RATING: FROM 300mA TO 500mA	MT	NH	06-14-12
A2	-	REMOVED UL ON THE ELECTRICAL DESCRIPTION	MT	DC	08-27-12




RECOMMENDED MOUNTING PATTERN



JUDCO INVENTORY NO. 50-0014-00  
 SWITCH TYPE: PUSH BUTTON, SPST, ON-OFF  
 ELECTRICAL RATING: 12 VDC, 500mA

CUSTOMER: \_\_\_\_\_  
 APPROVED BY: \_\_\_\_\_  
 DATE: \_\_\_\_\_

DIMENSIONS IN INCHES DIMENSIONS ARE REFERENCE		 HARBOR CITY CALIFORNIA TITLE J-977 MINI FLAT PAK W/STRAIGHT TERMINALS	
DRAWN: DC	08-11-03	DWG. NO.	1415-439
APPR: KJ	08-11-03	SHEET	1 OF 1
ENG: IS	06-14-12		
1415U439A2.DWG			

This document embodies a product, component, and/or design proprietary to JUDCO MANUFACTURING INC., and which is protected either as a trade secret, by U.S. Patent, or by copyright. It may not be used in any way without written express consent of JUDCO MANUFACTURING INC.