

Excellent Integrated System Limited

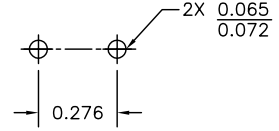
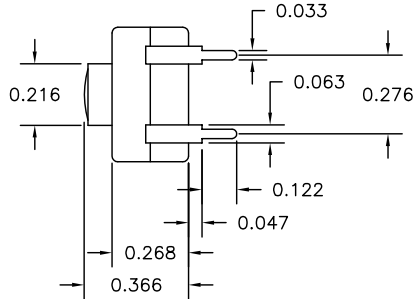
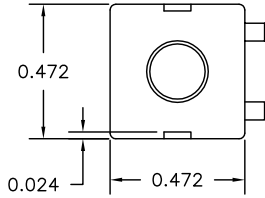
Stocking Distributor

Click to view price, real time Inventory, Delivery & Lifecycle Information:

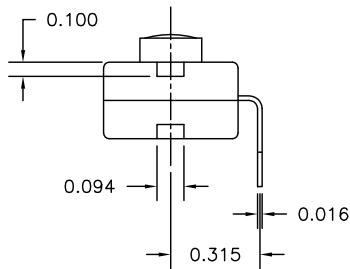
[Judco Manufacturing, Inc.](#)
[50-0015-00](#)

For any questions, you can email us directly:
sales@integrated-circuit.com

LTR	EN	DESCRIPTION	APPR	BY	DATE
A	-	INITIAL RELEASE	RB	DC	07-21-03
A1	-	CHG'D ELECTRICAL RATING FROM 300mA TO 500mA	MT	NH	06-14-12
A2	-	REMOVED UL ON THE ELECTRICAL DESCRIPTION	MT	DC	08-27-12




RECOMMENDED MOUNTING PATTERN



JUDCO INVENTORY NO. 50-0015-00
SWITCH TYPE: PUSH BUTTON, SPST, ON-OFF
ELECTRICAL RATING: 12 VDC, 500mA

CUSTOMER: _____
APPROVED BY: _____
DATE: _____

This document embodies a product, component, and/or design proprietary to JUDCO MANUFACTURING INC., and which is protected either as a trade secret, by U.S. Patent, or by copyright. It may not be used in any way without written express consent of JUDCO MANUFACTURING INC.

DIMENSIONS IN INCHES DIMENSIONS ARE REFERENCE		 HARBOR CITY CALIFORNIA	
DRAWN: DC 02-27-03		TITLE J-977 MINI FLAT PAK W/BENT TERMINALS	
APPR: KJ 07-21-03		DWG. NO. 1415-351	
ENG: IS 06-14-12		SHEET 1 OF 1	
1415U351A2.DWG			