

## **Excellent Integrated System Limited**

Stocking Distributor

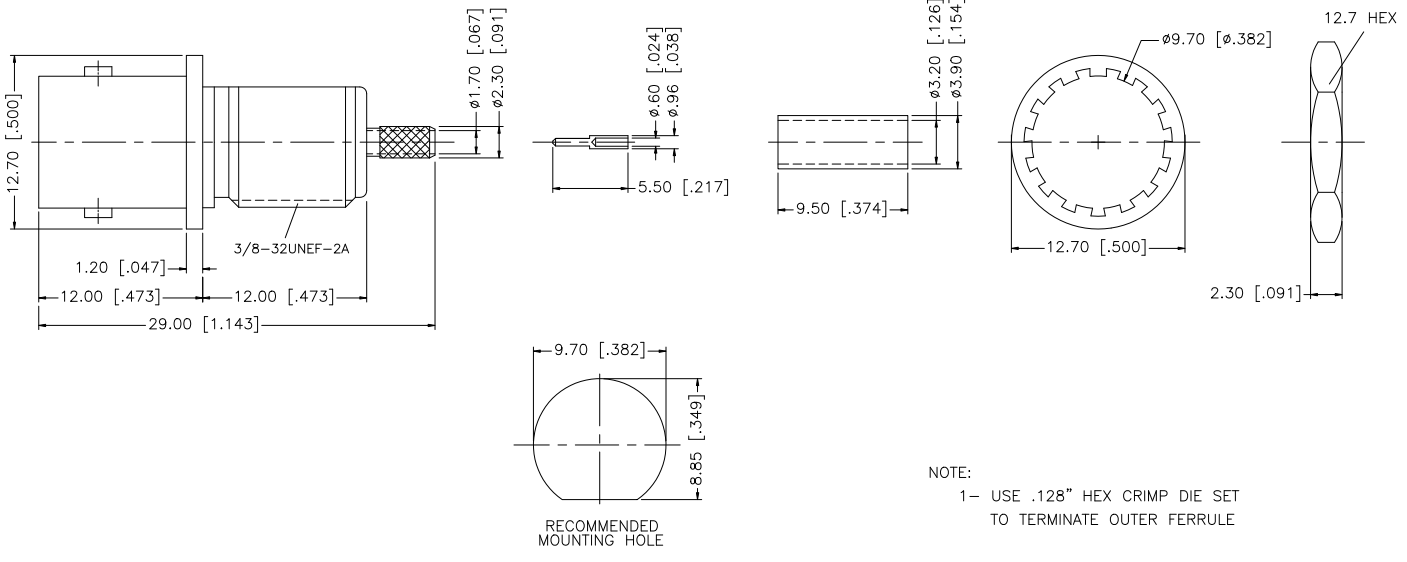
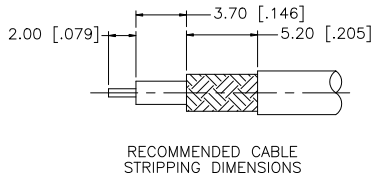
Click to view price, real time Inventory, Delivery & Lifecycle Information:

[Amphenol RF](#)  
[112654](#)

For any questions, you can email us directly:

[sales@integrated-circuit.com](mailto:sales@integrated-circuit.com)

REV.	DATE	DESCRIPTION
A	07/11/00	REVISE CRIMP NOTE
B	07/31/02	REVISE CRIMP NOTE
C	08/09/05	REVISE CABLE DESCRIPTION TO 179/U
D	01/28/08	REMOVE REFERENCE TO SPECIFIC CRIMP TOOL MANUFACTURE IN NOTES



NOTE:  
 1- USE .128" HEX CRIMP DIE SET TO TERMINATE OUTER FERRULE

DESCRIPTION	MATERIAL	FINISH	QTY	APPROVALS	DATE	<h1 style="color: blue; margin: 0;">Amphenol Connex</h1>	
8							<b>PART DESCRIPTION</b> BNC BULKHEAD CRIMP JACK (front mount) (FOR 179/U 75ohm CABLE)
7						<b>PART NO.</b> 112654	
6	HEX NUT	BRASS	NICKEL	1	DRAWN G.R.S.		01/28/08
5	LOCK WASHER	BRASS	NICKEL	1	CHECKED		<b>REV.</b> D <b>SIZE</b> A <b>SCALE</b> NA
4	FERRULE	BRASS	NICKEL	1	ISSUED		
3	CONTACT PIN	BER. COPPER	GOLD	1	SHEET 1 OF 1		
2	INSULATOR	TEFLON	NATURAL	1			
1	BODY	BRASS	NICKEL	1			
<small>UNLESS OTHERWISE SPECIFIED DIMENSIONS ARE IN MILLIMETERS. DIMENSIONS IN [ ] ARE IN INCHES AND FOR CUSTOMER REFERENCE ONLY.</small> <small>UNLESS OTHERWISE SPECIFIED TOLERANCES FOR MILLIMETERS ARE:</small> 0.5 - 8mm ± 0.20mm 8 - 30mm ± 0.40mm 30 - 120mm ± 0.50mm <small>UNLESS OTHERWISE SPECIFIED TOLERANCES FOR INCHES ARE:</small> .020 - .315 = ± 0.007" .315 - 1.180 = ± 0.015" 1.180 - 4.724 = ± 0.020" DO NOT SCALE DRAWING				<small>CAD FILE</small> C:/112/112654.DWG			