

Excellent Integrated System Limited

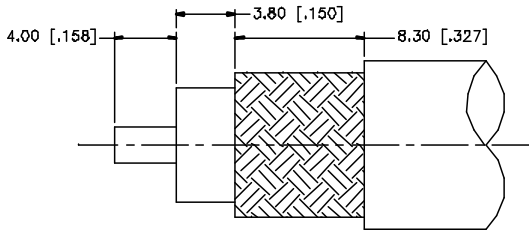
Stocking Distributor

Click to view price, real time Inventory, Delivery & Lifecycle Information:

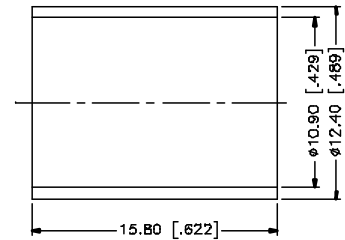
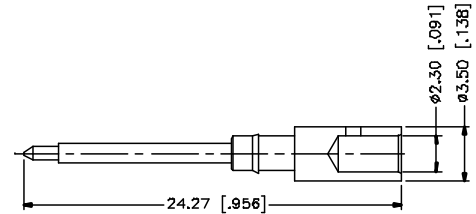
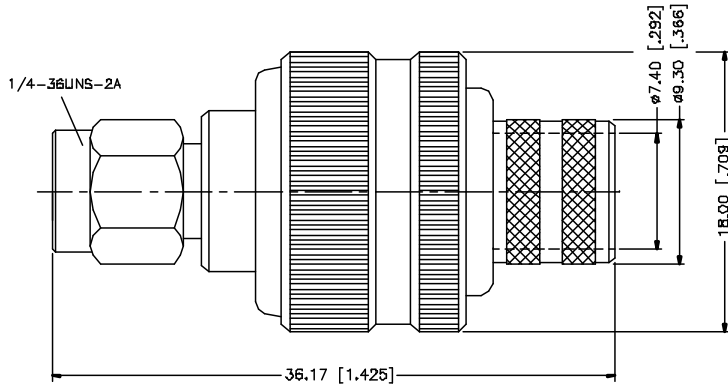
[Amphenol RF](#)
[132368](#)

For any questions, you can email us directly:
sales@integrated-circuit.com

REV.	DATE	DESCRIPTION
NC	03/27/05	INITIAL RELEASE



RECOMMENDED
CABLE STRIPPING DIM'S



- NOTE:
1. CRIMPED FERRULE
HEX CRIMP SIZE .429"
 2. CRIMPED CONTACT PIN
HEX CRIMP SIZE .118"

QTY	DESCRIPTION	MATERIAL	FINISH	QTY	APPROVALS	DATE	<h2 style="color: blue; margin: 0;">Amphenol Connex</h2>
1	BDDY	BRASS	GOLD	1	DRAWN G.R.S.	03/27/05	
2	INSULATOR	TEFLON	NATURAL	1	CHECKED		PART NO. 132368
3	CONTACT PIN	BRASS	GOLD	1	ISSUED		
4	FERRULE	COPPER	GOLD	1	SHEET 1 OF 1		DWG. NO. 132368.DWG
8							
7							SIZE A
5							SCALE NA
<small>UNLESS OTHERWISE SPECIFIED DIMENSIONS ARE IN MILLIMETERS. DIMENSIONS IN [] ARE IN INCHES AND FOR OUTSIDE REQUIREMENTS ONLY.</small> <small>UNLESS OTHERWISE SPECIFIED TOLERANCES FOR MILLIMETERS ARE:</small> 0.6 - 30mm ± 0.20mm 30 - 120mm ± 0.50mm <small>UNLESS OTHERWISE SPECIFIED TOLERANCES FOR INCHES ARE:</small> .020 - .315 = ± 0.007" .315 - 1.180 = ± 0.015" 1.180 - 4.724 = ± 0.020" DO NOT SCALE DRAWING					CAD FILE C:/132/132368.DWG		