

Excellent Integrated System Limited

Stocking Distributor

Click to view price, real time Inventory, Delivery & Lifecycle Information:

[CTS Electronic Components](#)

[4202-050LF](#)

For any questions, you can email us directly:

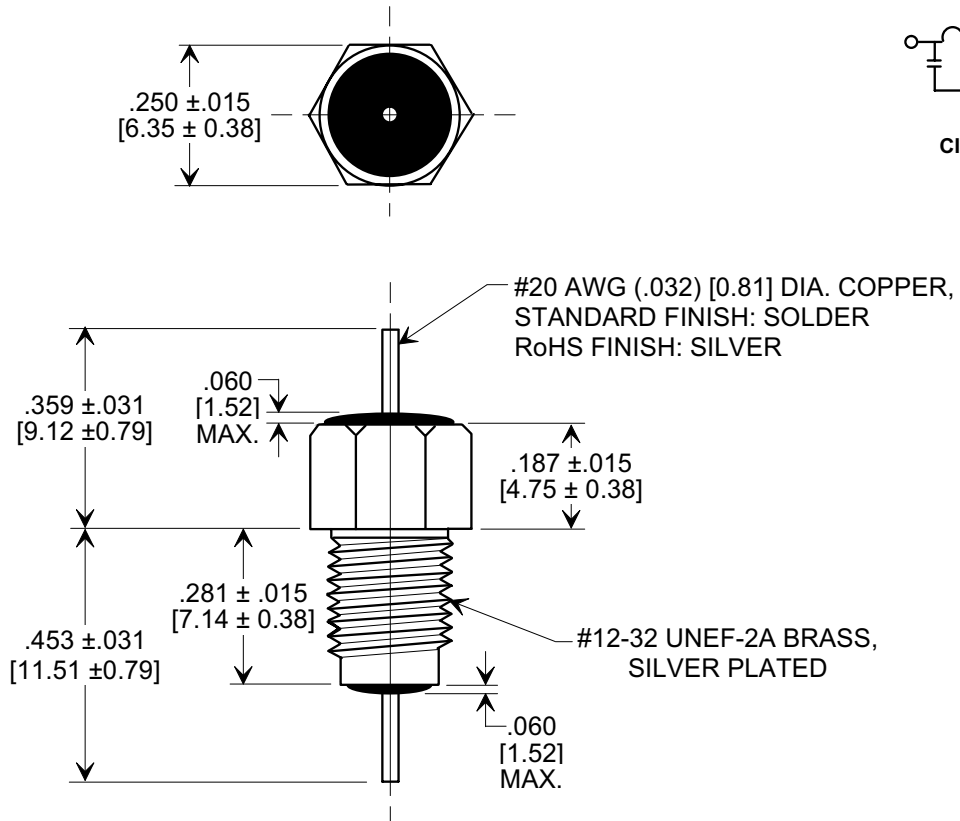
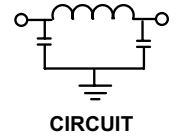
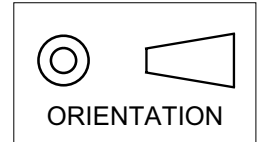
sales@integrated-circuit.com

MARKETING SALES DRAWING

DIMENSIONS IN INCHES - DO NOT SCALE THIS DRAWING

DIMENSIONS IN METRIC - []

Electrical Testing
 per Tusonix standard
 test plans and Mil-Std-202
 Test Methods.



NOTES:

- SUPPLIED WITH SILVER PLATED HEX NUT AND LOCK WASHER.
- TUSONIX STANDARD PART NUMBER: 4202-050.
 TUSONIX RoHS COMPLIANT PART NUMBER: 4202-050 LF.
 CUSTOMER MUST SPECIFY STANDARD OR RoHS PART NUMBER WHEN ORDERING.
- PART MARKING: TRADEMARK AND VARIATION NUMBER ON HEX FLATS.
 STANDARD PART: BLACK INK. RoHS PART: GREEN INK.

MIN. CAP. (pF)	WORKING VOLTAGE (WVdc)		CURRENT (Idc)	DWV (VDC)	I.R. MIN. @ 100 VDC	MINIMUM NO LOAD INSERTION LOSS (dB) AT 25°C PER MIL-STD -220			
	85°C	125°C				10 MHz	100 MHz	1 GHz	10 GHz
5000	200	100	10 A	400	10 G	20	65	70	70

X-2015 Rev-0

REVISION RECORD Original Release C.O. 1653 CURRENT UNIT "A" ADDED. L.E. 8-20-85 2595 RDN TO COMP FMT & ADDED METRIC. 02-12-02 20020213-3-10 ADDED NOTES 2 & 3. ADDED LEAD & BUSHING FINISH. S.M. 05-19-05 20050503-6-25	0	--TOLERANCES-- Unless Otherwise Specified DECIMAL ± ANGLES ± TUSONIX TUCSON, ARIZONA	Title BUSHING STYLE EMI FILTER	
	Drawn S.M. 02-12-02 Scale 3 X			
	Approved T.C. 02-12-02			
	A		4202-050	